

Historic, Archive Document

Do not assume content reflects current scientific knowledge, policies, or practices.

62,73

Barr's

NURSERY CATALOG

1921

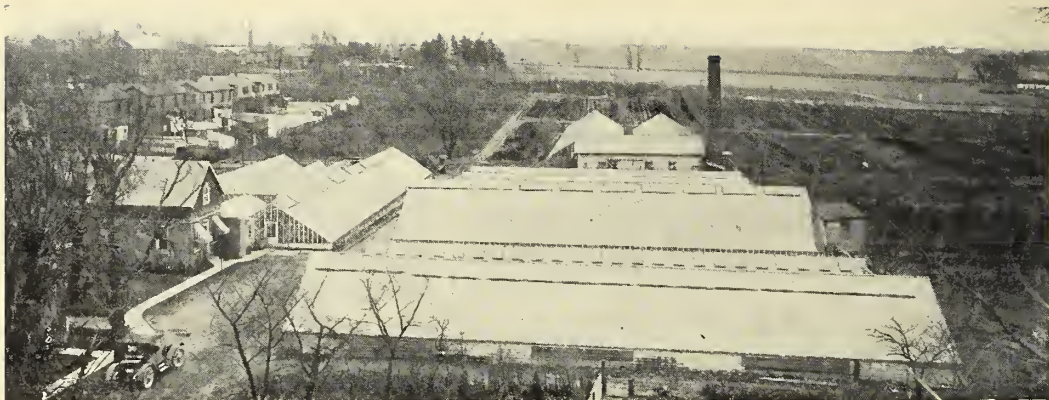


*Ornamental
Trees, Shrubs
Hardy
Perennials, etc.*

B. F. Barr & Co.

KEYSTONE NURSERIES

LANGASTER, PA.



Bird's-eye view of our Nursery Office Shipping Department and Greenhouses
940 Columbia Ave., "West Lincoln Highway."

GENERAL DIRECTIONS

IMPORTANT TO PURCHASERS—READ CAREFULLY

Our nursery office, greenhouses, and showgrounds are located at 940 Columbia Avenue (now known as Lincoln Highway), Lancaster. Take either Columbia or Marietta avenue cars. Only ten minutes' ride from the square in the central part of town.

On the Marietta turnpike, our Nurseries are situated, two miles west of Lancaster. Store, 116 N. Queen Street.

Lancaster is centrally placed among many of Pennsylvania's prosperous cities—Philadelphia is 59 miles away; Harrisburg, 38 miles; York, 26 miles, and Reading, 32 miles.

SHIPPING FACILITIES.—The Philadelphia & Reading and Pennsylvania Railroads enter Lancaster, and their lines radiate in all directions. By means of the Pennsylvania Railroad we are placed in quick and easy communication with all eastern cities, and with all through lines to the West. The American Express and Adams Express Companies cover most points.

FORWARDING.—Growing plants and small packages of roots will invariably be sent by express, unless otherwise instructed. The regular-sized plants which we send out are too large to be sent by mail. The rate under which plants and bulbs travel makes this the quickest and most satisfactory way to ship. Large orders of Plants, Trees, etc., may be sent safely by freight. Unless specially instructed, we will exercise our best judgment as to mode of shipment. When desired, small plants and roots can be sent by Parcel Post. A remittance of 10% should be added to the order to cover postage. Customers who desire us to prepay express charges may remit enough to cover, and any surplus will be returned; or, if preferred, extra plants will be sent to make up the difference.

TERMS.—Cash, unless otherwise specially arranged. Orders from unknown correspondents, without satisfactory commercial rating, should be accompanied with a remittance to cover the order, or with satisfactory reference.

REMITTANCE should be made by Post-Office or Express Money Order, Registered Letter, or Bank Draft. Postage stamps may be sent for amounts under \$1.00.

QUALITY OF STOCK.—We propose to send out only first-class stock, true to name. No substitutions will be made, unless by request, or by permission.

PRICES.—The prices in this catalogue are net, and will not be deviated from, as it is our aim that all customers shall be treated alike.

GUARANTEE.—No risk to you. We guarantee every plant from our Nursery, and give new ones for those that do not grow satisfactorily. The cost of planting and transportation is borne by the purchaser.

Prices in this Catalog supersede previous catalog quotations and are subject to change without notice, owing to conditions not within our control.

While we exercise the greatest care to have all the Trees, Shrubs, and Plants, etc., genuine and believe them to be true to label and hold ourselves prepared to refund the purchase price or replace on proper proof all that prove untrue, we do not give any warranty, express or implied; and in case of any error on our part, it is mutually agreed between the purchaser and ourselves that we shall not at any time be held responsible for a greater amount than the original price of the goods.

B. F. BARR & CO.
Keystone Nurseries
Lancaster, Pa.

INTRODUCTION



LANCASTER COUNTY, PENNSYLVANIA, the world's richest agricultural County, has been famous for generations as the home of extraordinary agricultural products. Plant life of all kinds develops to the highest state of perfection in the rich soil of Lancaster County.

In the midst of this wonderfully rich land lies the KEYSTONE NURSERIES of B. F. BARR & COMPANY. These Nurseries are built about an ideal that makes for real true service.

With the knowledge obtained by long experience, with ample area, and with trained help, we stand in a position to view the possibilities and opportunities to serve the garden lovers of this country. It is our earnest desire to furnish the patrons of the BARR NURSERIES the ultimate in everything for the garden.

As a service to our friends and customers, we have established a Landscape Division whose business it is to make easy for you to acquire that dream of every home owner, a beautiful, artistic surrounding that makes life a pleasure. We are glad, through our Landscape Division, to furnish ideas, plans and full information for planting the gardens of new homes and the re-establishing of older homes that have not had exactly the proper attention.

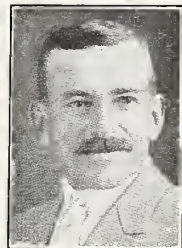
Here at Lancaster, at the famous KEYSTONE NURSERIES, will be found a wide range of garden plants—from herbaceous perennials to ornamental evergreens, deciduous trees, greenhouse plants, seed and nursery stock of every description—specially selected with a view to making the home surroundings ideal.

Let us help you to realize that dream garden of which you have thought so much but may not have realized because you have never known how easy it is to establish a real garden.

B. F. BARR & COMPANY,
KEYSTONE NURSERIES, Lancaster, Pa.



P. W. DE HERTOGH
Landscape Architect,
Manager Landscape Division.



HARRY HAVERSTICK
Landscape Division.



B. F. BARR
Founder and
General Manager.



JOHN SCHMUCKLI
Shipping Division.



LOUIS BENNER
Production Division.

The pictures of the principal executives are shown in the idea that others probably feel as we do. We like to know the men we do business with. The personal element helps to understanding, making it more pleasant and easy to do business with men you know.

I hope you will find in this book some new inspiration, and assuring you we will do all in our power to merit a continuance of your confidence and valued patronage.

B. F. BARR.

BARR'S

Landscape Architectural Service

To you who wish an effective setting for your **home**, whether it be bungalow and lawn, or mansion and estate, all of which have their special conditions and requirements that can only be successfully co-ordinated by one well trained in the principles of landscape design and possessing a knowledge of plant material. Practical and trained architects have charge of this department and will advise you as to how you can secure the utmost beauty from your grounds, regardless of size or where located.

Put your planting problems up to us. BARR'S ARCHITECTURAL SERVICE will suggest varieties best adapted to your purpose, their arrangements and cost. All of this will be done in a non-technical way, and revised if necessary until the buyer is assured of the result he wishes.

With the use of our **Information Blank**, which will be mailed you on request, and when filled out by you and returned to us we will draw a plan for you. This can be done by mail and without visiting your property, except in complicated plantings or large estates, parks, cemeteries, school-yards, etc., when one of our architects will call on you personally by appointment and view the grounds you wish improved and beautified, before making a plan.

A fee is charged for making plans to cover their cost, but you are given credit for the amount when your order is placed for the required stock. This is done to prevent curious persons from asking for plans with little or no intention of making use of them.

For letter aid, no charge is made or obligation placed upon the correspondent, nor is there a charge made for consultation, no matter where you are located. Let us advise you as to how you can secure the utmost beauty and delight from your out-door living room.



DECIDUOUS TREES

Government Forest Service men place a value on a row of Cottonwood Trees a mile long, forty years old, at three thousand two hundred dollars, for their lumber value, in addition to their shade value, representing even larger figures.

Had the row been Norway Maple, American Elm, Oaks, Ash, or Beech, their value would have been even larger. Equally valuable results can be secured from similar planting in almost any neighborhood.

Not every one wishes to plant a row of trees a mile long nor wait fifty years for the cash value referred to, but these figures establish the fact that money put in shade trees is wisely invested.

If you were looking for a home, one with large Trees, Shrubby, Hedges and Flowers would appeal to you most, wouldn't it? You often hear a friend say, "I wish I could buy that home," because of the fine trees and shade. Their value cannot be measured, but it's there just the same.

You like to be out of doors in the summer, say on Sunday afternoon and other such times. You are not comfortable in the sun. Where will you get more comfort than under the shade of a tree? Just the place to entertain your friends or to read a book or paper.

The middle of your yard should not be planted. Leave an open space for grass, but plant trees around the borders in groups, irregularly, inside a privet hedge. Groups of Shrubby help to make the ground more homelike, to say nothing of the charm of their flowers. How often do we see a fine grove of trees, but something is lacking? Shrubby will correct this at very small cost. Arrange your trees so as not to cut off your best views, but try to plant, if at all possible, one or more tall growing trees on the southwest side of the house to shade the house from the afternoon sun. They seem to absorb the heat, and in the hottest summer day it is always fairly cool beneath their protection.

NORWAY MAPLES

Acer platanoides. *Norway Maple.* Typical Maple leaves, large and bright green, fading to gold in the fall. Trunk and branches are sturdy and strong, lending an effect of ruggedness. Growth is fast. Branches and foliage are thick and compact. The tree is large, towering 50 ft. high when fully grown. Splendid trees, most beautiful and desirable. For lining the side of lanes and roads, or a lawn; to protect the house from sun and weather; for shade, for beauty and satisfaction, and for real, permanent worth in all landscape planting, there are no other trees in its class. Norway Maples are at home in the mountains, but will thrive at any elevation and in nearly any soil to be found in this country. Each.

8 to 10 ft., 1¼ to 1½ in. cal.....	\$1.75
10 to 12 ft., 1½ to 1¾ in. cal.....	2.00
14 to 16 ft., 2 to 2½ in. cal.....	2.50
14 to 16 ft., 2½ to 3 in. cal.....	4.00
Larger specimens	\$8.00 to 25.00

A. platanoides Schwedleri. *Schwedler's Purple Norway Maple.* Leaves open deep purple in Spring, changing later to dark olive-green as the season advances. Otherwise, similar to the Norway. Each. Ten.

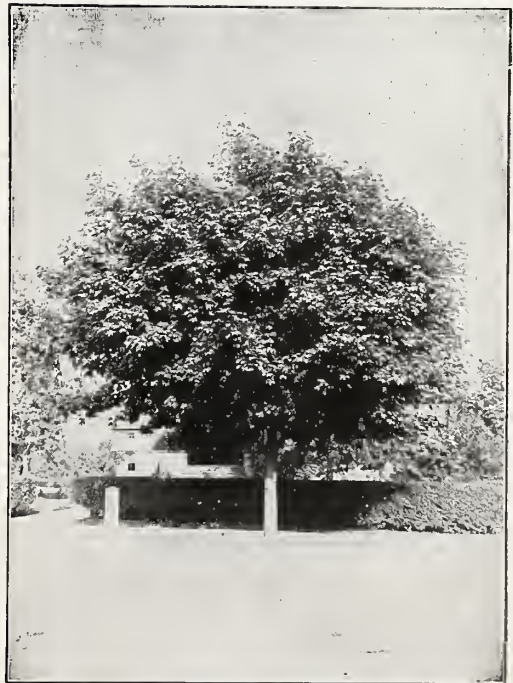
8 to 10 ft., 1¼ to 1½ in. cal.....	\$3.00	\$25.00
10 to 12 ft., 1½ to 2 in. cal.....	4.00	35.00
12 to 14 ft., 2 to 2½ in. cal.....	5.00	45.00

A. rubrum. *Red, or Scarlet Maple.* Attractive for its excellent habit, earliness of the scarlet flowers and bright red seed pods in late spring. The deep green foliage turns to scarlet and orange in the fall. Each. Ten.

6 to 8 ft.....	\$2.00	\$17.50
8 to 10 ft.....	3.00	21.00
10 to 12 ft., 2½ in. cal.....	4.00	—

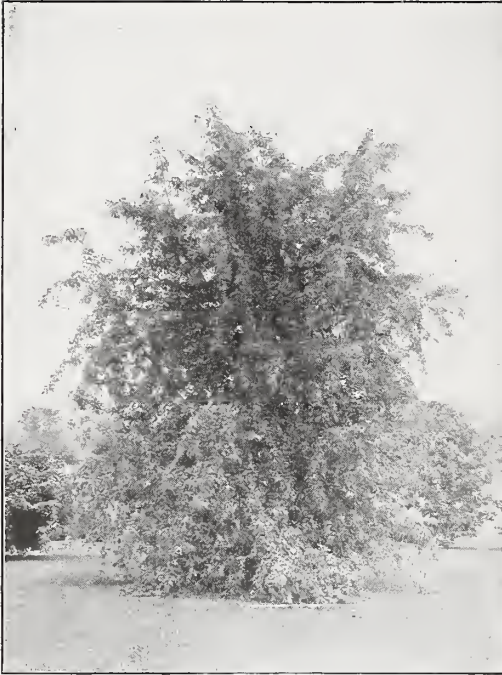
A. saccharinum. *Sugar, or Rock Maple.* A tall, handsome, moderately rapid-growing tree. Autumn foliage, gold and scarlet. A most beautiful tree. Each. Ten.

10 to 12 ft., 1¼ to 1½ in. cal.....	\$2.25	\$18.00
12 to 14 ft., 1½ to 2 in. cal.....	3.25	30.00



NORWAY MAPLE.

One of our best shade trees. Easily transplanted and thrives under all conditions.



CUT-LEAVED WEEPING BIRCH.

- A. *dasycarpum* Wieri. *Wier's Cut-Leaf Silver Maple*. This very graceful tree has a slightly drooping habit and finely divided leaves. A very rapid grower. Young, thrifty trees.
 - 8 to 10 ft., 1¼ to 1½ in. cal.....\$2.25
 - 10 to 12 ft., 1½ to 1¾ in. cal..... 3.00
- A. *spicatum*. *Mountain Maple*. A shrubby tree with light green foliage, bearing in summer bright red seed pods, valuable in undergrowth.
 - Each. Ten.
 - 5 to 6 ft.....\$2.00 \$17.50
- A. *dasycarpum*. *Silver Maple*. Of an irregular, rounded form; foliage light green, silvery beneath; grows fast, very hardy, and thrives in any soil.
 - Each.
 - 8 to 10 ft.....\$2.00
 - 10 to 12 ft..... 2.50

JAPANESE MAPLES

These are valuable as permanent beds, or they may be grouped on the lawn or mixed in the shrubbery planting. American grown stock, which we offer, has been found far superior to imported plants.

- Acer polymorphum atropurpureum*. *Blood Leaf Japan Maple*. Greatly used because of the rich, crimson color of its star-shaped foliage. Develops into a bushy specimen as broad as tall. The most beautiful colored hardy foliage plant. Sometimes grown in tree form.
 - Each.
 - 2 to 2½ ft.....\$3.50
 - 2½ to 3 ft..... 5.00
 - 3 to 3½ ft..... 6.00
 - Specimens\$10.00 to 25.00
- A. *polymorphum*. *Green Fern-Leaved Japan Maple*. An attractive variety; makes a broad specimen, with branches sweeping the ground. The fern-like foliage is a bright, rich green.

Ideal for specimen use on lawn, terrace, and at bends of walks. Sometimes grafted on standards to produce tree forms.

- Each.
- 2½ to 3 ft., 2½ ft. wide.....\$5.00

- A. *polymorphum atropurpureum dissectum*. *Red Fern-Leaved Japan Maple*. In habit the same as above except that the leaves are red, retaining their color nearly all summer.
 - Each.
 - 1½ to 2 ft., 1½ ft. wide.....\$3.50
 - 2 to 2½ ft., 2 ft. wide..... 5.00
 - 2 to 2½ ft..... 6.00
- A. *aureum*. *Golden-Leaved Maple*. Foliage softly shaded in gold; very dwarf.
 - Each.
 - 2½ to 3 ft.....\$5.00

HORSE CHESTNUT • Aesculus

The showy flower clusters, unique seeds, and broad, pleasing, shade-giving leaves are well known. When mature it is a large symmetrical tree of great beauty.

- Æ. *glabra*. *American Buckeye*. 50 to 60 ft. A fast growing kind, with light yellow flowers in May. Prefers heavy soil and cool atmospheres.
 - 8 to 10 ft., 1½ in. cal.....\$2.50
 - 10 to 12 ft., 2 in. cal..... 3.50
- Æ. *hippocastanum*, var. *rubicunda*. *Red-Flowering Horse Chestnut*. A handsome and desirable seedless variety; not forming so symmetrical top as the other sorts; foliage is good and the red flowers very attractive.
 - Each.
 - 5 to 6 ft.....\$3.50

WHITE ASH • Fraxinus

- F. *Americana*. *White Ash*. 50 to 60 ft. A good street or lawn tree, and easy to grow in almost any situation. It needs severe pruning when transplanted. It is fine for shade, having ample foliage for the purpose, while not so dense as to exclude air. The best American species.
 - 6 to 8 ft.....\$1.25
 - 8 to 10 ft., 1¼ to 1½ in. wide..... 1.75
 - 10 to 12 ft., 1½ to 2 in. wide..... 2.25



CATALPA BUNGI.

BIRCH • Betula

The light airy appearance of the Birches, together with the quick growth and gracefully-drooping branches, make these trees indispensable. They thrive on high, dry, or stony soils, as well as in the ordinary places. Plant in spring or early fall.

- B. alba laciniata. Cut-leaved Weeping Birch.**
35 to 40 ft. A most graceful tree, similar in habit to Weeping Willow, but with finely cut foliage. One of the loveliest lawn specimens. Each.
6 to 8 ft.\$3.50
- B. alba. European White Birch.** A graceful tree, with silvery bark, and slender branches; quite erect when young, but after four or five years assumes an elegant drooping habit, rendering the tree very effective. Each.
4 to 6 ft.\$2.00
6 to 8 ft. 2.50
- B. papyrifera. Canoe Birch.** Pure white bark is the attraction of this tree. It will develop into a large, shapely tree, with good foliage. The best of all white Birches, contrasting beautifully with surrounding plants, especially evergreens.
4 to 5 ft.\$1.25
5 to 6 ft. 1.50
6 to 8 ft. 2.00

**KENTUCKY COFFEE TREE
Gymnocladus Canadensis**

A striking ornamental, irregular, open-topped tree, with peculiar rough-barked and twigless branches, and immense broad, feathery foliage of a peculiar bluish-green color. The flowers are white, in open racemes, followed by long brown pods. Very picturesque and desirable.
8 to 10 ft.\$2.50

BEECH • Fagus

The Beeches are quite dignified trees, their habit being very distinct and characteristic. When planting or transplanting they require severe pruning. Beeches thrive in almost any situation. Among several varieties, these are most popular.

- F. ferruginea. American Beech.** 40 to 50 ft. A superb tree, of large, spreading growth. Conspicuous for its gray bark. On lawns it is usually allowed to branch close to the ground, making a beautiful specimen. A grove of low-branched Beeches will be beautiful for the present generation and for those to come. Each.
5 to 6 ft., low-branched and bushy.....\$5.00
- F. sylvatica. European Weeping Beech.** This unique form of the European Beech is well known by its tortuous outline, striving upward and at the same time drooping in all directions. Picturesque arches and garden-houses can be created by the skillful use of this tree, which will become more effective from year to year.
4 to 5 ft., low-branched and bushy.....\$6.00
- F. purpurea. Copper or Purple Beech.** Similar to the Purple Beech except that the leaves are not as highly colored. Each.
5 to 6 ft., low-branched and bushy.....\$5.00
6 to 7 ft., low-branched and bushy..... 8.00
- F. sylvatica purpurea Riversii. Purple Beech** 35 to 40 ft. The best tall-growing purple foliaged tree. From early spring till late fall, though



PURPLE BEECH.

varying in intensity of coloring at times—sometimes being almost black; there is always colored foliage. Darker than Copper Beech.

- 5 to 6 ft., low-branched and bushy.....\$5.00
- 6 to 8 ft., low-branched and bushy..... 8.00
- 10 to 12 ft. specimens.....\$15.00 to 20.00

- F. heterophylla. Fern Leaf Beech.** They place a stamp of distinction on any landscape. Each.
3 to 4 ft.\$4.50
4 to 5 ft. 5.00

CHINESE CEDRELA • Cedrela Sinensis

Pendulous clusters white flowers and tropical foliage. Rapid growth. 4 to 6 ft.Each, \$2.50

CATALPA

The large, tropical-appearing leaves and rapid growth make the Catalpa very desirable.

- C. bungei. Globe-Headed Chinese Catalpa.** 7 to 10 ft. The dense, well formed, round head, on a straight stem about 5 ft. high, makes this an admirable tree for formal planting. Each.
5 to 7 ft. stems, 1½ to 2 ft. head.....\$3.50
5 to 7 ft. stems, 2 to 2½ ft. head..... 4.50
5 to 7 ft. stems, 2½ to 3 ft. head..... 6.00

**AMERICAN RED BUD
Cercis Canadensis**

A small, round-headed tree, when given room to develop. The bare branches are covered with light pink flowers, about the first week in May. Useful for grouping with flowering trees of similar growth, but a dark background is needed to show it off. Each.

- 5 to 6 ft.\$1.50



LIQUIDAMBER, or SWEET GUM.

KATSURA TREE · *Circidiphyllum*

C. Japonica. 25 to 30 ft. An interesting tree from Japan, resembling the Birches in habit: leaves heart-shaped, silvery on the under side, and purplish leaf-stems and veins. Very hardy.
8 to 10 ft. \$5.00

DOGWOOD · *Cornus*

C. Florida. *White Dogwood*. 20 to 25 ft. The best of all the small trees. Its large white "flowers" appear about the 10th of May with us. These are followed by scarlet berries and brilliant crimson foliage in fall. A beautiful tree at all times. Does best when planted along the edges of woods. Each.
2 to 3 ft. \$1.00
3 to 4 ft. 2.00
4 to 5 ft. 2.50

C. florida flore-rubra. *Red-Flowering Dogwood*. 20 to 25 ft. An excellent companion plant for the white dogwood. The red flowers are an impressive sight. Each.
2 to 3 ft. \$2.00
3 to 4 ft. 4.00
4 to 5 ft. 5.00

PERSIMMON · *Diospyros*

A small growing tree, symmetrical shape, fruit of which is useful as well as beautiful. Each.
3 to 4 ft. \$1.50

MAIDENHAIR TREE · *Gingko*

Leaves shaped like a Maidenhair Fern. Fine for memorial purposes. Each.
8 to 10 ft. \$3.00
10 to 12 ft. 4.00

THE WALNUTS · *Juglers*

J. regia. *English Walnut*. Each.
4 to 5 ft. \$2.50
J. Japanese Walnut. Each.
4 to 5 ft. \$2.00
8 to 10 ft. 2.50

VARNISH TREE · *Koelreuteria*

K. paniculata. Panicles of showy flowers in July. Small growing habit. Each.
6 to 8 ft. \$2.50
6 to 9 ft. specimens 3.50

SWEET GUM · *Liquidamber*

L. styraciflua. 40 to 50 ft. A stately tree, with star-shaped leaves, which change to singularly brilliant colors in the fall. In this respect it equals the Sour Gum. The bark is rough and corky. Prefers low, damp places, though it succeeds as well in higher ground. A good tree for street or avenue planting. Prune closely when transplanted. Spring planting is best. Each.
4 to 5 ft. \$2.00
10 to 12 ft. specimens 8.00

EUROPEAN LARCH · *Larix Europea*

An upright-growing tree, with light green foliage. The branches when young have a drooping habit. A valuable tree where quick results are required, and a good sort for screening unsightly buildings, owing to its rapid growth and dense foliage. Makes a beautiful specimen when standing alone. Each.
4 to 5 ft. \$2.00
5 to 6 ft. 3.00
6 to 8 ft. specimens \$5.00 to 8.00

THE TULIP TREE · *Liriodendron*

L. tulipifera. *Tulip Tree*. 50 to 60 ft. The tulip tree is noted for its tall, straight bole and narrow crown. It has large leaves, and in late May or early June has a profusion of yellow tulip-like flowers, from which it derives its name "Tulip Tree." The old seed-cases hold on until pushed off by the new growth the following year. Altogether it is a very unique tree, and once known is never forgotten. A good street tree. Prefers damp soil, but thrives anywhere. Plant in spring and prune close.
6 to 8 ft. \$2.00
10 to 12 ft., 1 1/4 to 1 1/2 in. 3.00
12 to 14 ft., 1 1/2 to 2 in. 4.25

THE MAGNOLIA

It would be almost impossible to speak too highly of Magnolias; they are very beautiful trees for lawn planting. Nothing else gives such a profuse display of bloom. All have rich green foliage which is attractive throughout the growing season. They can either be trimmed up to a single stem-tree form, or allowed to grow bushy as shrubs, in which form the height could be kept to within 10 to 15 ft. When wanted in tree form, it should be stated when ordering.

M. conspicua. *Yulan Magnolia*. 20 to 25 ft. One of the most popular of all. Large, pure white flowers expand about the 20th of April, before the leaves appear. Very rare variety. Each.
3 to 4 ft. \$4.50
4 to 5 ft. specimens 7.50

M. Lennei. *Large Red Magnolia*. 20 to 25 ft. The large, cup-shaped, deep red flowers are beautiful and unlike those of any other sort. A few flowers appear from time to time all summer. Each.
3 to 4 ft. \$4.50
4 to 5 ft. 7.50
Large specimens 10.00

M. Alexandra. Deep cup-shaped pink. Excellent variety. 4 to 5 ft. Each, \$7.50

M. Soulangeana nigra. *Dark Red Magnolia.* 10 to 15 feet. Flowers later than the other varieties; very dark green foliage; dwarf habit.
 3 to 4 ft.....\$5.00
 4 to 5 ft.....7.50
 6 to 8 ft. specimens.....\$8.00 to 15.00

M. Soulangeana. *Pink Magnolia.* 15 to 20 ft. The most popular of all Magnolias. A strong grower and blooms profusely, even when quite small. The flowers are large pink on the outside and white on the inside. Blooms about the third week in April. It can be grown as a small tree or a large shrub. Each.
 3 to 4 ft.....\$5.00
 4 to 5 ft.....7.50
 Larger specimens.....\$7.50 to 15.00

M. Stellata. *Hall's Japanese Magnolia.* Of low and shrub-like form, the flowers are pure white, the petals long, narrow, and arranged in double rows; the fragrance is pronounced and delicate. Blooms earlier than any other Magnolia, and is very striking. Each.
 2 to 3 ft.....\$4.50
 3 to 4 ft.....7.50
 Larger specimens.....\$10.00 to 20.00

M. Glauca. *Sweet Magnolia.* A dwarf tree, perfectly hardy; blooms in July; foliage dark green and glossy. Each.
 3 to 4 ft.....\$3.00
 6 to 7 ft.....6.00

M. Tripatala. *Umbrella Tree.* Open-headed large green leaves and fragrant blossoms in May and June. Each.
 3 to 4 ft.....\$1.50
 10 to 12 ft.....8.00

THE MULBERRY · Morus

M. Tartarica. *Trees Weeping Mulberry.* The sweet, fleshy fruits are a great attraction to birds and should be planted extensively. Grafted on stems about 5 ft. high, the pendulous branches completely hide the stems and sweep the ground. Each.
 5 to 6 ft. stems, 1 year head.....\$3.00
 5 to 6 ft. stems, 2 year head.....4.50

M. alba Tartarica rubra. *Red Russian Mulberry.* Upright, fruits same as above variety, but the fruit is a deep reddish black. Each.
 5 to 6 ft.....\$1.50
 6 to 8 ft.....2.50

SOUR GUM · Nyssa

N. Sylvatica. *Sour Gum.* A picturesque hardy ornamental tree, valued for its flaming scarlet autumn foliage. A good grower in any soil, but attains its largest size in damp or swamp ground. Each.
 6 to 8 ft.....\$3.50

PLANE TREE · Platanus

P. orientalis. *Plane or Buttonball.* 40 to 50 ft. The best street tree for cities. Of quick growth, spreading character, and with occasional pruning it develops into a shapely specimen. Prune severely when transplanted. Each.
 6 to 8 ft.....\$1.00
 8 to 10 ft., 1¼ to 1½ in. cal.....2.00
 12 to 14 ft., 1¾ to 2 in. cal.....3.00
 12 to 14 ft., 2 to 2½ in. cal.....3.50

THE POPLARS · Populus

P. nigra, var. Italica fastigiata. *Lombardy Poplar.* A formal tree of pyramidal habit; very desirable for screen and wind breaks. Each.
 6 to 8 ft.....\$1.00
 8 to 10 ft., 1¼ to 1½ in.....1.50
 10 to 12 ft., 1½ to 1¾ in.....2.50

FLOWERING PLUM · Prunus

P. Pasardi. *Purple-Leafed Plum.* Bright purple leaves that hold their color all summer; fine when set in the back ground in group planting.
 3 to 4 ft.....\$1.50
 4 to 6 ft.....2.50

P. triloba. *Double-Flowering Plum.* This small growing tree is a great favorite; the branches are completely covered with double pink flowers in May; foliage green. Each.
 2 to 3 ft.....\$1.50
 3 to 4 ft.....2.50



AVENUE OF ORIENTAL PLANES.



WEeping WILLOW.

FLOWERING CRAB APPLE · Malus

- Malus Sanginea.** A dark rose-colored, with small showy fruit. Each.
- 3 to 4 ft. \$2.50
 - 4 to 5 ft. 3.00
 - 5 to 6 ft. 4.00
- M. Ioensis Bechtel.** *Bechtel's Double-Flowering Crab Apple.* 15 to 20 ft. Double blossoms, deep pink in bud, opening light pink. A beautiful new variety, which in flower sends every one into raptures. Each.
- 2 to 3 ft. \$1.50
 - 3 to 4 ft. 2.00
 - 4 to 5 ft. 2.50
- M. Spectabilis.** Double deep coral-red flowers; very showy. Each.
- 3 to 4 ft. \$2.00
- M. Floribunda.** Single rose-colored flowers in great profusion, followed by red fruit. Each.
- 3 to 4 ft. \$2.00
 - 4 to 5 ft. 3.00

THE OAKS · Quercus

The Oaks are not all slow-growing, as many suppose, but keep pace with most other trees, and are superior to all in view of their rugged character. Many are of great beauty, for avenues, parks, public grounds and similar places. Where they can be given room to develop, they will prove to be very beautiful. When transplanted they require severe pruning, which will enable them quickly to recover and make rapid growth. The best popular kinds, on which every one may rely, are mentioned.

Q. alba. *White Oak.* 60 to 75 ft. The most notable of all hardy American Oaks. Large-growing, forming a wide spreading head when fully developed, and huge limbs. The foliage

- assumes a light purplish hue in late autumn. Suitable for avenue planting. Each.
- 6 to 8 ft. \$3.00
 - 8 to 10 ft., 1½ to 2 in. cal. 4.00
- Q. coccinea.** *Scarlet Oak.* 50 to 60 ft. A highly esteemed Oak, for the bright scarlet autumnal color it takes on. It has attractive finely-lobed leaves. Essential to lawn ornamentation of any pretension. Each.
- 8 to 10 ft. \$3.00
 - 10 to 12 ft., 1½ to 2 in. cal. 4.00
 - 12 to 14 ft., 2 to 2½ in. cal. 5.00
- Q. palustris.** *Pin Oak.* 50 to 60 ft. The fastest growing Oak. Foliage deep green and finely divided. With age the lower branches droop till they almost touch the ground. Leaves become a scarlet and yellow color in autumn. We highly recommend it for every purpose, as few trees are more beautiful. Good street trees. Each.
- 6 to 8 ft. \$2.00
 - 8 to 10 ft. 2.50
 - 10 to 12 ft., 1½ to 2 in. cal. 3.50
 - 12 to 14 ft., 2 to 2½ in. cal. 4.00
 - 14 to 16 ft., 2½ to 3 in. cal. 6.00
 - Large specimens. \$10.00 to 15.00
- Q. rubra.** *Red Oak.* 50 to 60 ft. A large and handsome tree with symmetrical round-topped crown. A grand specimen of street tree, and of the most rapid growing Oaks. Each.
- 8 to 10 ft., 1¼ to 1½ in. \$3.00
 - 10 to 12 ft., 1½ to 1¾ in. 3.50
 - 10 to 12 ft., 1¾ to 2¼ in. 5.00

THE WILLOW · Salix

Rapid growing and thriving where other trees fail to succeed make the Willow a desirable tree. Set in the spring; fall planting is not successful as a rule.

- S. Babylonica. Weeping Willow.* 35 to 40 ft. The well known weeping form, with long, slender pendent branches, so commonly used about ponds and lakes. Prune closely when transplanting. Each.
- | | |
|-----------------|--------|
| 6 to 8 ft..... | \$1.50 |
| 8 to 10 ft..... | 2.50 |
- S. caprea. Goat or Pussy Willow.* A small tree with upright branches. Catkins very numerous, appearing in spring before the leaves. Handsome in flower and greatly esteemed by reason of its extreme earliness. Each.
- | | |
|----------------|--------|
| 3 to 4 ft..... | \$1.00 |
|----------------|--------|
- S. elegantissima. Thurlow's Weeping Willow.* Bright yellow bark. A new and beautiful variety. Similar in habit to the *Babylonica*. Each
- | | |
|-----------------|--------|
| 8 to 10 ft..... | \$1.50 |
|-----------------|--------|
- S. pentandra. Bay or Laurel-Leaved Willow.* 20 to 30 ft. Very ornamental and unusual tree. The habit may be confined to tree form, or it may be left bushy. Thrives in high or low ground, and at the seashore. Each.
- | | |
|----------------------------------|--------|
| 5 to 6 ft..... | \$1.25 |
| 6 to 8 ft., 1½ to 2 in. cal..... | 2.50 |

MOUNTAIN ASH • Sorbus

- S. aucuparia. European Mountain Ash.* A pretty tree, with fine pinnate foliage. Bears numerous clusters of bright red berries, which are very conspicuous and handsome from mid-summer until frost. Each.
- | | |
|----------------|--------|
| 5 to 6 ft..... | \$2.00 |
| 6 to 8 ft..... | 2.50 |



AMERICAN LINDEN.

CYPRESS • Taxodium

- T. distichum. Deciduous Cypress.* A beautiful stately tree of pyramidal form. The branches are covered with bright brown bark, and the beautiful feathery foliage makes it one of the most ornamental trees offered. It should be extensively planted. 4 to 5 ft.....Each, \$1.50

LINDEN • Tilia

A quick grower, and a good shade tree. Fine for street or lawn use. The flowers are very numerous and deliciously fragrant, scenting the surrounding air.

- T. Americana. American Linden or Basswood.* 50 to 60 ft. An attractive, fine, large-sized tree, of rapid growth, well suited for broad avenues, parks and public places, where it can develop. Each.
- | | |
|--|--------|
| 10 to 12 ft., 1½ to 2 in. cal..... | \$3.00 |
| 12 to 14 ft., 2½ to 3 in. cal..... | 4.00 |
| 12 to 14 ft., 3 to 3½ in. cal. specimens.. | 5.00 |
- T. Europæa. European Linden.* 30 to 40 ft. A large-sized tree with small leaves forming a compact round head. The foliage is so dense and the tree so broad that it looks mature when only 15 feet high. Each.
- | | |
|--|--------|
| 8 to 10 ft., 1¼ to 1½ in..... | \$2.50 |
| 10 to 12 ft., 1½ to 2 in. specimens..... | 3.25 |
- T. Europæa argentea. Silver-leaved Linden.* 30 to 35 ft. A large tree, with a compact, round head. Splendid for the lawn. The leaves are green above and silvery beneath, and hold their color late in the fall. Each.
- | | |
|-----------------------------|--------|
| 8 to 10 ft..... | \$3.00 |
| 10 to 12 ft..... | 4.50 |
| 12 to 14 ft. specimens..... | 7.50 |



AMERICAN LINDENS

Growing in our Nursery. Remarkable for their straight trunk and symmetrical tops. Representative of thousands of trees we offer in this catalogue.

Deciduous Trees

B. F. BARR & CO., LANCASTER, PA.

JAPANESE STORAX • Styra

S. Japonica. Small tree of pleasing habit; white drooping flowers in June, resemble pearls fastened to the twigs. Attractive glossy foliage. One of the best small growing flowering trees. Each.

3 to 4 ft.....	\$1.25
4 to 6 ft.....	2.00

ELM • Ulmus

U. Americana. *American Elm.* 50 to 60 ft. Our native Elm is too well-known to need description. Just the tree for quick growth and is unsurpassed for city and suburb planting, either as a street or specimen tree. None more graceful. Prefers moist soil. Each.

8 to 10 ft., 1¼ to 1½ in.....	\$2.00
10 to 12 ft., 1½ to 2 in.....	3.00
12 to 14 ft., 2 to 2½ in.....	4.00
14 to 16 ft., 2½ to 3 ft.....	5.00

U. montana pendula. *Camperdown Elm.* When grafted 6 to 8 ft., it forms one of the most picturesque drooping trees in cultivation, making a zigzag growth outward and downward. The leaves cover the ground so as to form a complete arbor. No other tree closely resembles it; entirely distinct. Each.

5 to 6 ft., 2-ft. spread.....	\$6.00
-------------------------------	--------

U. scabra. montana. *Scotch Elm.* This tree forms a broad, round-topped head, with heavy spreading branches; perfectly hardy, and an extremely good sort; practically beetle-proof. Each.

8 to 10 ft., 1 to 1½ in.....	\$2.50
10 to 12 ft., 1½ to 2 in.....	3.00

ORNAMENTAL TREES ASSEMBLED FOR SPECIAL PLACES

TREES FOR CITY PLANTING

Ash, American; Fraxinus Americana.
 Elm, American; Ulmus Americana.
 Linden, American; Tilia Americana.
 Oak Scarlet; Quercus Coccinea.
 Maple Norway; Acer Platinoides.
 Maiden Hair Tree; Ginkgo Biloba.
 Platanus Orientalis; Plane or Buttonball.

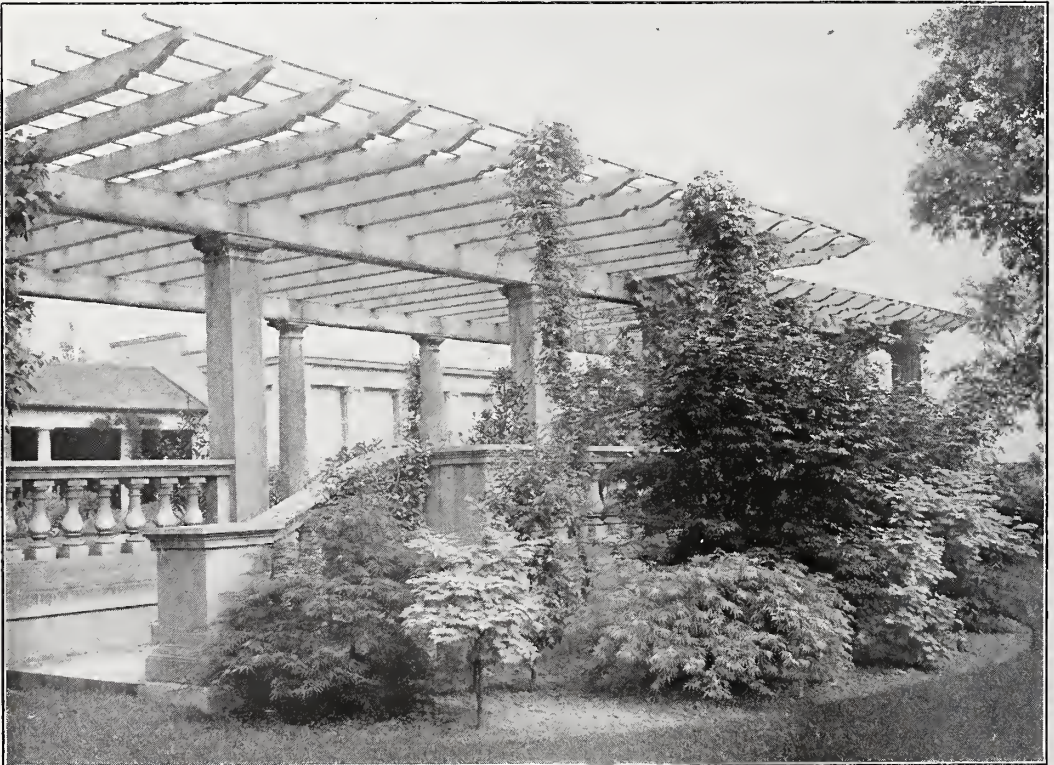
TREES FOR FORMAL EFFECT

Camperdown Elm; Ulmus Camperdownii.
 Catalpa Bungii.
 Weeping Mulberry; Morus Alba.

TREES WITH ATTRACTIVE AUTUMN FOLIAGE

Maple Sugar; Acer Saccharum.
 Oak, White; Quercus Alba.
 Oak, Scarlet; Quercus Coccinea.
 Sweet Gum; Liquidamber Styraciflua.
 Tulip Tree; Liriodendron Tulipifera.

BARR'S GUARANTEE means no risk to you. We guarantee every plant from our Nurseries, and give new ones for those that do not grow satisfactorily. The cost of transportation and planting, however, is to be borne by the purchaser. In other words, Barr's trees, plants and shrubs must grow to your satisfaction, otherwise we replace them free of charge, or refund your money.



A PLEASING EFFECT OF JAPANESE MAPLES.

ORNAMENTAL SHRUBS

This class of home planting is beautiful in its dense leafiness, still more beautiful in its countless flowers, and the varying sizes of the plants make them suitable for planting in every lawn. No planting, whether large or small, is complete without them. They are very suitable for planting around the outer edges of your lawn, in the foreground of a group of trees, along walks and drives, and the taller varieties can be planted in front of some unsightly object, thus screening it from view.

They look better when three or more of a kind are grouped together, if the size of your lawn will permit it. Care should be taken when grouping them together to have the dwarf varieties planted in front of the others. The low growing varieties look very nice planted around the house and porch foundations.

The selection of shrubs which we offer contains the best, the most useful of those now in the nursery trade, and all have been tested and found desirable for use in this locality.

AMYGDALUS • Almond

A. nana. *Flowering Almond.* Dwarf. Pink and white. About May 1, before the leaves appear, the bare branches are clothed with a profusion of double flowers. 2 to 3 ft.....Each, 75c

ACANTHOPANAX • Bush Aralia

Attractive shrub; light gray twigs in winter; yellow flowers in June. Excellent for dry sandy soil. Each.
 2 to 3 ft.....\$.50
 3 to 4 ft......60

ARALIA

A. Spinosa. Good for tropical effect. Leaves 3 to 4 feet long; branches upright. Flowers in July. 6 to 8 ft.....Each, \$1.50

ARONIA

A. arbutifolia. *Red Chokeberry.* White flowers in May, followed by red berries in the fall. 2 to 3 ft.....Each, \$.50
A. Nigra. *Black Chokeberry.* Similar to above except they produce black berries in the fall. 2 to 3 ft.....Each, \$.50

AZALEA

(See also page 20)

Native and Chinese Varieties

Large flowers of many shades of red and yellow. Dwarf, hardy and useful in groups or borders. Bloom in May. Each.
 1 to 1½ ft.....\$2.50
 1½ to 2 ft.....3.00

BERBERIS • Barberry

B. Thunbergii. *Japanese Barberry.* A very popular low hedge-plant of great hardiness, and soon becomes such a dense mass of thorny canes that dogs and cats cannot pass through. Flowers followed by bright red berries that remain on plants till February. Foliage small, dark green, turning to brilliant colors in fall. Effective for use in edging shrubbery or in masses. Each. Ten. 100.
 1 to 1½ ft.....40c \$3.50 \$25.00
 1½ to 2 ft.....50c 4.50 40.00

CALYCANTHUS • Sweet Shrub

C. floridus. *Sweet Shrub.* Doubtfully hardy north of Lancaster. A great favorite in gardens, because of the maroon-colored flowers which are very fragrant when crushed. Each.
 3 to 4 ft.....\$.75

BUDDLEIA • Butterfly Bush

B. variabilis magnifica. *Butterfly Bush,* or *Summer Lilac.* Flowers resemble purple lilac in both shape and color. Especially fine for cutting. They grow to a height of 4 ft. and flower from July to frost. Each. Ten.
 Strong potted plants.....\$.50 \$4.50
 Large 3-year plants......75 6.00



BERBERIS THUNBERGII.
 The natural growth is excellent for grouping or hedges.



CORCHORUS JAPONICA, Fl.-Pl.

the winter their brightly-colored twigs stand out in strong contrast against the snow or against a dark background. To be sure of an abundance of bright twigs in winter, prune often enough to insure plenty of young growth.

- C. *Mass.* Yellow flowers in April. Large scarlet fruits in autumn. The branches turn bright red in winter. Very beautiful. 3 to 4 ft.....Each, 50c
- C. *stolonifera.* Red-Osier Dogwood. Medium. In May or June this bears flat bunches of white flowers which are followed by white fruit. The twigs are dark, blood-red. 3 to 4 ft.....Each, 50c
- C. *paniculata.* Panicked Dogwood. 6 to 8 ft. Upright in habit. Branches gray, leaves dull green and whitish below. Fruits white, with red stems. 3 to 4 ft.....Each, 50c
- C. *Aurea.* Golden Twigged Dogwood. Medium growing; bright yellow bark all winter. 3 to 4 ft.....Each, 50c
- C. *Florida.* See Trees. C. *Florida Rubra.* See Trees.

CORCHORUS · Kerria

- C. *Japonica.* A handsome small shrub, bearing single yellow flowers throughout the summer. The green branches form a decided contrast to the other shrubs in winter. 2½ to 3 ft.....Each, 75c
- C. *Japonica fl.-pl.* A very double, deep yellow form of the above. 2½ to 3 ft.....Each, 75c

CORYLUS · Hazel

- C. *avellana purpurea.* Hazel. Tall. Where one wants a color contrast in a border planting, this is an excellent shrub. The large leaves are at first almost black, but later they fade to a light purple. Good as a specimen plant, or in groups. 2 to 3 ft.....Each, \$1.00
- C. *Cosford's.* Thin-shelled. The best thin-shelled hazel, ornamental as well as useful. 3 to 4 ft.....Each, \$1.25

CARYOPTERIS · Blue Verbena Shrub

C. *mastacanthus.* Blue Verbena Shrub. Dwarf. An unusual plant in that it blooms in the fall when most shrubs are through blooming. Flowers small, violet-blue or lavender-blue. Strong plants.....Each, 75c

CERCIS · Red Bud

C. *Canadensis.* American Red Bud. Splendid for wood land, moist soils. The branches are completely covered with pink flowers in April. 3 to 4 ft.....Each, \$1.25

CHIONANTHUS · White Fringe

C. *Virginica.* White Fringe. Tall. A well-shaped plant of good habit. The long coral-like strands of white flowers make it a very striking plant when in bloom in late spring. Spreading in habit, thus making a good background for other and lower shrubbery. 3 to 4 ft.....Each, \$1.50

CLETHRA · Sweet Pepper Bush

C. *alnifolia.* Sweet Pepper Bush. Medium. In mid-summer this attractive shrub bears an abundance of upright spikes, crowded with white fragrant flowers, from which it gets its name. 2 to 2½ ft.....Each, 75c

CYDONIA

C. *Japonica.* Japan Quince. Attractive scarlet flowers in May. 2 to 2½ ft.....Each, 75c
Pink Flowery variety of the above. 2 to 2½ ft.....Each, 75c

CORNUS · Bush Dogwood

These plants are attractive the year round. In summer or early spring they bear large panicles of flowers which are followed by brightly-colored berries. During



BUDDLEIA VARIABILIS MAGNIFICA.
Butterfly Bush (see page 11).

CRATÆGUS · Hawthorn

Dense shrubs of excellent habit, having fine foliage, a profusion of bloom, followed by red haws. The foliage assumes brilliant coloring in the fall.

C. *Crus-galli*. *Cockspur Thorn*. Tall. Beautiful green foliage that has the appearance of being evergreen, but 's not. Long thorns make this an excellent hedge-plant. The bright red fruits frequently hold on till spring. 4 to 5 ft. Each, \$1.25

C. *Oxyacantha*. *English Hawthorn*. Tall. There are many varieties of this desirable plant, some of which have double flowers. It blooms in May, and the double forms are particularly pleasing. Of the many forms, we have selected three that are especially desirable. Double White, Double Pink, and Paul's Double Scarlet. The latter is one of the most showy of all. 4 to 5 ft. Each, \$1.50
5 to 6 ft. " 3.00

CALLICARPA · Purpurea

A splendid berried shrub for the border, or planted in clumps on the lawn it grows about 3 ft. in height. Its branches curve gracefully, and are covered in August with tiny pink-tinted flowers, followed in September by great masses of violet-purple berries, making it a very unusual and showy plant. 2 to 2½ ft. Each. 75c

DEUTZIA

The plantings of shrubbery would indeed be uninteresting without the dainty Deutzias. Each spring they are covered with beautiful, bell-shaped flowers that are particularly attractive. No collection is complete without them. By pruning in summer, after the plants have passed out of bloom, one can insure a profusion next year.

D. *Lemoinei*. 3 to 4 ft. Similar to *D. gracilis*, except that it is taller and more vigorous in growth. Flowers pure white in large panicles. 2 to 2½ ft. Each, 75c

D. *crenata*. Tall. A good plant to grow singly as a specimen, or it can be grouped with others in the background of a border-planting. Double pink and double white forms. Each. 3 to 4 ft. 75c Larger plants. \$1.00



DEUTZIA CRENATA.
The latest of the Deutzia to bloom.

D. *gracilis*. 2½ to 3 ft. The best low-growing flowering shrub for a low hedge, or also as a border for plantings of larger shrubs. Flowers white, bell-like. Each. 1½ to 2 ft. \$.50
2 to 2½ ft. 75

D. *Gracilis Rosea*. Pink form of the *gracilis* variety. Dwarf in habit. Each. 2 to 2½ ft. \$.75

EUONYMUS · Burning Bush

E. *alatus*. *Winged Burning Bush*. You will want this curious plant for variety's sake. It has corky, winged bark. Small yellow flowers in June. The foliage takes high coloring in the fall. Each. 2 to 3 ft. \$1.00

3 to 4 ft. 1.50
4 to 5 ft. 2.50

E. *Europaenus*. *American Burning Bush*. The flowers come in June and are inconspicuous, but they are followed by a bright-red deeply-lobed capsule, holding the seed, which is decidedly attractive in late fall and early winter. 3 to 4 ft. Each, 75c

EXOCHORDA · Pearl Bush

E. *grandiflora*. *Pearl Bush*. The most brilliant shrub in its season, when clothed with a mass of dazzling white flowers. The plant is rather thin in habit, and its foliage is uninteresting, but these defects can be somewhat overcome by pruning.

Each. Ten.
2 to 3 ft. \$.75 \$5.00
3 to 4 ft. .90 7.50



FOLIAGE AND FLOWERS OF DOGWOOD. (See page 6.)

Six Plants for the price of Five, where price Each only is quoted.



LONICERA, Bush Honeysuckle.

ELAEAGNUS · Oleaster

E. angustifolia. *Russian Olive.* Tall. The foliage is a very handsome, rich silvery white; flowers small golden yellow, followed by yellow fruit covered with silvery scales.

3 to 4 ft.....Each, \$1.00

E. longipes. *Japanese Oleaster.* Similar to above except that the branches are reddish brown, foliage grey on under side; orange-colored fruits. Fruit edible, enjoyed especially by birds.

3 to 4 ft.....Each, \$1.00

FORSYTHIA · Golden Bell

No garden would be complete without one or more specimens of these harbingers of spring. With the first warm spring days they push out golden yellow flowers, and there are so many the plant looks like a huge, yellow ball. It is one of the earliest of the flowering shrubs.

F. suspensa. *Drooping Golden Bell.* Tall. Has a drooping habit, and so it is very valuable in covering banks or walls. The canes are frequently 6 and 8 ft. long. It can also be trained over trellises. 3 to 4 ft.....Each, 75c

F. viridissima. Tall. Except for the habit, one could hardly distinguish this form from the *F. suspensa*. It is more upright, the foliage is a trifle darker green in color, and the flowers a little lighter yellow. Blooms with *F. suspensa*.

2 to 3 ft.....50c 3 to 4 ft.....75c

HALESIA · Snowdrop Tree

H. tetraptera. *Snowdrop Tree.* Tall. Before the foliage appears in May, this tree-shrub, or small tree, is covered with a bewildering cloudy mass of small, snowy white flowers. They resemble snowdrops. When set against a dark background, it is a truly wonderful sight.

3 to 4 ft.....Each, 75c

HIBISCUS · Rose of Sharon

Althaea, or *Rose of Sharon.* Tall. This well-known plant is one of the handsomest of our late-flowering shrubs. It blooms during July and August when flowers in the shrubbery are getting scarce. The plants are very stiff and upright in habit, somewhat formal. The flowers are single or double and in all shades of colors from white to nearly black. These should be pruned in winter or early spring. This will not interfere with blooming, as would be the case with most shrubbery. Make good hedge-plants and stand trimming well. Special price on quantities.

H. Syriacus. There are many varieties of this good, old-fashioned plant and, from this mass of forms, we have selected nine which to us seem the best to offer. They are:

- Beatrice.** Single; pink, red center.
- Duc de Brabant.** Double; red, shaded pink.
- Pæoniflorus.** Rosy pink.
- Rubra-plena.** Double; magenta.
- Totus albus.** Single; pure white.

2 to 3 ft., 50c each; 3 to 3½ ft., 75c each; 3½ to 5 ft., \$1.00 each. Larger sizes, \$1.25 to \$1.50 each.

SHRUBS AND THEIR USES

The right shrub in the right place usually gives pleasing results, but it follows that unless you are familiar with the adaptability of shrubs, to meet the conditions that may be found in your planting, it is extremely difficult to select just the right one. Let our Landscape Department help you.



HALESIA, Snowdrop Tree.

HYPERICUM AUREA

Lemon yellow flowers; dwarf habit; useful in borders; bloom in midsummer most profusely.
 1 to 1½ ft.....Each, 50c 1½ to 2 ft.....Each, 60c

HYDRANGEA

All Hydrangeas are well adapted for growing as specimen plants, to use as low hedges, or mixed with other shrubs. Their foliage is handsome the entire year, and there are no other shrubs grown which produce bloom in such size and quantity. Everybody knows the fall-blooming sort, *H. paniculata grandiflora*, which produces heads of flowers of great size, which remain upon the plants for weeks in good condition. There is an early blooming variety, *H. Hills of Snow*, which flowers in July. To get the best results from these, pruning should be done during winter or early spring. The harder the pruning, the larger the flowers.

H. arborescens grandiflora. "*Hills of Snow.*" We believe this is destined to be one of the most popular shrubs. The pure white flowers are borne in large, round clusters like big snowballs, from June to August. (See illustration.)
 2 to 3 ft.....Each, 50c

H. Japonica hortensis Otaksa. Large blue or pink flowers, borne in broad heads of immense size. The colors are sometimes not constant. If blue flowers are wanted apply iron filing to the roots, otherwise they will be pink.
 Pot-grown plants.....Each, \$1.00 to \$5.00
 According to size.

H. paniculata. Early-flowering. The flowers are borne in large, upright panicles, which are not so solid as in the next one. Blooms in July.
 3 to 4 ft.....Each, 75c

H. paniculata grandiflora. The common Hydrangea of lawns. Good as a low hedge or mixed with shrubbery. Give it a heavy background.

	Each.	Ten.
2 to 3 ft.....	\$.50	\$4.00
3 to 4 ft.....	1.00	8.50



HYDRANGEA. "HILLS OF SNOW."

H. paniculata grandiflora. Standard. Tree-like forms of the above and particularly useful in formal gardens. Prune heavily to keep them in shape and producing large flowers. Vigorous plants. 3½ to 4 ft. stems.....Each, \$2.00 to \$3.00

H. quercifolia. *Oak-Leafed Hydrangea.* Foliage large, shaped like oak leaves; flowers white; bloom in August

	Each.
1½ to 2 ft.....	\$1.25
2 to 2½ ft.....	1.50

KERRIA · Corchorus

K. Japonica flore-pleno. *Corchorus.* Although the first rush of bloom comes in April, the plant is covered all the summer season with double, golden yellow blossoms. Foliage attractive all summer. Branches slender and of an attractive green color all season. 2 to 3 ft.....Each, 50c

LIGUSTRUM · Privet

The Privets are valuable because of their dark green foliage, which can be used to great advantage as a background for other and more showy flowering plants. They are used, to a very great extent, for hedges, and the California Privet is the most popular. We make a leading specialty of the latter, of which we grow 100,000 annually.

L. Ibota. *Japanese Privet.* Upright in growth and foliage persists until winter. Very hardy.

	Each.	Ten.
3 to 4 ft.....	\$.50	\$3.00
4 to 5 ft.....	.65	4.00

L. Ibota Regelianum. *Regel's Privet.* This differs from the preceding kind in that the ends of the branches droop, which produces a very attractive and distinctive characteristic possessed by none of the other forms of Privet.

	Each.	Ten.	100.
2 to 2½ ft.....	.30c	\$3.00	\$25.00
2½ to 3 ft.....	.60c	4.00	30.00
3 to 4 ft.....	.75c	5.00	35.00



HYDRANGEA PANICULATA GRANDIFLORA.

Ornamental Shrubs

B. F. BARR & CO., LANCASTER, PA.

California Privet

L. ovalifolium. California Privet.
Too well known to need describing. Besides its use for hedges, it is excellent for specimens.

Each. Ten. 100.
18 to 24 in..... — \$.75 \$5.00
36 to 48 in.....40c 2.50 10.00

L. ovalifolium aureum. Dwarf. A bright golden Privet, superior to all other variegated forms. Useful for contrast with other plants
10 to 12 in.....Each, 35c
18 to 24 in..... “ 75c

LONICERA · Honeysuckle

The Honeysuckles are among the very best shrubs grown. They have small white, yellow or pink flowers, that are fragrant and are followed by bright red or yellow berries that persist until late fall. Birds are fond of these fruits.

L. fragrantissima. Fragrant Honeysuckle. Tall. Blooms among the earliest, sometimes in March. Flowers white, tinged with pink and are very fragrant. Fruit scarlet; foliage almost evergreen.
2 to 3 ft.....Each, 50c

L. Morrowi. Japanese Honeysuckle. The flowers are yellow and are followed in August by bright red fruits which hang on till late fall. A very attractive plant of extreme hardiness. Each.
2 to 3 ft.....50c

L. Tatarica grandiflora. A large-flowered form of the most common of the Honeysuckle. Each.
12 to 15 in.....50c
3 to 4 ft.....75c



Effective planting like this may be secured by the use of our CALIFORNIA PRIVET, TREES AND VINES.

POTENTILLIA

P. Fruticosa. Dwarf plant with feathery leaves. Cromo yellow flowers in June. Each.
1½ to 2 ft.....75c

PHILADELPHUS · Mock Orange

An old-fashioned plant that carries with it an abundance of fragrance and fragrant memories. There should be one or more of these plants among the shrubbery for perfume. They are also attractive all the season when grown as specimen plants. Prune immediately after flowering so as to get a good supply of flowers the next year.

P. coronarius. Old-fashioned Mock Orange. Somewhat stiff in habit but still a delightful plant for the lawn. Flowers very fragrant. Good screen plant. 3 to 4 ft.....Each, 50c

P. coronarius aureus. Golden Mock Orange. Dwarf. In the early spring the foliage is particularly bright golden in color. Each.
2 to 2½ ft.....75c

P. grandiflorus. Large-flowered Mock Orange. The flowers are larger than in the other species, but there is very little fragrance. Develops into a very bushy specimen. Each.
3 to 4 ft.....50c

P. Lemoinei. Lemoine's Mock Orange. The sweetest of all the Mock Oranges. This hybrid varies some in form, but we have selected a very close compact-growing type that makes very pretty specimens. Each.
3 to 4 ft.....75c

RHODOTYPOS · White Kerria

R. kerrioides. White Kerria. Pretty elm-like leaves clothe this bush and an abundance of white flowers are borne in May, which are followed by small shiny-black fruit, four in a cluster, that persists until winter. Each.
2 to 3 ft.....50c
3 to 4 ft.....75c

RHUS · Smoke Bush

R. Cotinus. Smoke Bush. A large-growing shrub which is covered in early summer with a plummy, purplish mass of bloom. In fall foliage turns red and yellow. Each.
3 to 4 ft.....\$.50
4 to 5 ft.....1.25

R. glabra laciniata. Cut-Leaf Sumach. A dwarf form having finely divided leaves. Good for waste places, for it suckers freely. Coloring in fall, crimson. Each.
3 to 4 ft.....75c



SPIREA VAN HOUTTEI.

R. Aromatica. *Fragrant Sumach.* A spreading shrub with pretty, lobed leaves; yellow flowers, followed by red fruits. Each. 60c
2 to 3 ft.....

RUBUS

R. Odoratus. *Flowering Raspberry.* Dwarf shrub with ornamental foliage; rich rosy flowers in June. Each. 75c
1½ to 3 ft.....

RIBES • Currant

R. aureum. *Yellow Flowering Currant.* Its fragrant, yellow flowers, which are borne late in May, are the chief attraction. They are followed by black, edible fruits. Prefers a cool location and thrives best in partial shade. Each. 75c
3 to 4 ft.....

R. Sanguineum, fl. pl. Habit same as above flowers; purple red in May. Each. \$1.00
3 to 4 ft.....

ROBINIA : Rose Acacia

R. hispida. *Rose Acacia.* Clusters of exquisite pink pea-shaped flowers are produced on this shrub in June. Uncommon. Each. 75c
2 to 3 ft.....

ROSA • The Rose

In this list we mention only those which will prove satisfactory in connection with shrubbery. For the others which are grown for cut-flowers, see pages 29-31.

R. Persian Yellow. An old garden variety of great merit, bearing golden yellow roses. Pot-grown, 2 years old..... Each, 75c

R. rubiginosa. *Sweetbriar.* Another old-time favorite, bearing single pink roses. Even the foliage has a fragrant odor, particularly when the dew is on. Pot-grown, 2 years old..... Each, 75c

R. Carolina. Upright in habit; flowers 2 inches across; fragrant and single pink blooms in July and August. 2-year plants..... Each, 75c

R. rugosa. *Japanese Rose.* Flowers 3 inches across are not uncommon. The foliage is a pretty, dark green. Is cat- and dog-proof. The great red hips of fruit remain all winter. White or red varieties may be had.

1½ to 2 ft..... Each, 75c

R. rugosa, Thomas Lipton. Improved Rugosa. Semi-double pink flowers.

2-year plants..... Each, 75c

SPIRÆA

The Spireas have a longer-blooming season as a genus than any of the other hardy shrubs grown. Early in May they commence to bloom, and some of the species are still blooming when the frosts come. Prune the spring-blooming kinds after blooming in the early summer. The late bloomers, like Anthony Waterer, prune in winter.

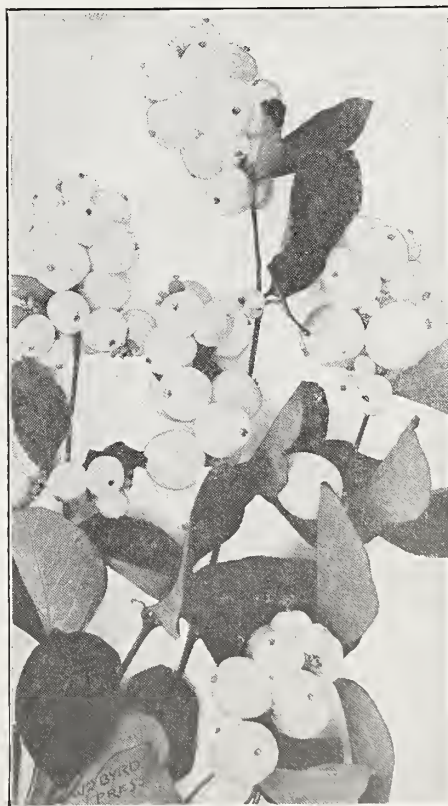
S. Bumalda, Anthony Waterer.

Dwarf. The crimson flowers are borne freely in flat heads, which show first in June and

continue in bloom to some extent all summer.

	Each.	Ten.
1½ to 2 ft.....	50c	\$4.00
2 to 2½ ft.....	75c	6 00

S. callosa. Pink flowers in flat clusters appear in early July and for some time afterward. Good for low border. 2 to 2½ ft..... Each. 60c



SNOWBERRY.



SPIREA FRUNIFOLIA.

S. Salicifolia. *Willow-leaved Spirea.* Fond of wet ground; white flowers in July. Each.
 2 to 3 ft.....50c

SAMBUCUS • Elder

S. acutifolia. *Fern-leaved Elder.* One of the most attractive shrubs. 3 to 4 ft.....Each, 75c

S. nigra aurea. *Golden Elder.* Attractive because of its bright golden foliage. Each.
 3 to 4 ft.....50c

STEPHANANDRA

S. flexuosa. Of compact habit, with small, hawthorn-like leaves. The flowers are white and borne in small bunches in July. Very good for rocky places, as well as shrub-beries, because of its graceful habit. Each.
 2 to 3 ft.....50c
 3 to 4 ft.....75c

STYRAX

S. Japonica. An exceedingly desirable shrub, graceful branches, tall growing; fragrant white flowers in June. 3 to 4 ft.....Each, \$1.00

S. Douglasi. Similar to our native Hardhack. Deep pink flowers in July and August, borne in great abundance on conical spikes. Each
 2 to 3 ft.....50c
 3 to 4 ft.....75c

S. Van Houttei. Also called Bridal Wreath. The most beautiful of early-blooming Spireas. The long pendulous branches, when laden with masses of white blossoms, always sweep the ground. Excellent for hedges. If wanted in quantities for this purpose we will be pleased to offer attractive prices. Each.
 2 to 3 ft.....50c
 3 to 4 ft.....75c

S. Thunbergii. The earliest of the Spireas to bloom; dwarf and very distinctive because of its narrow, light green foliage. The flowers are very small, a pure white, but borne in great profusion. 2 to 3 ft.....Each, 50c

S. prunifolia fl.-pl. *Bridal Wreath.* Pure white double flowers are borne in clusters of two or three on bare stems. The foliage is dark green and shiny. 2 to 3 ft.....Each, 75c

S. opulifolia. *Nine-bark.* An attractive native shrub with white flowers, borne in large panicles in early June, followed by red seeds. 3 to 4 ft.....Each, 50c

S. opulifolia aurea. *Golden-leaved Nine-bark.* Very similar to the above, except for its green foliage. 3 to 4 ft.....Each, 50c

S. Aitchisonia. *Ash Leaf Spirea.* A beautiful new variety with ash-like foliage; white flowers in June; semi-dwarf habit. Each.
 2 to 3 ft.....75c

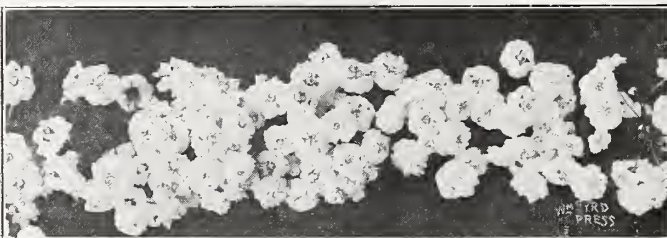


SPIREA ANTHONY WATERER.

SYMPHORICARPOS • Snowberry

S. racemosus. *Snowberry.* The pure white berry, as large as a cranberry, is the ornamental feature of this plant. Best used in groups. Each.
 2 to 3 ft.....50c
 3 to 4 ft.....75c

S. vulgaris. *Indian Currant.* Also best used in masses, to show off its clusters of small red berries, of which there is an abundance. Has a graceful pendent habit. Each.
 2 to 3 ft.....50c
 3 to 4 ft.....75c



SPIREA PRUNIFOLIA, Fl.-Pl.

Our Landscape Department
 Is at Your Service.



PERSIAN LILAC.

SYRINGA • Lilac

The very fragrant flowers and the attractive foliage have made this a very great favorite for many years. The lilac can be used as a specimen plant, or in masses, or even for hedges. Prune after flowering and then remove old wood only.

S. Josikæa. *Hungarian Lilac.* Valued for the lateness of its flowers, which are light violet in color. 3 to 4 ft. Each, \$1.00

S. Persica Rothomagensis. *Rouen Lilac.* The deep purple blossoms are borne in loose panicles in great quantities. Plant has a very graceful habit. 3 to 4 ft. Each, 75c

S. villosa Emodi. The white or pale lilac flowers are borne in narrow spikes and they come after all other Lilacs have passed. 3 to 4 ft. Each, 75c

S. vulgaris. *Common Lilac.* The old standby in the gardens of our grandfathers and just as good now as it was then. 3 to 4 ft. Each, 75c

S. vulgaris alba. *White Lilac.* Except that it has white flowers, it is the same as the preceding. 3 to 4 ft. Each, 75c

FRENCH LILACS

These Lilacs, so named, are improved forms of *Syringa vulgaris*, the only difference being that they have larger or double flowers and a variety of shades of color.

Charles X. Deep purple flowers, tinted red, borne in large spikes. 2 to 3 ft. Each, \$1.25

Mme. Lemoine. Beautiful double white. 2 to 3 ft. Each, \$1.25

Marie Legrave. An excellent single white. 2 to 3 ft. Each, \$1.25

Rubra de Marley. Deep lilac; one of the best. 2 to 3 ft. Each, \$1.25

Souvenir de Ludlow Spaeth. Single, very dark purple. 3 to 4 ft. Each, \$1.25

Large specimens of the above five varieties— Each, \$3.00 to \$5.00.

Five Ready Made Special Offers

The "CORNER GROUP" of Selected Flowering Shrubs, \$13.00

Following is a selection of 37 plants which we believe would be entirely satisfactory and pleasing to a majority of people; to be used as a compact group for the corner of lot or building. The taller kinds (marked "T") should naturally furnish the background, against either the wall or fence; the medium growers (marked "M") should come next; with the dwarf growing sorts (marked "D") as an outside border.

2 Lilacs (T).....	See page 19	4 Deutzia Gracilis (D).....	See page 13
2 Viburnums (H).....	" " 20	4 Hydrangea P.G. (M).....	" " 15
2 Forsythias (T).....	" " 14	5 Symphoricarpus Vulgaris (M).....	" " 18
4 Weigelas (M).....	" " 20	5 Spirea Callosa Alba (D).....	" " 18
4 Spirea Van Houtte (M).....	" " 18	5 Berberis Thunbergi (D).....	" " 11

37 First-Class Shrubs for \$13.00

FOUNDATION PLANTINGS

We receive a great many appeals for advice as to what would plant advantageously against the house foundations. We are, therefore, submitting the following arrangements for location in the full or partial sunlight, and for the shaded sides as well. Your own good judgment will adjust the matters of basement windows, and expansion or contraction of intervals according to size of house.

"Shady Side"

A	— or —	B	
3 Snowberry	} Back Row.....	{ 3 Hydrangea "Hills of Snow".....	} Either "A" or "B"— the 14 Shrubs for \$5.50
3 Indian Current			
4 Barberry Thunbergi	{ 4 Spirea Callosa Rosea.....		
4 Deutzia Gracilis Rosea			

"Sunny Side"

C	— or —	D		
} Either "C" or "D"— the 14 Shrubs for \$6.50	} 3 Viburnum Cassinoides ...	} Back Row.....	} 3 Spirea Van Houtte	
				} 3 Weigela Rosea
		} 4 Hydrangea P.G.		
				} 4 Deutzia Lemoinei.....



VIBURNUM PLICATUM, Standard Form.

TAMARIX · Tamarisk

- T. *Africana*. The light airy foliage and pink blossoms of this shrub make it a decidedly attractive plant to have in the border. Flowers in June.
3 to 4 ft.....Each, 60c
- T. *Hispida. aestivilis*. Similar to above except that it flowers later in the summer. Rose pink blossoms.
3 to 4 ft.....Each, 75c

VIBURNUM · Snowball

The most common one is the old-fashioned Snowball. There are others; all are very attractive, and the colored fruits add value.

- V. *La-tago*. An upright shrub; fruit blue black; white flowers in May and June.
3 to 4 ft.....Each, 50c
- V. *Lataza*. A pretty shrub; flowers white in May and June, followed by showy clusters of bright red fruit. Each.
3 to 4 ft.....Each, 50c
- V. *Cassinoides*. Upright shrub; flowers flat, 3 inches across, white, followed by red fruit; blooms in June. Each.
3 to 4 ft.....Each, 50c
- V. *dentatum Arrow-wood*. Upright, bushy shrub with bright green foliage which in autumn turns to rich bronze or deeper shades. Bluish black fruits.
3 to 4 ft.....\$.75
5 to 6 ft.....2.00
- V. *Opulus High-bush Cranberry*. The white flowers come in May and later their place is taken by red fruits in bunches. They are borne in clusters.
3 to 4 ft.....\$.50
5 to 6 ft. specimens.....2.00

- V. *Opulus sterile. The Snowball*. A sterile form of the preceding, and the common Snowball of the gardens of our grandmothers. The flowers are produced in large globular clusters. 3 to 4 ft.....Each, 50c
- V. *plicatum. Japanese Snowball*. Similar to the preceding in flower and preferred by some. The habit of the plant is more compact and the rugged, green foliage very attractive. It remains in bloom longer.
3 to 4 ft.....Each, 75c
- V. *Wrightii*. The brilliant red fruit of this Viburnum is its chief attraction. It, too, has white flowers in a broad panicle. Each.
3 to 4 ft.....\$1.00
5 to 6 ft., specimen plants.....3.00

WEIGELA · Diervilla

What a quantity of bloom these beautiful shrubs add to spring's floral display! They are necessary for shrubbery borders, large or small; their pretty flowers, resembling in form the honeysuckle, come in long sprays. Prune early in the summer to secure good flowering wood for the following spring.

- W. *amabilis variegata*. The bright variegation in the leaves and the pink blossoms of late May make this very desirable for border planting. Each.
2 to 3 ft.....60c
3 to 4 ft.....75c
- W. *candida*. Attractive foliage and pure snowy white blossoms. 3 to 4 ft.....Each, 50c
- W. *Eva Rathke*. Rich, deep scarlet. Blossoms a week after the other kinds. Each.
2 to 3 ft.....\$.75
3 to 3½ ft.....1.50
- W. *rosea*. The rose-flowered kind, grown for years and still a most worthy kind. 3 to 4 ft.....Each, 50c



WEIGELA ROSEA.



Foundation planted with assorted small evergreens planted by us, photographed immediately after planting.

Broad-Leaved Evergreen Shrubs

The evergreen shrubs make a brave display in winter, when the landscape is almost shorn of its beauty.

Often this period of the year is overlooked in the landscape planting, but when such pleasing results can be obtained as these shrubs create, one should not neglect to have some of them.

They produce cheerful effects during the winter period, and the growing season finds their glossy leaves vying with those of the deciduous shrubs for first place in the grower's heart.

A deep, cool, moist soil with proper drainage is ideal and a shaded situation is often preferable, as bright sunlight during the winter months is liable to injure the foliage of some of them.

ABELIA

A. *grandiflora rupestris*. 5 to 6 ft. Beautiful glossy foliage and, where protected in the North it is evergreen. The small waxy white flowers are slightly tinted pink.

3-year plants.....Each, 75c

ANDROMEDA CATESBAEI · Lencothoe

Large glossy green leaves; graceful arching branches; white flowers resembling Lily of the Valley; blooms in may.

1½ to 2 ft.....Each, \$2.50

AZALEA

A. *Amoena*. A charming little evergreen kind, producing an abundance of rich wine-colored flowers completely covering the plant with flowers. Foliage always attractive, perfectly hardy.

12 to 15 in.....\$2.00

1¼ to 1½ ft.....3.00

1½ to 2 ft.....5.00

A. *Hinodegira*. Another evergreen variety with double bright red flowers, free bloomer and taller growing than the Amoena.

1 to 1¼ ft.....Each, \$3.50

BOXUS · Box

The dark green, glossy foliage of the Box has gained for it thousands of admirers, and it well deserves the distinction. No other plant equals the *B. Suffruticosa* as a low edging plant. The

pyramidal and tree-form styles are particularly adapted to formal work; also for hedges, growing more rapidly than *Suffruticosa*.

B. *Arborescens*. *Tree Box*. Tall, open, natural growing variety. Each.

2 to 2½ ft.....\$6.00

2½ to 3 ft.....8.00

B. *Sempervirens*. *Bush Form*.

Each. Ten. 100.

5 to 6 inch.....\$ 25 \$2 00 \$18 00

18 to 22 inch.....2.50 20.00

22 to 24 inch.....5.00

24 to 26 inch.....7.50

B. *Pyramidal Form*. Each.

3 ft. specimens.....\$ 8 00

3½ ft. specimens.....10.00

B. *Standard*. 2 to 2½-ft. stems, 12 ins. across, Each

.....\$10.00

B. *Rutundifolia*. Broad-leaved box. Bush form.

1¼ to 1½ ft.....\$2.50

1½ to 2 ft. specimens.....4 00

2 to 2½ ft. specimens.....6.00

B. *Rutundifolia aurea*. Golden leaf box.

12 to 18 inch bush shape.....Each, \$3.75

B. *Suffruticosa*. Dwarf box edging. Ten. 100.

3 to 4 in. high.....\$2 50 \$15 00

4 to 6 in. high.....3.00 20.00

BARR'S EVERGREENS. Have you ever considered the splendid color effect that can be gained from the intelligent use of evergreens? Our Landscape Department will be glad to advise you and show you just how to obtain the most from evergreen colors. A rough sketch of your place, with relation to the points of the compass (giving size of lawn, all directions, together with photo, if you have one) will bring full information as to how to plant.



MAHONIA.

COTONEASTER

C. Horizontalis. A dwarf evergreen shrub with spreading branches, bearing small pink flowers followed with red berries; fine for borders or rockeries. Each.

6 to 8 inch, 4 yrs. old.....	\$1.00
12 by 12 inch, 5 yrs. old.....	1.50

MAHONIA · Grape

M. aquifolium (Berberis) Oregon Grape. Bright glossy green, holly-like leaves that persist during the winter. In the autumn they turn to rich red and bronze shades. Attractive yellow flowers are borne in April. Set in deep, rich soil that is shaded. Each.

18 to 24 inch.....	\$2.00
2 to 2½ ft.....	3.00

RHODODENDRON

The Rhododendron, when properly used, gives effects which cannot be secured by any other class of plants. Is there a shaded corner about the place, or is the north side of the house occupied? Such a position would be ideal for the Rhododendron, but the bed must be prepared with care. Woodland and natural plantings may frequently be improved by these glorious plants. Good plants and intelligent preparation of the bed will insure good results. Spend a little time on it, and your extra care will be paid for. It is permanent results you are seeking.

Making a Rhododendron Bed. In making a Rhododendron bed, dig out the soil to a depth of about 4 ft. and fill in the bottom with about 2 ft. of broken stone or similar material. Finish with good top soil; leaf-mould is better if it can be procured. Should the soil be heavy, add a proportion of sand to lighten it. Good drainage is essential. Provide a mulch by covering the top of the ground with a liberal amount of well-rotted

stable manure. Such a bed will be cool and moist all the time, reproducing the conditions under which the plants thrive so wonderfully with only the care Dame Nature gives them. Do not make the common mistake of digging the soil in an established bed, as the Rhododendron is a surface-rooting plant and suffers from this disturbance.

CHOICE HARDY HYBRIDS

Named Varieties in Red, Crimson, White, Pink and Purple.

2 ft.....	Each, \$5.00	2½ ft.....	Each, \$6.00
-----------	--------------	------------	--------------

NATIVE RHODODENDRONS

Native varieties grow larger than the Hybrid sorts, perhaps not as free-blooming; their usual colors are pink, lavender, and white. We offer Catawbiense and Maximum. Each.

2½ to 3 ft.....	\$4.00
3 to 3½ ft.....	5.50
Specimen plants	10.00

Car-load lots, price on application.

YUCCA · Adam's Needle

Y. filamentosa. Adam's Needle. Unique and desirable in most plantings. It is also indispensable for the rockery. Each.

4-yr. plants	\$.75
Extra large plants.....	1.00

PACHYSANDRA TERMINALIS

Japanese Spurge

Splendid ground cover in dry or moist locations, sun or shade. Forms a dense carpet.

4 to 6 inch.....	Per ten, \$2.00
------------------	-----------------

KALMIA LATIFOLIA · Mountain Laurel

Dark green foliage; showy masses of pink flowers in June. Each.

18 inch.....	\$2.25
24 inch.....	3.00

Six plants of the same variety at five times the price of one.

SPECIAL OFFER

2 Globe Arborvitae.....	12 inch
2 Pyramidal Arborvitae.....	18 inch
2 Golden Cypress.....	15 inch
2 Mughus Pine.....	12 inch

The above 8 fine shaped trees for \$10.00 postpaid.

What's the Matter?

It all depends on your frame of mind. When one is in a wrong frame of mind, it is equally difficult to plan and plant a garden as it is to do any other work when we are out-of-sorts. The problems of garden planting and building are many and various, and we are often ready to ask ourselves what is the matter. Give us a rough sketch of your grounds. Our Landscape Division will be pleased to tell you what is the matter and how to correct it.



Just imagine how much the evergreens add to the appearance of this suburban home. Many homes could be thus decorated. Only evergreens can give the richness and air of refinement, both winter and summer. Think of the enjoyment the owner of this place derives. We planned and planted the above, and will do the same for you if given the opportunity.

Coniferous Evergreens

When it comes to planting about the home, some wonderfully fine effects can be made by using the different varieties of Evergreens. There are kinds that reach 75 feet in height with pointed tops, like Douglass Spruce, or the Firs, Hemlock, and the Pines. Most of these trees are very dark green. Large spaces are required for these trees. In small lawns medium-sized Evergreens are needed. Blue Spruce, Retinospora, Junipers and the Arbor Vitae are adapted to such planting. In smaller lawns, as well as larger ones, there are opportunities for lining walks, and making borders and beds of Evergreens. No other kind of planting is more attractive to you, who live in the home, than a low hedge of Evergreens surrounding your lawn. It gives your home a cheerful appearance in winter, as well as in summer.

A bed of Evergreens is a wonderfully attractive thing. In it you can plant the golden Arbor Vitae, Retinosporas, Junipers, the bluish-tinged Spruces, Firs, and Cedars, and the dark and light-green Spruces, Pines, Firs, and Hemlocks, all contrasting splendidly with each other and with their surroundings. All the year round such a bed will attract attention. If you have an unsightly bank, cover it with dwarf or trailing Junipers.

FOUNDATION PLANTING. Nooks and corners about the foundations and in front of the porch planted with Evergreens produce a cheerful approach in winter when all vegetation is asleep. We suggest the Retinosporas, Arbor Vitae, Junipers and Taxus for this purpose, and will be well pleased to suggest suitable varieties for the foundation of your home or any part of your grounds.

Our Evergreens are carefully dug with a ball of soil and baled in burlap (see cuts on page 22). This is done so that the roots are not disturbed. To obtain the best result, the roots of an Evergreen should never be exposed to the sun or wind. In planting Evergreens, firm the ground thoroughly when setting the plant, which should be put about two inches deeper than it grew in the nursery. Water very thoroughly after they are planted. They should also be watered at intervals during the summer until well established in their permanent quarters. All Evergreens baled and burlaped at prices quoted.

All Evergreens thrive best in rich soil. Use bone meal or well-rotted manure if soil is poor, but never use fresh manure.

All our Evergreens are carefully dug with ball of earth, and burlaped, assuring safe transplanting, at prices quoted.

ABIES • The Firs

White Fir. *Abies Concolor.* Beautiful, soft silvery foliage, very hardy. Not particular as to soil.

	Each.
1½ to 2 ft.....	\$ 2.50
2 to 2½ ft.....	4.50
2½ to 3 ft.....	6.00
4 to 5 ft.....	12.00
5 to 6 ft.....	\$15.00 to 20.00

Nordman Fir. *Abies Nordmanniana.* Glossy, dark green foliage, rich in color as old Boxwood. Use as a specimen or group with pines and spruces.

	Each.
1½ to 2 ft.....	\$ 2.50
2 to 2½ ft.....	3.50
2½ to 3 ft.....	6.00
3 to 4 ft.....	8.00
4 to 5 ft.....	11.00

BIOTAS • Chinese Arborvitae

Chinese Arborvitae. *Biota Orientalis.* A pyramidal growing tree, pleasing light lustrous green color changing to rich bronze in winter. Valuable in group planting. Occasional trimming will keep them compact and symmetrical.

	Each.	Ten.
1 to 1½ ft.....	\$1.00	\$ 8.00
1½ to 2 ft.....	2.00	18.00
2 to 2½ ft.....	2.50	22.50
2½ to 3 ft.....	3.00	27.50
3 to 4 ft.....	5.00	—

Chinese Golden Arborvitae. *Biota Elegantissima.* Habit same as above, except that it grows more compact and has very attractive bright golden foliage.

	Each.
1½ to 2 ft.....	\$3.00
2 to 2½ ft.....	4.00
2½ to 3 ft.....	5.00
3 to 3½ ft.....	7.00



KOSTER'S BLUE SPRUCE.



DOUGLASS SPRUCE.

Chinese Dwarf Golden Arborvitae. *Biota Nana Aurea.* Very dwarf, especially desirable for foundation planting where space is small.

	Each.
8 to 10 in.....	\$1.50
12 to 15 in.....	2.50
15 to 18 in.....	3.50

CRYPTOMERIA

Cryptomeria Japonica. Rare and unusual trees from Japan, of pyramidal habit, light green foliage.

	Each.
3 to 4 ft.....	\$6.00
4 to 5 ft.....	8.00
5 to 6 ft.....	10.00

JUNIPERUS • The Junipers and Cedars

The great American Cedar, while more difficult to transplant than other Evergreens they are "as hardy as rocks." Green, yellow, and silvery hues characterize their color. Some are dwarf with spreading habits, while others columnar, making them suitable for every purpose.

Chinese Juniper. *Juniperus Chinensis.* Dark green, columnar habit, growth very dense.

	Each.
2 ft.....	\$4.00
3 ft.....	5.00
4 ft.....	6.00

Six Evergreens of the same variety supplied at five times the price of one, where Ten rates are not quoted.

Pfitzer's Juniper. *Juniperus Fitzeriana.* A wide growing and very graceful evergreen. Foliage bluish green, spreading habit. One of the best for ground cover. Will grow upright if trained.

Each.	
1 ft. high, 1 ft. spread.....	\$2.00
2 ft. high, 2 ft. spread.....	3.50
2½ ft. high, 2¼ ft. spread.....	5.00
3 ft. high, 2½ ft. spread.....	7.00

Stricta Juniper. *Juniperus Stricta Glauca.* Dwarf bluish-green, cone shaped, pyramidal habit, especially adapted for growing in tubs or formal purposes.

Each.	
1 ft. high, cone shaped.....	\$1.50
1½ ft. high, cone shaped.....	2.50

Douglas Golden Juniper. *J. Canadensis Aurea.* A low spreading form with golden foliage that turns bronze in winter.

Each.	
1½ ft. high, 18 to 24 in. spread.....	\$3.00

Blue Virginia Juniper. *J. Virginiana Glauca.* Delightful silvery blue foliage. Tall and slender habit; very hardy.

Each.	
2 ft.....	\$3.50
3 ft.....	5.00
4 ft.....	7.50
5 to 6 ft.....	9.00

Schott's Juniper. *Juniperus Schottii.* A narrow growing form of rich green color and compact foliage.

Each.	
3 ft.....	\$5.00
4 ft.....	7.00

Irish Juniper. *Juniperus Hibernica.* Columnar and compact in habit, very useful in formal work. Foliage bluish green.

Each.	
18 in.....	\$2.00
2½ ft.....	2.50
3 ft.....	3.00

Japanese Juniper. *Juniperus Japonica Aurea.* A handsome spreading variety; beautiful golden color the entire year.

Each.	
2 ft.....	\$2.50
2½ ft.....	4.00

J. Swedish. *Suecica Juniper.* Tall columnar habit. Compact grower.

Each.	
2 to 2½ ft.....	\$2.50



NORWAY SPRUCE.

Golden Virginia Cedar. *J. Virginiana Elegantissima.* A golden form of upright growth.

Each.	
3 to 3½ ft.....	\$6.00

Tamarix-leaved Juniper. *J. Tamariscifolia.* Close trailing Juniper of great value in planting banks, rock-gardens, etc.

Each.	
8 to 10 in high, 12 in. spread.....	\$2.50

PICEA • Spruce

Tall-growing evergreens of beautiful form, and very necessary in securing many effective landscape results. They mature quickly and live to a good old age.

Pyramidal Spruce. A compact dark green spiral-shaped tree for formal use.

Each.	
2 to 3 ft.....	\$2.50
3 to 4 ft.....	4.00

Engelman's Spruce. *Picea Engelmanni.* Form pyramidal, and its growth compact; foliage, bluish, but softer than that of *P. Pungens*. Very desirable for ornamental planting.

Each.	
1 to 1½ ft.....	\$1.25
1½ to 2 ft.....	3.00
2 to 3 ft.....	4.00
3 to 4 ft.....	5.00

Douglass Spruce. *Picea Douglassi.* Hardy as a stone, whether it be subjected to low temperature or high cold winds. Its feathery branches are almost as graceful as those of the Hemlock. Always, winter and summer, a good live green.

Each.	
12 to 18 in.....	\$1.50
1½ to 2 ft.....	2.50
3 to 4 ft.....	5.00
4 to 5 ft.....	7.50
5 to 6 ft.....	9.00
6 to 7 ft.....	12.00



RETINOSPORA.

Coniferous Evergreens

B. F. BARR & CO., LANCASTER, PA.

Colorado Blue Spruce. *Picea Pungens.* Silvery blue sheen, of vigorous growth and elegant habit with broad branches. Hardy in any exposure. Not so highly colored as Koster's Blue Spruce. Each. Ten.
 2½ to 2 ft. \$ 5.00 \$40.00
 3 to 4 ft. 6.00 50.00
 4 to 5 ft. 8.00 65.00
 5 to 6 ft. 10.00 90.00

Koster's Blue Spruce. *P. Pungens Kosteriana.* The best Blue Spruce obtainable, and looked upon as the very choicest evergreen grown. It is valuable for individual planting; very hardy and thrives in any soil. Each.
 1½ to 2 ft. \$ 4.00
 2 to 2½ ft. 5.00
 2½ to 3 ft. 6.50
 3 to 3½ ft. 8.00
 3½ to 4 ft. 10.00
 4 to 5 ft. 15.00

Norway Spruce. *Picea Excelsa.* This familiar spruce is more generally used than any of the others. It is a rapid grower; does well in most soils. As a hedge plant it is probably unsurpassed by any other evergreen, being hardy and making a dense, impenetrable hedge. Often planted as a windbreak or a screen. Each. Ten.
 1½ to 2 ft. \$ 1.00 \$ 8.00
 2 to 3 ft. 2.00 18.00
 3 to 4 ft. 3.00 25.00
 4 to 5 ft. 4.00 35.00
 6 to 7 ft. 6.25 —
 7 to 8 ft. 10.00 —

Oriental Spruce. *Picea Orientalis.* An aristocrat. Erect-growing, fine form, with smaller and glossier foliage than the Norway Spruce. Each.
 1½ to 2 ft. \$ 3.00
 2 to 3 ft. 4.00
 3 to 4 ft. 6.00
 4 to 5 ft. 8.00
 5 to 6 ft. 15.00

PINUS • The Pines

The Pines endure a wide range of climatic conditions. They are natives of lowlands and mountainous regions, and withstand well the cold, bleak winds to which they are subjected. They are mostly of upright habit, growing rapidly, and not particular as to soil. Pines are very ornamental and useful on lawns and public grounds. They are so diverse in character that species may be selected for even the smallest area as well as for vast estates. In groups, shelter belts or as tall screens their value is highly appreciated.

Austrian Pine. *Pinus Austriaca.* A tall, massive tree, with spreading branches, heavily plumed with long, stiff, dark green needles. Each. Ten.
 12 to 18 in. \$1.25 \$10.00
 1½ to 2 ft. 2.00 18.00
 2 to 3 ft. 3.00 25.00
 3 to 4 ft. 5.00 40.00
 4 to 5 ft. 7.00 65.00

Himalayan Pine. *Pinus Excelsa.* Needles long, silvery blue, and plummy in effect. These Pines grow naturally into symmetrical specimens. Each. Ten.
 3 to 4 ft. \$5.00 \$45.00
 4 to 5 ft. 7.00 —
 5 to 6 ft. 12.00 —

Dwarf Mountain Pine. *Pinus Mughus.* In time it makes a very compact, globular tree of pleasing form. Highly desirable. Each. Ten.
 10 to 12 in. high, 1¼ to 1½ ft. spread \$2.50 \$22.50
 1 to 1¼ ft. high, 2 to 2½ ft. spread 3.00 27.50
 1½ to 2 ft. high, 2 to 2½ ft. spread 4.00 37.50

Scotch Pine. *Pinus Sylvestris.* Is much planted because of its silvery-colored leaves and hardy, robust growth. Each. Ten.
 18 in. to 2 ft. \$1.00 \$ 8.00
 2 to 3 ft. 2.50 21.00
 3 to 4 ft. 4.00 37.50
 4 to 5 ft. 5.00 47.50
 5 to 6 ft. 7.50 —

White Pine. *Pinus Strobus.* One of the most stately, beautiful and valuable of our native evergreens. Tall and straight, with slender, glaucous foliage somewhat tufted at the ends of the branches; an extremely graceful tree. Fine for planting along boundary of woodland, growing into money as well as adding to the woodland's beauty. Each.
 4 to 5 ft. \$4.00
 5 to 6 ft. 5.00

Red Pine. *Pinus Resinosa.* Habit similar to the White Pine, with longer needles. Thrive equally well in shade as full sun. One of the best of our native large growing pines. Each. Ten.
 18 to 24 in. \$1.25 \$10.00
 2 to 3 ft. 3.00 —
 3 to 4 ft. 4.00 —



WHITE FIR. ABIES CONCOLOR.



PINUS MUGHUS, DWARF MOUNTAIN PINE
(see page 26).

Japanese Black Pine. *Pinus Thunbergii.* Dark rich green under the most trying circumstances. A very picturesque typical to most Japanese trees.
 Each.
 2½ to 3 ft.....\$3.00
 3 to 3½ ft..... 4.00

RETINOSPORA : Japanese Cypress

The different varieties vary in their general appearance and character. All of them can be clipped sufficiently to maintain any desired size or shape. For this reason, they are especially well adapted for foundation planting about porches, their coloring is attractive at all seasons. They are just as useful in grouping, window boxes, vases and individual specimens.

Blue Japanese Cedar. *Retinospora Squarrosa.* Always greatly admired because of the rich, bright, steel-blue foliage. A thrifty, compact grower.
 Each.
 2 to 2½ ft.....\$3.50
 2½ to 3 ft..... 4.00
 3 to 3½ ft., wide specimens 5.00
 4 to 5 ft., wide specimens 6.00

Green Japanese Cypress. *Retinospora Plumosa.* Soft, plummy foliage of a rich green shade. Always needed in selections.
 Each. Ten.
 10 to 12 in.....\$ 1.00 \$ 8.00
 1½ to 2 ft..... 2.00 18.00
 2 to 3 ft..... 3.00 27.50
 3 to 4 ft..... 3.50 29.00
 4 to 5 ft..... 4.00 32.00
 5 to 6 ft..... 5.00 _____
 6 to 7 ft..... 6.00 _____
 7 to 8 ft..... 10.00 _____

Silver-tipped Japan Cypress. *R. Plumosus var. Argentea.* The ends of all the branches are silver tipped. Very odd and beautiful, especially desirable, when small, for filling vases and window boxes.
 Each. Ten.
 1½ to 2 ft.....\$2.50 \$21.00
 2 to 3 ft..... 4.00 34.00

Golden-Plumed Cypress. *Retinospora Plumosa Aurea.* Foliage similar to the one above but golden yellow in color. One of the most popular *Retinospora.*
 Each. Ten.
 10 to 12 in.....\$ 1.00 \$ 8.00
 1½ to 2 ft..... 2.00 18.00
 2 to 3 ft..... 3.00 27.50
 3 to 4 ft..... 4.00 37.50
 4 to 5 ft..... 5.00 47.50
 5 to 6 ft..... 7.00 _____
 6 to 7 ft..... 8.00 _____
 7 to 8 ft..... 10.00 _____
 8 to 10 ft..... 20.00 _____

Hinoki Cypress. *Retinospora Obtusa.* Rich, bright green leaves of great beauty, arranged in a somewhat crested form. Very hardy and a most desirable kind.
 Each.
 1½ to 2 ft.....\$3.00
 2 to 3 ft..... 4.00
 3 to 4 ft..... 6.00

Crippsi Cypress. *Cripps' Golden Cypress.* Dwarf crested; upright habit; the most beautiful golden *Retinospora.*
 Each.
 1½ to 2 ft.....\$3.50
 2 to 2½ ft..... 5.00

White-Tipped Retinospora. *R. Squarrosa var. Sulphurea.* A variety similar to *R. Squarrosa.* It is a slower grower and of more dwarf habit. The color is of a lighter shade of blue. Fine for a low hedge; can be kept in any desired shape by shearing.
 Each Ten.
 2 to 3 ft.....\$3.50 \$32.50
 3 to 4 ft..... 4.50 42.50

Sawara Cypress. *Retinospora Pisifera.* Tall and pyramidal in habit. A splendid rich green color. One of the hardiest in this class; great favorite.
 Each. Ten.
 2 to 3 ft.....\$3.75 \$34.00
 3 to 4 ft..... 4.75 45.00
 4 to 5 ft..... 6.00 _____
 5 to 6 ft..... 8.00 _____
 6 to 7 ft..... 10.00 _____

Golden Sawara Cypress. *R. Pisifera Aurea.* A golden leaved form of above, which is very rich and ornamental. It makes a charming specimen.
 Each. Ten.
 1½ to 2 ft.....\$2.00 \$18.00
 2 to 3 ft..... 3.75 35.00
 3 to 4 ft..... 4.75 45.00
 4 to 5 ft..... 6.00 57.50
 5 to 6 ft..... 8.50 82.50

Thread-Branched Japan Cypress. *R. Filifera.* A tree of very elegant appearance with bright green foliage. It is globular in outline, and particularly graceful on account of the ends of its shoots drooping in long filaments. Very distinct.
 Each. Ten.
 1½ to 2 ft.....\$2.50 \$20.00
 2 to 3 ft..... 4.50 40.00
 3 to 4 ft..... 7.50 65.00
 4 to 5 ft..... 11.00 95.00

Golden Thread Branch Cypress. *R. Filifera Aurea.* A golden-leaved form of above, which is very rich with its thread-like gold foliage.
 Each.
 1½ to 2 ft.....\$2.50
 2½ to 3 ft..... 4.50
 3 to 4 ft..... 6.00

All Evergreens should be thoroughly watered and sprayed with a full force of water from the hose during the hot summer months and late fall, before freezing weather, especially the first season after planting.



ARBORVITAE.

TAXUS · Yew

The Yews would always be favorites, even without any Old World associations. They will thrive best in partly shade. Try them on the shady side of your house. There are many varieties, among which we recommend the following:

Japanese Yew. *T. Cuspidata.* The rich dark green foliage is typical of this family. It makes really a bushy shrub. The hardiest of all Yews. Rather rare. Each. Ten.

1 to 1½ ft.....	\$3.00	\$25.00
1½ to 2 ft.....	5.00
2½ to 3 ft.....	6.00

Dwarf Japanese Yew. *T. Brevifolia.* Especially desirable for a low foundation planting. Very dwarf in habit; dark green and very hardy.

	Each.	Ten.
6 to 8 in.....	\$2.00	\$17.00
1 to 1½ ft.....	5.00	40.00
1½ to 2 ft.....	6.00

Spreading Yew. *T. Baccata repandens.* For a rich, handsome ground cover nothing can excel this species. Just the thing for the edge of foundation planting on the north side of the house and shady places. Each. Ten.

8 to 10 in. high.....	\$3.00	\$27.50
12 in. high, 1½ to 2 ft. spread..	4.00
12 in. high, 2 to 2½ ft. spread..	6.00

Canadian Yew. *T. Canadensis.* Low spreading growth, one of the few evergreens that thrive best under partial shade of trees or buildings. Try a few in groups in a shady location where other evergreens fail. Each.

1½ ft. high, 12 to 15 in. spread.....	\$3.00
1½ to 2 ft. high, 18 to 20 in. spread.....	4.00

THUYA · Arborvitae.

Highly ornamental trees, some varieties upright habit, others ball shaped; thus they are appropriate for small lawns as well as large areas. Their clean, neat, compact appearance and the soft golden and different shades of green foliage, in many cases so brightly colored, make them useful in grouping, bedding, bordering and formal gardening, for cemetery and lawn specimens, for hedges, screens, window boxes, vases, and foundation planting. When so used for hedges they make a splendid background for other ornamental plants and provide protection for the flower and vegetable garden.

American Arborvitae. *T. Occidentalis.*

	Each.	Ten.
1½ to 2 ft.....	\$1.25	\$10.00
2 to 3 ft.....	2.00	17.00
3 to 4 ft.....	2.50	20.00
4 to 5 ft.....	3.50	30.00
5 to 6 ft.....	4.50

Globe Arborvitae. *T. Globosa.* A perfect little globe. Very desirable for bedding and formal use. Good for either side of path at special points. Light green foliage. Each. Ten.

10 to 12 in.....	\$1.00	\$ 8.00
1 to 1¼ ft.....	1.75	15.00
1¼ to 1½ ft.....	2.50	20.00
1½ to 2 ft.....	3.50	30.00

Hovey's Arborvitae. *T. Hoveyi.* Similar in habit but somewhat stronger in growth than the former, and has darker green foliage. Fine for window boxes and dwarf hedges.

	Each.	Ten.
6 to 10 in.....	\$.75	\$6.50
10 to 12 in.....	1.00	9.00
12 to 18 in.....	1.50	12.50

THE HOME SURROUNDINGS. What constitutes home surroundings is a matter of personal taste. A planting may be equally correct either as a single tree, shrub or plant, or as a group. But the right plant to use, or the right group of plants to use, is a question upon which our landscape department stands ever ready to serve you. Do not make the mistake of using the wrong plant or tree.

THE DREAM GARDEN. You have no doubt often dreamt of the garden you would like to have and care for. Making a real garden come true is a matter of selection. The finest products of the world's richest agricultural county are obtained from Barr's Nurseries. Consult our Landscape Department—we are always glad to offer suggestions free of charge to those who have new grounds to lay out or old ones to improve. A charge is made to cover cost of making plans, traveling, etc., which is credited when order is placed with us.

Peabody's Golden Arborvitae. *T. Occidentalis Aurea.* Bright yellow overlies the green foliage. Tall and columnar in habit and valuable in grouping with green kinds. Each. Ten.
 12 to 18 in.....\$1.50 \$12.00
 1½ to 2 ft.....2.00 18.00
 2 to 3 ft.....3.00 26.00

Ellwenger's Arborvitae. *T. Ellwengerii.* Soft, green foliage, resembling the Retinosporas. Each, \$2.50.
 18 to 24 in.....

Lee's Golden Arborvitae. *T. Elegantissima.* A new pyramidal variety of special merit; golden green color; compact habit, and very hardy. Each. Ten.
 12 to 18 in.....\$1.25 \$10.00
 1½ to 2 ft.....2.00 17.50
 2 to 2½ ft.....2.50 22.50
 2½ to 3 ft.....3.00 27.50
 3 to 4 ft.....4.00 37.50

Siberian Arborvitae. *T. Sibirica.* Very satisfactory dwarf evergreen specimen, semi-pyramidal in habit. The foliage remains a rich, dark green all year. Exceedingly hardy. One of the most useful. Each. Ten.
 12 to 18 in.....\$1.00 \$ 8.00
 1½ to 2 ft.....2.00 18.00
 2 to 2½ ft.....3.00 27.50
 2½ to 3 ft.....3.50

Pyramidal Arborvitae. *T. Occidentalis Pyramidalis.* Upright pyramidal habit. A great improvement over American Arborvitae; as it is more dense in foliage and retains a darker green color during the winter. No doubt one of the best arborvitae for general purposes.

	Each.	Ten.	100.
12 to 18 in.....	\$1.00	\$8.00	\$70.00
2 to 3 ft.....	2.25	18.00
3 to 4 ft.....	3.50	32.00
4 to 5 ft.....	4.00	37.50
5 to 6 ft.....	5.00

TSUGA • Hemlock

Hemlock Spruce. *T. Canadensis.* One of the best and most graceful evergreens. For specimen planting or use in evergreen groups, it is unsurpassed, and also for natural plantings. It is one of the few Evergreens that thrive in partial shade, when supplied with sufficient water.

	Each.	Ten.
12 to 18 in.....	\$1.50	\$12.50
1½ to 2 ft.....	2.00	17.50
2 to 3 ft.....	3.00	27.50
3 to 4 ft.....	4.00	37.50
4 to 5 ft.....	5.00	47.50

BARR'S TREES. The planting of a tree is a ceremony that carries with it some real sentiment. Someone has said that it takes a great man to make a tree grow, but any fool can cut it down. The planting of a tree, when the right tree has been used, is the prophecy of great pleasure in its shade, or in full enjoyment of its color and shape, or many other joys that are attendant from watching it grow and develop into a thing of beauty. Trees have a mission in this world that cannot be described through the medium of words. They must be seen to be appreciated. That you may make no mistake in the selection of the right tree, see that they come from Barr's Nurseries.



VIEW IN OUR NURSERY.

Note symmetrical and perfect shaped trees. Koster's Blue Spruce on the right; Retinospora Squarrosa in center; Retinospora Plumosa Aurea on the left.

ROSES FOR THE GARDEN

Barr's Selected Hardy Roses

The name of the Rose is an inspiration to garden-lovers, and they are permanent guests in your garden or about your home. We take great care to include in our list only such varieties as are worthy of general cultivation, and are hardy. No other family of plants have in the same genus so many different types and species as has the rose, and we dare say no other plants receive so much admiration. Plant life of all kinds are known the world over to develop to the highest state of perfection in the rich soil of Lancaster County. ROSES are no exception. We offer only home grown, acclimated plants, that are sure to succeed wherever they are planted.

Culture. In preparing your rose-bed spade up the soil to the depth of eighteen inches, incorporating bone meal, and well rotted manure. If the soil is heavy, use six inches of broken stone or rough ashes in the bottom of the bed to insure good draining. All roses object to wet feet. A top-dressing of bone meal or manure twice a month during the growing season will improve both flowers and fragrance.

When to Plant. We recommend spring planting. The plants offered are started in pots, and ready to plant April 15th to July 1st. We guarantee every plant we send out. We offer also a list of dormant plants if ordered prior to March 1st. List price on application.

Location. Roses require a good warm location and plenty of sunshine. In late fall hill up the earth eight inches high around the plants, adding three inches of manure.



The Glory of Blooming Roses encircling the garden walk in June—a joy not soon forgotten.

Hybrid Tea Roses

The following list represents very careful selections. The range of color is complete, hardy, and true to name, monthly bloomers.

American Beauty. Very large and fragrant. Rather delicate; rich crimson.

Caroline Testout. Satiny pink, very large flowers. Excellent habit.

Duchess de Wellington. Intense saffron-yellow, changing to a coppery yellow as the flowers develop.

Gruss an Teplitz. Medium size, intense scarlet-crimson. Strong grower, sweet scented and persistent bloomer.

Georgeous. Buds coral-red, shaded with yellow and rose; very beautiful.



MY MARYLAND.

Hoosier Beauty. Rich dark red, fine bedder, and very hardy and fragrant.

Hadley. Darkest velvet color, fragrant and free flowering.

Jonkeer J. L. Mock. Greatly improved La France, imperial pink; wonderful keeping qualities. The flowers are of large size, perfect form and highly perfumed.

Killarney Queen. Deeper pink than Killarney, producing strong stems and long pointed buds.

Killarney White. White, slightly tinted pink, long pointed buds, free bloomer, and no doubt one of the best white roses.

Kaiserine Augusta Victoria. Soft pearly white. Very fragrant and productive.



HOOSIER BEAUTY.

Lady Hillington. Beautiful coppery shade of apricot-yellow, pointed bud, very free flowering.

Lady Pierre. Deep copper reddish-salmon, flushed fawn and copper.

Laurent Carle. Large, sweet scented brilliant carmine.

Lyon Rose. The long buds are tipped coral-red and chrome-yellow at the base; very fragrant.

My Maryland. Very free bloomer; flowers large and double; color bright salmon pink.



JONKEER J. L. MOCK.

Roses for the Garden

B. F. BARR & CO., LANCASTER, PA.

Mrs. Aaron Ward. A remarkable floriferous variety of strong, vigorous, but compact, dwarf growth, pointed bud, full double flowers when open. Color a distinct Indian yellow, shaded lighter towards edges.

Mrs. Charles Russell. Long pointed buds, dark rose-pink, one of the best keepers. Very fragrant and beautiful.

Madam Christy Miller. Exquisite silvery pink, one of the best varieties.

Ophelia. Delicate shade of salmon-yellow, shaded with rose, floriferous and beautiful.

Radiance. An ideal bedding variety of remarkable free flowering habit, of a brilliant rose-pink. One of the best garden roses; good keeping qualities.

Red Radiance. Rosy-crimson, vigorous and productive, except color same habit as Radiance.

Rhea Reid. Strong grower, and prolific bloomer, carmine rose color. Should be in every collection.

Sunburst. A superb rose, of good, vigorous habit; buds long, cup shaped. Color a rich yellow with orange-yellow center.

Willowmere. Coral-red color, suffused with carmine in bud state, and opens to a large full flower of a rich shrimp-pink.

Wm. R. Smith. Creamy-white with rose shadings. Long pointed buds and an excellent bedder.

Any of the above strong one-year plants, 40 cts. each, \$3.20 per 10. Strong two-year-old potted plants, except where otherwise noted, from five and six-inch pots, \$1.00 each, \$8.40 per 10.



GRUSS AN TEPLITZ ROSES.

Hybrid Perpetual Rose

The following is the cream of a long list of June roses, most of which bloom twice and three times during the summer.

Frau Carl Druschki. Pure white.

General Jacqueminot. Brilliant scarlet-crimson.

Mrs. R. G. Sharman-Crawford. Deep rosy pink.

Mrs. John Laing. Soft pink.

Paul Neyron. Dark rose; one of the best.

Ulrich Brunner. Bright cherry-red; very large.

Any of the above strong one-year-old potted plants, 40 cts. each, \$3.20 per 10. Strong two-year-old potted plants, except where otherwise noted, from five and six-inch pots, \$1.00 each, \$8.40 per 10.

YOUR GARDEN

Every one of us desires a garden, and in order to get the greatest pleasure from our garden it is well to know the proper location and method of planting for each and every tree, shrub or plant that we set out. We are glad to help you with your garden. Write our Landscape Division.

SPECIAL OFFER

12 Selected 2-year Plants—Six Best Garden Roses.

2 Jonkeer L. Mock	2 White Killarney
2 Gruss an Teplitz	2 Rhea Reid
2 Ophelia	2 Radiance

12 Two-year Plants by express \$10.00

12 One-year Plants, parcel post mailing size, prepaid 4.00

All guaranteed to grow and bloom.

Hardy Climbing Roses

Desirable for covering trellises, terraces, walls, or porches, as they succeed under almost all conditions.

American Beauty Climbing. New climbing form of the famous pink rose American Beauty; deep rosy carmine; double.

American Pillar. Single-flowering variety of great beauty; pink flowers borne on immense bunches.

Christine Wright. Wild rose pink; large semi-double blooms.

Climbing Orleans. Improved crimson climber, with better foliage and very double.

Dorothy Perkins. Rapid growth, shell pink; very double and fragrant.

Gardenia, Hardy Marchael Neil. Rich buff-yellow when in bud. Strong grower, glossy foliage.

Hiawatha. Deep ruby crimson, small flowers, large clusters.

Dr. W. Van Fleet. Large flowering rose, 4 inches across, full and cup-shaped; color flesh pink; fragrant and free from insects.

Philadelphia Rambler. Similar to, but a little darker and better than Crimson Rambler.

Thousand Beauties (Tausendschon). Fragrant, semi-double, various shades of pink.

Silver Moon. Extra large silvery white; single flowers, fine heavy foliage.

Yellow Rambler. Attractive semi-double yellow flowers.



HIAWATHA CLIMBING ROSE.

Any of the above strong one-year-old plants, 40 cts. each, \$3.20 per 10. Strong two-year-old potted plants, except where otherwise noted, from five and six inch pots, \$1.00 each, \$8.40 per 10.



FRAU CARL DRUSCHKI.

Dwarf Hybrid Monthly Baby Roses

Baby Rambler. Crimson, covered with a wealth of crimson flowers all summer.

Baby Thousand Beauties. Pink, covered with a wealth of pink flowers all summer.

Baby Elger. Yellow, ever-blooming, yellow sweethearts all summer.

Any of the above strong one-year-old potted plants, 40 cts. each, \$3.20 per 10. Strong two-year-old potted plants, except where otherwise noted, from five and six inch pots, \$1.00 each, \$8.40 per 10.

SPECIAL OFFER

- 1 Jonkeer J. L. Mock, imperial pink.
- 1 My Maryland, salmon pink.
- 1 Ophelia, salmon pink.
- 1 Hoosier Beauty, rich dark red.
- 1 Mrs. Aaron Ward, Indian yellow.
- 1 White Killarney.

The above 6 Grand Roses, strong one-year plants, \$2.00 postpaid. Guaranteed to flower this summer.

Hardy Vines and Climbers

On the home-grounds vines fill a distinct need. The pergola, the trellis, the fence, unsightly dead tree trunks or banks need covering. Wherever they can run or climb, vines will transform the place and beautify the surroundings to a degree greatly in excess of their cost.

Those in this list can be recommended without hesitation or explanation. They are all good, no uncertain ones included.

Potted Plants. For some years we have been growing many of our vines in pots, and those who have secured them in this form have been greatly pleased.

The roots are not disturbed on being planted out, so that quick returns from a vine are always assured. They can be planted at any time.

The Best Climbing Vines. For walls, arches, and other surfaces the most satisfactory are the *Ampelopsis Veitchii*, Euonymus, Trumpet Vines, English Ivies.

Rapid-Growing Vines. To shut out objectionable views or produce shade the following are desirable: Dolichos, or Kudzu, Honeysuckles, and Virginia Creeper.

Quantities of less than 5 plants of one variety are sold at Single rates.

AMPELOPSIS · Ivy

A. Veitchii. *Japanese Ivy.* Self-climber. Very well known best of all deciduous vines for clinging to walls of buildings, etc. Rich crimson foliage in the fall is greatly admired. Each. Ten.

Potted plants.....\$.35 \$2.80
Strong 2-yr. potted plants..... .50 4.00

A. Lowii. A new Japanese variety possessing all the good qualities of the popular Japan Ivy. The foliage is deeply cut and smaller, giving it a beauty not possessed by any other variety. Each. 2-year potted plants.....80c

A. Virginiana (quinquefolia). *Virginia Creeper.* "Five-fingered" leaves. Clings to trees, walls and sandy banks. Very graceful and most desirable for natural effects. Hardy, fast grower. Potted 2-year plants.....Each, 50c
Small plants " 35c

ARISTOLOCHIA · Dutchman's Pipe

A. Siphon. *Dutchman's Pipe.* Dark, broad, rich green leaves. The flowers are shaped much like a pipe. One of the best screening vines. Thrives in heavy soil and smoky localities. Large plants.....Each. \$1.50



HONEYSUCKLE.

BIGNONIA · Trumpet Vine

A glorious display of red and orange trumpet-shaped flowers may be expected from this vine. The best vine for covering old stumps or walls.

B. grandiflora. *Chinese Trumpet Vine.* The large orange-colored flowers of this vine are sometimes 4 inches across. Self-climber, and not so rampant of growth as the next one mentioned. Strong potted plants, 2-yr.....Each, 75c

B. radicans. *Common Scarlet Trumpet Vine.* It is not uncommon to see humming-birds visiting its flowers. Each. Large plants, 2 yrs. old.....75c

CELASTRUS · Bittersweet

C. scandens. *American Bittersweet.* The scarlet fruit pods are very handsome and showy. Good for covering banks and slopes, when creating natural effects. Each. Ten. Field grown plants, 2 to 3 ft.....\$.75 \$6.00

CLEMATIS

The Clematis is without doubt the most popular vine grown. There is great range in size and color of the flowers, and there are some very unique forms. When purchased, cut the vines off close to the ground and let them start over anew and there will be little or no trouble from Clematis stem rot.

C. coccinea. A herbaceous plant bearing scarlet, bell-shaped blossoms. It has very attractive foliage. Each. Ten. Potted plants\$1.00 \$8.00

C. paniculata. *White, Sweet-scented Clematis.* A very popular summer-flowering vine. The small, white starry blossoms are borne in profusion in July and Aug., followed by feathery seed. Each. Potted plants, 4-in. pots.....75c
Smaller size, 3-in. pots.....30c

LARGE-FLOWERING CLEMATIS

The large-flowered Clematis are very popular. We are selling only potted plants, eliminating to a great degree the danger of failure, which has been a great drawback to growing successfully the field-grown plants. Each. Strong potted plants, 2 yrs. old.....\$1.00

Henryi. Grand large single white.
Jackmani. Single purple, most commonly grown.
Madame Andre. Large, deep wine-red.

Six Plants of one variety sold at five times the price of one.

DOLICHOS · Kudzu Vine

D. Japonicus (Pueraria). *Japanese Kudzu Vine.* The fastest growing vine when established, making 12 and 14 inches a day. The rosy purple, pea-shaped flowers are borne in racemes in August.

	Each.	Ten.
Potted plants.....	\$.75	\$6.00

EUONYMUS

These are attractive evergreen vines, with small, neat foliage. The plant clings tightly to rough surfaces. These vines can be developed into bush form by a little pruning, and are highly valuable for edging evergreen beds for foliage contrasts.

E. radicans vegetus. *Evergreen Bittersweet.* So called because of its masses of red berries hanging to the vines in winter time. A most strikingly pretty decoration on walls or trees. This plant is destined to become exceedingly popular. It will not winter-kill like English ivy, in exposed places; will thrive in any location.

Small plants.....	40c
Strong 2-year plants.....	75c

E. radicans variegatus. *Variiegated-leaved Euonymus.* Unusually pretty foliage, variegated white and green. Pot-grown.....Each, 35c

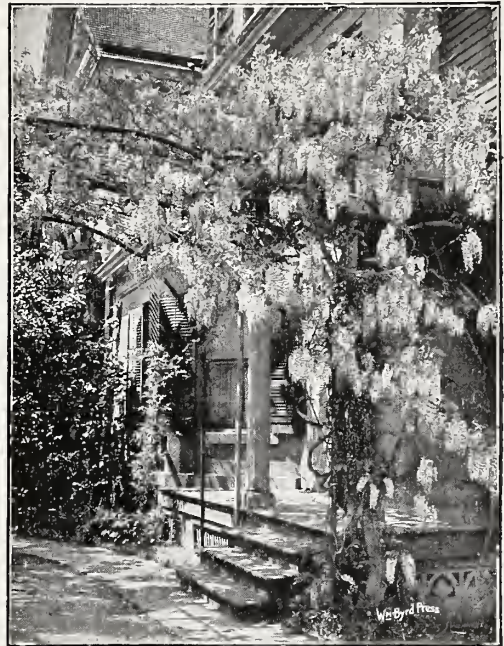
HEDERA · English Ivy

H. Helix. *English Ivy.* Very attractive effects are possible with this glossy, green-leaved vine, with its foliage remaining summer and winter. It is suitable for a north wall or where it does not get the continual rays of the sun, or under trees.

	Each.	Ten.
3 in. pot plants.....	\$.25	\$2.00
4 in. pot plants.....	.50	4.00



CLEMATIS PANICULATA.



WISTARIA SINENSIS.

LONICERA · Honeysuckle Vine

The exquisite fragrance of the Honeysuckle flowers and the pleasing foliage make them great favorites. The trellis, porch, fence, pergola, bank, and many other places can be made attractive with them. Our potted plants will quickly produce results.

- L. Halliana.** The rapid-growing Japanese Honeysuckle. Beautiful light green foliage, and many creamy white, fragrant blossoms all summer. Pot-grown, 4-in. pots.....Each, 50c
- L. sempervirens.** *Red Coral Honeysuckle.* Large fleshy leaves, and beautiful blossoms about 2 inches long. Red berries follow the flowers. Pot-grown, 4-in. pots.....Each, 50c
- L. Sinensis.** *Chinese Honeysuckle.* Foliage of a reddish green color. Flower buds red, white on the inside. Pot-grown, 4-in. pots.....Each, 50c

LYCIUM · Matrimony Vine

L. barbatum. *Matrimony Vine.* Produces grand display in the fall with its scarlet berries. Excellent for covering banks.

2-year plants	Each, 50c
---------------------	-----------

WISTARIA

When well grown and producing a good crop of bloom, the Wistaria is a very beautiful vine. It is especially desirable for trellises, pergolas, and for covering old tree trunks.

- W. frutescens.** *American Wistaria.* Flowers later than the *W. Sinensis*, and the lilac-purple flowers come in dense racemes; dark green foliage. Pot-grown.....Each, \$1.00
- W. Sinensis.** *Chinese Purple Wistaria.* What can be more beautiful than this lovely vine with its drooping racemes of fragrant, rich blue flowers? Pot-grown.....Each, \$1.00
- W. Sinensis alba.** *Chinese White Wistaria.* Decidedly beautiful, white-flowering variety of the one above. Pot-grown.....Each, \$1.00

Old-Fashioned Hardy Garden Flowers

In planting up your home grounds, you should not overlook the old-fashioned flowers that were extensively used in the old-time garden. When once planted they continue to bloom, and increase in beauty each succeeding year. You can use them planted in groups in front of your Shrubbery border, or you can line them along your walks, arranging them in a manner so that there will be something blooming all the time. If you have a large lawn, by all means have a flower garden laid out in beds and planted with these old-time favorites. You will enjoy them the entire summer. You will always be able to have flowers for your table in fine assortment. There is nothing finer that blooms than the gorgeous Peonies. Our three-acre plot, composed of more than fifty varieties, when in bloom is a sight worth going many miles to see. Visitors are always welcome, but in Peony time we surely offer a treat. The beautiful German and Japanese Iris are a good second in this class, followed by the Phlox with their bright colorings, which bloom at a time when other flowers are scarce. We can supply you with an assortment of Perennial flowers for a garden of any size. Our selection is the best it is possible to make. We have been collecting and propagating them for years that we might have a really complete list of choice kinds. The following is Barr's "Absolutely Genuine" list.

All Perennials, unless otherwise noted, 25 cents each; \$2.00 per 10 of one variety. Five of one variety at 10 rates. Quantities of less than 5 plants of one variety are sold at Single rates.

ACHILLEA. *Boule de Neige.* Dwarf compact grower; fine double white flowers in profusion all summer.....30c each; \$2.40 per 10.

AGROSTEMMA coronaria. *Rose Champion.* Velvety crimson. June and July. 1½ to 2 ft.

ALYSSUM saxatile compactum. Masses of canary yellow. April and May. 9 inch.

ANCHUSA Dropmorei. A new perennial of great worth. It has gentian-blue flowers, in long sprays, like the Larkspur. June and July. Each 3 to 4 ft.....35c

ANEMONE. *Windflower.* Flowers resembling a dainty, single rose. The Anemones are second to none for cutting.

A. Japonica alba. Beautiful, single, pure white.

A. Japonica, Queen Charlotte. Semi-double, silvery pink.

A. Rosea Suberba. Semi-double rose color. Extra fine variety.

Any of the above, 30c each; \$2.40 per 10.

AQUILEGIA. *Columbine.* Too well known to need much description.

A. Long spurred hybrids; various colors; April to June. 2 to 3 ft.....Each, 30c

ARABIS. *Rock Cress.* A fine rock-plant, covering the ground with flowers in early spring.



Six Plants of any one variety at five times the price of one, unless otherwise noted.



DIANTHUS, Sweet William. (See page 39.)

A great favorite among perennials in grandmother time, and just as popular now.

ARTEMISIA lactiflora. A beautiful flowering Artemisia, with erect stems $3\frac{1}{2}$ to $4\frac{1}{2}$ ft. high, clothed with elegantly cut dark green foliage and terminated by panicles of Hawthorn-scented creamy white Spirea-like light and graceful flowers. August to the end of September.....35c each; \$2.80 per 10.

ASCLEPIAS tuberosa. *Butterfly Plant.* 1 to $1\frac{1}{2}$ ft. Orange. July and August. Bright orange blossoms of great beauty and lasting quality. Each, 35c.

ASTER. *Michalmas Daisies.* The Michalmas Daisies are indispensable, because they bloom when the frosts have killed most of the other flowers.

A. amethystinus. $2\frac{1}{2}$ to 3 ft. Clear blue. September and October.

A. Novæ-Angliæ. *New England Aster.* $3\frac{1}{2}$ to 4 ft. Erect growth. Purple. September and October.

A. Novæ-Angliæ rosea. $3\frac{1}{2}$ to 4 ft. Rosy pink. September and October.

A. Novi-Belgii, "Robert Parker." $3\frac{1}{2}$ to 4 ft. Pale heliotrope. September and October.

A. Climax. Light blue. Most showy of all hardy Asters.....Each, 30c; \$2.40 per 10.

AGERATUM. Blue. An exceedingly beautiful perennial when in bloom, being at its best during August and September, when outdoors flowers are scarce. Fine for cut flowers. The plants grow about 2 ft. in height.

A. White. Similar in growth and habit to the Blue variety, with the exception that it is of taller growth; the flowers are white, and are fine for bouquets. Flowers in September.

BAPTISIA australia. *False Indigo.* 2 to 3 ft. Blooms in May and June. Blue. The attractive blue pea-shaped flowers are borne in short spikes. Will stand partial shade.....Each, 30c

BOCCONIA cordata. *Plume Poppy.* A unique plant, well adapted for shrubby beds or to plant where a bold group is wanted. White flowers in loose plumes.

BOLTONIA. *Starwort.* Resembles the Asters. Excellent for massing.

B. glastifolia asteroides. 5 to 6 ft. White. August and September.

B. latisquama. 5 to 6 ft. Pink. August and September.

CAMPANULA. *Bellflower.* A hardy garden is incomplete without a collection of these charming perennials.

C. Medium calycanthema alba. *Cup-and-Saucer,* or *Canterbury Bell.* $1\frac{1}{2}$ to 2 ft. Biennial. Assorted colors. June and July.....Each, 30c

Your Garden

Everyone of us desires a garden, and in order to get the greatest pleasure from our garden it is well to know the proper location and method of planting for each and every tree, shrub or plant that we set out. We are glad to help you with *your* garden. Write our Landscape Division.



CAMPANULA MEDIUM.

All Perennials, unless otherwise noted, 25c each. Five of the same variety, \$1.00.



CHRYSANTHEMUM, OCONTO.

- C. Medium *calycanthema cærulea*. 1½ to 2 ft. Blue. June and July.....Each, 30c
- C. Medium *calycanthema rosea*. 1½ to 2 ft. Rose. June and July.....Each, 30c
- CENTAUREA Montana.** *Perennial Cornflower.* Good foliage; large flowers. Blue. June to September.....Each, 30c
- CERASTIUM Tomentosa.** *Snow in Summer; Mouse Ear.* Silvery foliage, valuable in rockeries and borders.....35c each; \$2.50 per 10.
- CHELONE.** *Turtlehead.* Valuable late flowering plants, doing best in partly shaded places, and being most at home in swampy ground. Rose purple.....Each, 30c

HARDY CHRYSANTHEMUMS

Do not confound these with the large-flowered varieties you buy in the florists' shops. These are hardy ones for the border where they will bloom until very severe frosts have finally killed them.

Our collection consists of many varieties, of every conceivable form and shade of color, so that we have every reason to believe that we have the finest collection in the country.

- Brown Bessie. Deep bronze aster type.
- Buckingham. Old rose.
- Daisy Anderson. Pink.
- Excelsior. Deep yellow aster type.
- Indian. Indian red.
- Jules LaGrave. Large garnet aster type.
- Lillian Doty. Large incurved pink.
- Skibo. Golden yellow, button type.
- Western Beauty. Deep rose pink.

25c each; \$2.00 per 10 of any one variety.
Five at 10 rates.

Special Offer

READY-MADE PERENNIAL GARDEN

- 5 Sweet Williams, assorted colors.
- 5 Hardy Chrysanthemums, assorted colors.
- 10 Hardy Phlox, assorted colors.
- 3 Paeonies, 1 each White, Pink, Red.
- 4 Gaillardias.
- 5 Iris, assorted colors.
- 5 Delphinium, Larkspur.
- 5 Digitalis, assorted colors.
- 5 Pysostegia.
- 3 Hollyhocks, assorted colors.
- 5 Columbine, assorted colors.

50 Choice Perennials.....\$10.00
Sufficient to plant a Border
4 feet wide, 16 feet long.

EARLY LARGE-FLOWERING CHRYSANTHEMUMS

These are not quite as hardy as the Pompons varieties. The following list includes the best and hardiest of this type. For the best results they should be disbudded.

- Glory of Pacific. Large, early pink.
- Polly Rose. Large, extra white.
- Unaka. Large, early pink.
- Richmond. Large, early yellow.
- McNeiss. Large, early pink.
- Oconto. Large, early white.
25c each; \$2.00 per ten.
- CONVALLARIA.** *Lily-of-the-Valley.* The best plant to grow in the shaded spot.
Clumps.....35c each; \$2.80 per 10.



ASTER. (See page 55.)

All Perennials, unless otherwise noted, 25 cents each. Five of the same variety, \$1.00.

COREOPSIS. The yellow, cosmos-like blossoms come in profusion all summer.

C. lanceolata grandiflora. 1½ to 2 ft. Yellow. June to September.

DIANTHUS. *Scotch Pink* and *Sweet William*. Old-fashioned garden plants.

D. barbatus. *Sweet William*. 1 to 1½ ft. Various colors. May to July.

D. plumarius diadematis. *Scotch Pinks*. 9 in. Semi-double, clove-fragrant flowers in all colors. May and June.

DICENTRA Spectabilis. *Bleeding Heart*. Early spring flower, that is most useful for cutting....50c each; \$4.00 per 10

DELPHINIUM. *Larkspur*. One of the finest sights of modern gardens is a good collection of blooming Larkspurs. Good for cutting.

D. Gold Medal Hybrids. 2 to 2½ ft. Flowers in varying shades of blue, violet and white.

D. formosum. 3 ft. Indigo. A favorite shade. June to August.....Each, 25c

D. Belladonna. 3 ft. The freest and most continuous bloomer of all; clear turquoise-blue.....Each, 25c

DICTAMNUS. *Gas Plant*. A tall, old-time perennial, forming dense clumps of dark green, glossy foliage and splendid flowers.

D. Fraxinella. 1 to 2 ft. Red. May to July.....Each, 35c

D. Fraxinella alba. White flowers, otherwise the same as aboveEach, 35c



DELPHINIUM, LARKSPUR.



GAILLARDIA, BLANKET FLOWER.

DIGITALIS. *Foxglove*. Partial to a cool, somewhat shaded position. Attractive old garden favorite. Flowers in showy spikes. Mixed colors.

DORONICUM plantagineum. *Leopard's Bane*. Large yellow daisy-like blossoms in early spring. Fine for cutting, each flower lasting an unusual length of time. Each, 30c

FUNKIA. *August*, or *Plantain Lily*. The Day Lilies are very odd, both in flowers and foliage, and thrive well in damp and partially shaded places, but will succeed in almost any locality.

F. cærulea. 1½ ft. Neat foliage. Blue. July and August.

F. subcordata grandiflora. 1½ to 2 ft. Large leaves and very large white flowers. A famous door-yard plant. August and September.....Each, 35c

GAILLARDIA. *Blanket Flower*. No plant in the hardy flower-garden gives more satisfaction than the Gaillardia. It flowers in great profusion nearly all summer long. The long, dry spells affect it very little.

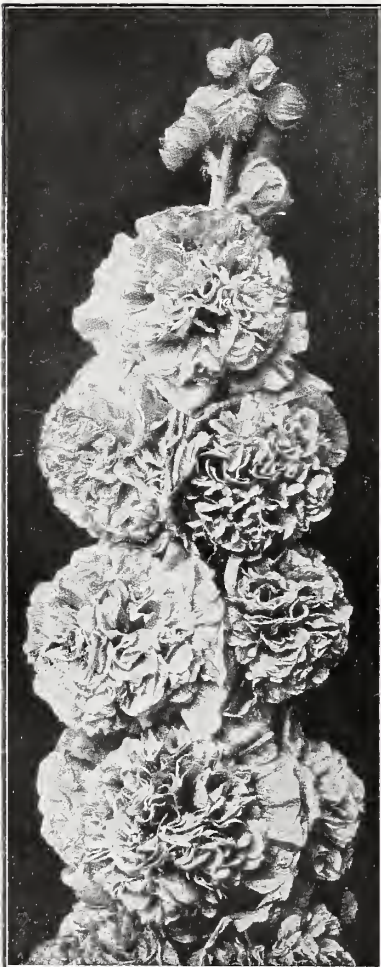
G. grandiflora compacta. 1½ ft. Crimson and yellow. Curiously striped "daisies." July to September.

All Perennials, unless otherwise noted, 25c each. Five of the same variety, \$1.00.

- GYPSOPHILA.** *Baby's Breath.* Loose, feathery white flowers, highly suitable for bouquet purposes. Fine for mixing with sweet peas. July and August.....Each, 35c
- HELENIUM** *Riverton Gem.* Strong grower, 2½ to 3 ft. high. Covered from the middle of August to the end of October with brilliant gold, terra-cotta flowers, changing as they mature to a wallflower red. 30c each; \$2.40 per 10.
- HELIANTHUS.** *Perennial Sunflower.* The perennial Sunflowers, without exception, are good for cut-flowers. They have not the large, coarse heads of the common, annual Sunflower.
- H. laetifolius.** Large single yellow flowers with downy foliage. 4 to 5 ft. Blooms August and September.
- H. Maximiliani.** 6 ft. Excellent for fall decorations. Long sprays studded with flowers. Single yellow. September and October.
- HELIOPSIS.** *Ox-Eye.* Heliopsis is much like the perennial sunflower. It blooms for a long period in mid-summer when flowers are scarce. Good for cutting.
- H. Pitcheriana.** 3 to 4 ft. Orange. June to August.
- H. Gratiissima.** 2 to 2½ ft. One of the finest yellows. A showy plant for the garden or for cut-flowers. Each, 35c

Do You Get the Maximum Pleasure and Profit From Your Garden?

If not, it is because you have not properly planted it. To know just when and what to plant is not always the knowledge of the amateur. Our many years of experience with all sorts of soils and under all kinds of climatic conditions have given us a knowledge, of which, if you will avail yourself, will be of the greatest assistance to you in getting the maximum of pleasure and profit from your garden. Write our **Landscape Division.**



HOLLYHOCKS.

- H. Zinniflora.** (New Double.) Orange yellow; fine for the border; very showy. 2 to 3 ft. tall.....Each, 35c
- HEMEROCALLIS.** *Day Lily.* The Hemerocallis, or bronze and yellow Day Lilies, are among the most popular of hardy plants, and if all the kinds are planted, will give a succession of bloom all summer long. The long stems elevate the showy flowers well above the foliage. Do not confuse with Funkia.
- H. flava.** *Lemon Day Lily.* 1½ to 2 ft. A lovely flower, nicely formed, fragrant. Yellow. June.....Each, 30c
- H. Aurantiaca.** Large orange yellow flowers. 2 to 3 ft. June and July.....Each, 30c
- H. fulva fl.-pl., Kwanso.** 3 to 3½ ft. Bronze. Double. July and August.....Each, 30c
- H. Thunbergii.** 1½ to 2 ft. Narrow leaves. Later than all to flower. Yellow. July.....Each, 30c
- HEUCHERA Sanguinea.** *Alum Root.* Dainty little plants with the loveliest coral-like flowers imaginable. Very free flowering. Use in the rock-garden or semi-shaded spots anywhere.....Each, 35c
- HIBISCUS.** *Mallow.* Hibiscus is best adapted for planting in a damp place, along streams, or in positions where a large, showy plant is required.
- H., Red Marvels.** Bright red; very showy.
- H., Pink Marvels.** Soft shades of pink.
- H., White Marvels.** White and very pale-tinted kinds.
- Any of the above Marvels, 2-yr. roots, 50c each; \$4.00 per 10.
- HOLLYHOCK.** The stately Hollyhock is increasing in popularity. The Allegheny Strain has prettily fringed edges. It was in great demand when introduced a few years ago. We now have a good supply. All kinds flower from June to August and grow 6 to 8 ft.
- H., Double.** Rosette flowers in white, pink, red, maroon and yellow. Separate color.....30c each; \$2.40 per 10.
- H., Allegheny.** Beautiful flowers in all colors—not separate. 30c each; \$2.40 per 10.
- LAVANDULA vera.** *Lavender.* The Lavender bears those familiar fragrant spikes of flowers so useful for the linen closet. Gray, evergreen foliage.....30c each; \$2.40 per 10.

All Perennials, unless otherwise noted, 25 cents each. Five of the same variety, \$1.00.

IRIS · Flag, or Fleur-de-Lis

This flower has justly been called the "Poor Man's Orchid." It is extremely beautiful, and can be grown with great ease. No garden is complete without some, and to acquire the Iris habit is to assume a hobby that can be ridden to the heart's content.

Prices of all varieties, 25c each; \$2.00 per ten of one variety.

Aurea. Rich chrome-yellow. A very fine Iris.

Admiral Togo. White, faintly tinged lavender. Extra fine.

Darius. Rich canary yellow; falls lilac margined white.

Eclipse. Velvety claret red, shaded violet; throat markings gold.

Florentine Alba. Waxy white, tinted lilac. Early bloomer.

Gracchus. Crimson, reticulated white; fine early.

L'Innocence. Deep lavender standards; white falls.

Maori King. Golden yellow, margined velvety maroon gold.

Mme. Cherau. Pure white; irregular border clear blue. Tall.

Penelope. White, delicately veined reddish purple.

Kochii. Rich claret purple; handsome.

Rembrandt. Light lavender; falls deeper.

Tinnae. Deep ageratum blue.

Trautlieb. The nearest pink Iris, shaded lighter at base.

Five of one variety at 10 rates.

IRIS LAEVIGATA KAEMPFERI

Japanese Iris

Flower in July after the Fleur-de-Lis have long finished their bloom. They prefer moist situations, where they will develop flowers of great size and wonderful colors. It is useless to list them by their original Japanese names, the very spelling of which is an ordeal. Early, mid-season, and late varieties. You will be well pleased in any event. For your convenience we have listed these varieties by numbers.

Prices of all varieties, 35c each, \$3.00 per 10. Please order by number.

- No. 1. Light purple; 6 petals.
- No. 2. Purple center, white falls; 3 petals.
- No. 3. Yellow center, dark purple falls; 6 petals.
- No. 4. White and yellow, center and falls; 6 petals.



IRIS.

- No. 5. Yellow center, double white falls; 6 petals.
- No. 6. Yellow center, dark purple falls; 3 petals.
- No. 7. White center and falls; 3 petals.
- No. 8. Yellow center, red and white falls 6 petals.
- No. 9. Purple veined, white center and falls; 3 petals.
- No. 10. White veined, purple center and falls; 3 petals.
- No. 11. Dark purple; 6 petals.
- No. 12. Lilac center, veined blue, and white falls; 6 petals.
- No. 13. Dark purple, center veined white; 6 petals.
- No. 14. Yellow center, veined dark purple and white; 6 petals.
- No. 15. Blue, falls veined white; 6 petals.
- No. 16. Lilac center, purple veined falls; 3 petals.

Siberian Iris

- I. *Sibirica*. *Siberian Iris*. Just the Iris for moist situations. Foliage narrow; flowers, though small, come in abundance. Flowers rich blue. 30c each; \$2.40 per 10.
- I. *Sibirica orientalis*, "Snow Queen." Most enchanting, pure white.....30c each; \$2.40 per 10

THE BACKYARD FLOWER GARDEN. In every nook and corner, for the border or for the walk, Barr's Perennials and Evergreens are very useful. Consult our Landscape Department for information on the right use of all nursery products.

All Perennials, unless otherwise noted, 25c each. Five of the same variety, \$1.00.



LILIUM AURATUM.

(Lily)

Swaying their graceful heads in midsummer, filling the air with fragrance and producing wonderful effects, the charming American and Japanese Lilies fill a distinct place in the hardy garden of today.

Lilies should have a good, well-drained soil. Do not use fresh tank manure; it should be well-rotted and liberally mixed with sand and leaf soil. It is a good plan to surround each bulb with sand when planting.

- L. auratum.** *Gold-banded Lily of Japan.* Pure white with gold band. Huge flowers. 35c each; \$2.80 per 10.
- L. candidum.** *Madonna Lily.* The fine old Annunciation Lily with tall stems of fragrant, pure white. Tall. Very hardy and lasting. 30c each; \$2.40 per 10.
- L. speciosum magnificentum.** Bright, rich red. 30c each; \$3.00 per doz.
- L. speciosum album.** *White Japanese Lily.* All the Speciosums are lovely; flowers on branching stems, gracefully suspended. 35c each; \$2.80 per 10.
- LOBELIA cardinalis.** *Cardinal Flower.* 1½ ft. Most brilliant of all flowers. Might be termed "Hardy Scarlet Sage." Loves moisture. Bright scarlet spikes. August.....30c each; \$2.40 per 10.
- LUPINUS.** *Purple Lupine.* These are popular because of their bright display of color. Give fine effect massed in the border. May and June. Each, 35c.

LYCHNIS. This genus includes such old friends as the Mullein Pink, Ragged Robin, Maltese Cross, Scarlet Lightning, Flower of Jove and others. Reliable garden plants.

LYTHRUM *Salicaria roseum superbum.* 2 to 3 ft. Rose. July and August. 35c each; \$2.80 per 10

L. Salicaria roseum superbum. 4 to 5 ft. Rose. July and August.....35c each; \$2.80 per 10.

MONARDA didyma splendens. *Bergamot.* 2 to 3 ft. Bears curious-looking ragged flower heads. Scarlet. July and August.

MYOSOTIS palustris semperflorens. *Forget-me-not.* 6 in. Likes moisture. Blue. April to July.

Five Plants of the same variety supplied at four times the price of one, where 10 rates are not quoted.

SPECIAL OFFER

- 3 Gefion, peach blossom pink.
- 3 Rhynstrom, rose.
- 3 Mrs. Jenkins, white.
- 3 Wm. Ramsey, crimson.

The above 12 Choicest Phlox, \$2.50 postpaid.

Quakertown, Pa., Oct. 12, 1920.

B. F. Barr & Co.,
Lancaster, Pa.

Dear Sirs:—

Received the shipment of stock of you October 2nd and planted them on the following Monday.

The trees should grow successfully, as they arrived in excellent condition, and I had the service of an experienced man to plant them.

I am well pleased with the trees, and your plan makes a very pretty effect.

Respectfully,

CALVIN N. RUTH,

612 Juniper St., Quakertown, Bucks Co., Pa.

The Hardy Border

The old-fashioned garden or hardy border is deservedly the most popular of all ground plantings. Just what to plant and how to plant it, in order to keep a continuation of bloom from frost to frost, is one of the services that our Landscape Division is prepared to deliver. Among the best are the IRIS, PAEONIES, PHLOX, and CHRYSANTHEMUMS. All of these have become extremely popular in all sections of the country. They are also among the easiest perennials to grow. They are wonderfully beautiful in color, come in the season of the year when flowers are in most demand, and we have a list that is unsurpassed for quality. Let us tell you how to build your hardy border.

All Perennials, unless otherwise noted, 25 cents each. Five of the same variety, \$1.00.



PEONIES GROWING IN OUR NURSERIES. "THE QUEEN OF SPRING FLOWERS."

Barr's Fragrant Paeonies—The Queen of Spring Flowers

Everyone loves the Pæony. We can all recall the enthusiasm of our grandmothers over the garden "Piney." You can imagine the raptures, if those old people were brought in contact with the splendid Pæonies of to-day.

There was a time Pæony was common Piney. There are common ones to-day, but the later introductions are more in demand every year, displacing the old varieties that have done their duty, finer and better ones taking their place.

They require less care after planted than any other flower, but they will respond abundantly to good care and attention.

They should be planted $3\frac{1}{2}$ to 4 feet apart in good garden soil, and be set so as the eyes or crown will be from $2\frac{1}{2}$ to 3 inches below the surface. Mulch them in the fall.

We advise August, September and October as the best time to plant them, but they can also be planted in the early spring. We sell Pæonies only of our own growing, and not until they are tried out in our nursery, at least three years, and make no pretense to compete with those who have no stock of their own, but only buy and sell them again, with no assurance of their being true to name or quality.

The name and number following the variety indicates the introducer of that variety and the year it was introduced.

POPULAR AND INEXPENSIVE NAMED VARIETIES

Achille. Calot, 1855. Light, flesh colored pink, changing to bluish white; fine large blooms; profuse bloomer. Early.

Alexandre Dumas. Guerin, 1862. Lively, brilliant pink, interspersed with white, salmon and charmois. Early.

Baron J. Rothschild. Guerin, 1850. Outside petals rose, center salmon; fragrant. Mid-season.

Canari. Creamy white tinted yellow. Late.

Duchesse de Nemours. Calot, 1856. Sulphur white with greenish reflex fading to pure white. Early.

Duc de Wellington. Calot, 1859. Very large, well formed sulphur white bloom; habit ideal; strong grower; very fragrant. Early.

Edulis Superba. Lemon, 1824. Pink, slightly violaceous, intermixed with narrow whitish petals. Early.

Festiva Maxima. Miellez, 1851. Very large, shell formed bloom; color snow-white shading to delicate creamy white at base of petals; very fragrant. Early.

Gloire de Cheronceaux. Mechin, 1880. Large, very full satin pink flowers; lightly shaded with white. Late bloomer.

Golden Harvest. Pale lilac rose; center creamy white; fragrant; dwarf habit. Mid-season.

La Coquette. Guerin, 1861. Medium-sized bloom; color bright rose with creamy flesh and pink center. Late. Mid-season.

La Tulipe. Calot, 1872. Very large. Delicate rose fading to creamy white center petals tipped with carmine; outside of guard petals striped with carmine. Late.

Mme. Crousse. Calot, 1866. Color snow white, center petals edged with bright carmine. One of the finest. Mid-season.

Mme. de Vatry. Guerin, 1863. Guard clear flesh, center sulphur white with carmine stripes; of dwarf habits. Late. Mid-season.

Mme. de Verneville. Crousse, 1885. Very broad, guards sulphur white, center delicate rosy white with an accidental touch of carmine. Early.

Mme. Ducl. Mechin, 1880. Dwarf habit. Color bright silvery pink, tinted and marked with salmon and silvery reflex. Mid-season.

Marechal Vaillant. Very large, compact, globular, rose type. Dark mauve pink. Tall. Late.

President Roosevelt. Scarlet. Mid-season.

Solfarare. Calot, 1861. Large, compact, sulphur white, crown type, with milk white guard petals. Mid-season.

Souv. d'Exp. Universal. Lively rose. Good bloomer.

Umballata Rosea. Earliest of the Sinensis to bloom. Large rose type. Guards violet rose. Center shading white. Free bloomer. Very early.

Wilhelmina. Fine lavender rose; extra large. Mid-season.

Prices of Above Paeonies:

Division 2 to 3 eyes—50c each; \$4.00 per 10 of one variety.

Blooming size, Division 3 to 5 eyes—\$1.00 each; \$8.00 per 10 of one variety.

Five of one variety at 10 rate.

VARIETIES WITH SPECIAL MERIT

Couronne d'Or. Calot, 1873. Immense bloom; color snowy white with yellowish reflex with light carmine edges on a few center petals.

Edouard Andre. Mechin, 1874. Large bloom; deep crimson red shaded black, with metallic luster on the reflex of the petals. Strong grower. Mid-season.

Felix Crousse. Crousse, 1881. Large bloom, brilliant red with ruby flamed center; exceptionally bright, effective and desirable. Late mid-season.

General MacMahon. Bright red.

Lady Dartmouth. Eng. Hort., 1850. Beautiful pure white, very large.

Marie Lemoine. Calot, 1869. Enormous sulphur-white bloom shaded with pink and chamois; strong stems of medium height. Very late bloomer.

M. Jules Elie. Crousse, 1888. Petalage broad and overlapping, forming the most perfect paeony in existence; color the finest glossy flesh pink shading to deeper rose at the base. Mid-season.

Mme. Bacquet. Dessert, 1888. Very pretty. Color darkest velvety amaranth.

Princess Beatrice. Kelway, 1886. Pink guard petals, a few salmon; yellow petals with a large rose tuft in the center.

Rubra Superba. Richardson, 1871. Very large and full, dark velvety crimson. Late.

Triomphe de L'Exposition de Lille. Calot, 1865. Medium bloom; soft flesh pink with white reflex; very fresh coloring; compact. Late.

Prices of Above Paeonies:

Division 2 to 3 eyes—75c each; \$6.00 per 10 of one variety.

Blooming size, Division 3 to 5 eyes—\$1.25 each; \$12.00 per 10 of one variety.

Five of one variety at 10 rate.

SELECT VARIETIES WITH SPECIAL MERIT

Albert Crousse. Crousse, 1893. Immense convex, rose-shaped flowers, fresh salmon pink. Late.

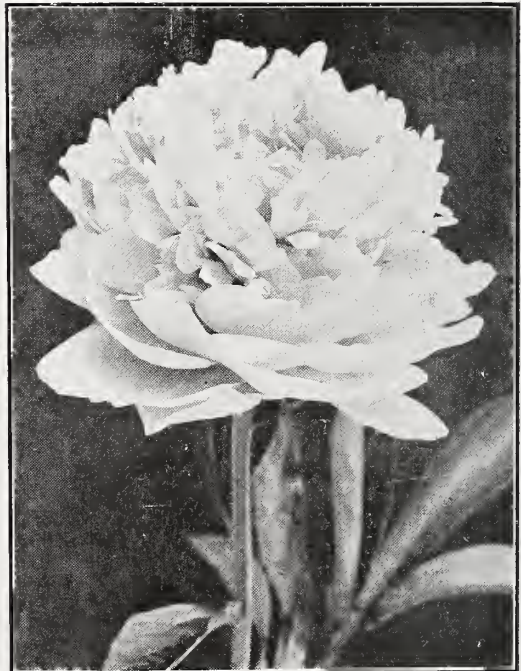
Asa Gray. Large, semi-rose type. Pale lilac, sprinkled with minute dots of deeper lilac. Medium. Late.

Cameron. Crousse, 1879. Large. Deep purplish red and wall flower colored, shaded with velvety hues. Late.

Duchess of Teck. Brilliant rose with fiery reflex, edges of petals changing to silvery white. Mid-season.

Gloire de Chas. Gombault. Gombault, 1866. Large, full deep fleshy pink color, center petals clear fleshy salmon color shaded apricot; tuft of broad petals, pink striped with carmine; multi-color variety. Mid-season.

Madame Emile Galle. Deep lilac-white, changing to milk in center. Late.



MME. BACQUET.



FESTIVA MAXIMA.

Modeste Guerin. Red, fragrant, medium height. free bloomer. Mid-season.

Prices of Above Paeonies:

Division 2 to 3 eyes—\$1.00 each; \$8.00 per 10 of one variety.

Blooming size, Division 3 to 6 eyes—\$1.50 each; \$12.00 per 10 of one variety.

Five of one variety at 10 rate.

CHOICE NEW AND RARE VARIETIES

Adolph Rouseand. D. & M., 1890. Deep purplish red. Tall. Early.

Albatre. Crousse, 1885. White, lightly shaded ivory carmine lines at the center. Extra. Mid-season.

Eugene Verdier. Calot, 1864. Salmon pink, changing to clear pink, nearly white. Mid-season.

George Washington. Uniform and dark crimson. Medium height. Mid-season.

Margaret Gerard. Crousse, 1892. Very pale hydrangea pink, fading to nearly white; center petal minutely flecked dark carmine. Medium height. Extra. Late.

Prices of Above Paeonies:

Division 2 to 3 eyes—\$1.50 each; \$12 per 10.

Blooming size, Division 3 to 5 eyes—\$2.00 each; \$16.00 per 10.

NEW AND RARE FRENCH VARIETIES

E. G. Hill. Lem, 1906. Uniform light Tyrian rose, dwarf compact grower; very showy. Extra. Mid-season.

Marie Crousse. Crousse, 1892. Large, globular, medium to loose bomb. Uniform pale lilac rose, tall, erect, strong grower and free bloomer. Extra. Mid-season.

Sarah Bernhardt. Flat, compact, semi-rose type. Uniform mauve rose. Silver tip. Fragrant. Erect, tall, free. Late.

Prices of Above Paeonies:

Division 2 to 3 eyes—\$4.00 each; \$32.00 per 10 of one variety.

Blooming size, Division 3 to 5 eyes—\$5.00 each; \$40.00 per 10 of one variety.

Five of one variety at 10 rate.

TREE PAEONIES

P. Moutan Banksii. These paeonics make woody stems that lengthen each year and eventually become bushes. Ours are strong healthy plants. The flowers are distinct from those of the herbaceous plants and vary in color. Bloom in May. \$3.50 to \$5.00 each.

SPECIAL OFFER

- 1 Festiva Maxima, white paeony.
- 1 Mons Jules Elie, largest pink paeony.
- 1 Edulus Superba, rose pink paeony.
- 1 Mad. Bucquet, red paeony.

The above 4 Choicest Paeonies, \$2.50 postpaid.



FELIX CROUSSE, One of the Best Red Paeonies.

OUR LANDSCAPE DEPARTMENT. The problems of planting the modest home garden, the large place, the gentleman's estate, a cemetery or a park, differ materially, but they are alike a place wherein our Landscape Department can be of service. We are always willing and ready to go anywhere or plan for any one with a view to securing satisfactory planting. Write us for full information.



HARDY GARDEN PHLOX.

PAPAVER. *Poppy.* The Oriental Poppy with its rich crimson flowers is one of the most gorgeous of our hardy perennials.

P. orientale. *Oriental Poppy.* 2 to 2½ ft. Huge scarlet flowers. June. 35c each.

P. orientale, Livermore. 2 to 2½ ft. Bloodred. June. 35c each.

P. orientale, Royal Scarlet. 2 to 2½ ft. Intense scarlet. June. 35c each.

PENTSTEMON Digitalis. *Beard Tongue.* 3 to 3½ ft. Resembles the Phlox. White. June and July.

P. Grandiflorus. Handsome showy flowers of lilac blue. 35c each, \$2.80 per 10.

HARDY GARDEN PHLOX

Phlox Decussata

For all-round reliability the Phlox is not outdone by any other hardy perennial.

There are varieties of the most vivid crimson, the clearest and softest shades of pink, clear mauves and purples, and snowy white.

Price of Phlox, except where otherwise noted, are 25c each, \$2.00 per 10 of one variety.

Five at 10 rates.

Annie Cook. Flesh pink.

Astara. Violet-purple, pure white center, petals undulated.

B. Compte. (Medium.) Brilliant French-purple, with crimson carmine shadings. 35c each, \$3.00 per 10.

Coquelicot. Fine pure scarlet. (Dwarf.)

Elizabeth Campbell. (Medium.) Very light salmon-pink, with lighter shadings and dark crimson eye. The most popular Phlox grown today. 35c each, \$3.00 per 10.

Fernand Cortez. (Tall.) Deep crimson with much darker center, giving a bronze effect. 35c each, \$3.00 per 10.

General von Heutz. Brilliant salmon. 35c each, \$3.00 per 10.

Independence. (Medium.) Large, pure white.

Jeanne de Arc. (Tall.) A good standard late white. 35c each, \$3.00 per 10.

Mme. Meuret. Flame color, carmine center. (Dwarf.)

Mme. Paul Dutrie. (Dwarf.) A delicate, lilac-rose, reminding one of some of the beautiful soft-pink Orchids. 35c each, \$3.00 per 10.

Mrs. Jenkins. (Tall.) The best tall early white for massing. 35c each, \$3.00 per 10.

Pantheon. Brilliant carmine-rose. (Medium.)

Pink Beauty. (Tall.) An enormous spike of beautiful pale pink flowers; very fine. 35c each, \$3.00 per 10.

Rheinlander. (Dwarf.) A most beautiful salmon-pink, with flowers and trusses of immense size. 35c each, \$3.00 per 10.

Richard Wallace. White, violet-carmine center. (Dwarf.)

Rynstrom. (Tall.) A great improvement on the popular variety, Pantheon; of the same carmine-rose color as the Paul Neyron rose. 35c each; \$3.00 per 10.

R. P. Struthers. (Tall.) Salmon pink with crimson center. 35c each, \$3.00 per 10.



SHASTA DAISY. (See page 47.)



HAMEROCALLIS AURANTIACA, DAY LILY.
(See page 40.)

- Thor.** (Dwarf.) A most beautiful and lively shade of deep salmon-pink, suffused and overlaid with a scarlet glow. 35c each, \$3.00 per 10.
- Tolstoi.** (Tall.) Coppery amaranth, carmine red reflex, and blood-red center. 35c each; \$3.00 per 10.
- Water Groff.** Fine tall salmon-pink; flowers profusely. 35c each, \$2.80 per 10.
- Wm. Ramsey.** (Medium.) A fine deep crimson.
- PHYSOSTEGIA Virginica.** *Obedient Plant.* The long-flowering spikes of this fine plant are fine for cutting purposes. Soft pink. 2 to 3 ft.
- PLATYCODON.** *Japanese Bellflower.* Have a very long flowering season, lasting from June to October. When in bud, the flowers look little like balloons. Very satisfactory perennial. 1 to 2 ft. Blue and White.....Each, 35c
- PRIMULA Primrose.** The English Primrose with its flowers of every color is a most pleasing border plant. A northern exposure with shade is best. Mixed colors.

- PYRETHRUM, fl.-pl.** *Feverfew.* 1½ to 2 ft. Double white button flowers. June to August.
- P. roseum.** 1 to 1½ ft. Very pretty daisy-like flowers. Unlike the preceding. Low foliage. Flowers on good stems. Single. In shades from red to white. June.....Each, 35c
- RUDBECKIA.** Very free flowering. Snowy blossoms, useful for cutting purposes.
- R. laciniata, Golden Glow.** 6 to 7 ft. flowers are double yellow balls. August and September.
- R. Newmani.** *Black-eyed Susan.* 1½ to 2 ft. The attractive yellow field daisy with brown eye. Orange. August and September.
- R. Subtomentosa.** A pyramidal densely-branched plant, 2½ ft. high, which is completely covered with brilliant-lemon flowers with dark purple centers. In bloom during August and September when flowers are scarce.
- R. Purpurea.** Giant purple. Cone flower. July and October.....Each, 25c
- SALVIA Azurea Grandiflora.** Growing 2 to 2½ feet, producing during August and September, sky-blue flowers in profusion. 25c each; \$2.80 per 10.
- SHASTA DAISY.** 1½ to 2 ft. A Burbank production of merit. Large, white. June to September.
- SEDUM Album.** White stone crop. July and August.....Each, 25c
- S. Kamschaticum.** Orange stone crop. Flowers in flat clusters. July and August. Empire yellow.....Each, 35c
- S. spectabilis.** *Live-Forever* or *Showy Sedum.* 1 ft. Broad, succulent, gray-green leaves, crowned with bright pink flowers, nicely blending. August and September. Good for bordering beds.



PRIMULA, ENGLISH PRIMROSE.

All Perennials, unless otherwise noted, 25 cents each. Five of the same variety, \$1.00.

SPIRÆA. Spireas are all partial to moist places, though such a situation is not necessary for their success. They have loose, feathery flowers, useful for cutting.

S. palmata elegans. 2 to 2½ ft. Superior foliage, pink. June and July.

THERMOPSIS. A very choice, pleasing plant. Upright spikes of yellow, pea-shaped blossoms. Might be termed "Yellow Larkspur." Stands drought very well indeed.

T. Caroliniana. 3 to 4 ft. Yellow. June. 35c each

TRITOMA. *Red-hot Poker.* The most curiously formed head of flowers in cultivation. Flamboyant is a very good description of the flower-heads. July to October. 35c each, \$2.80 per 10.

TROLLIUS. *Globe Flower.* Dwarf, with flowers like huge buttercups.

T. Asiaticus. 1 ft. Orange. May. 30c each.

VALERIANA officinalis. *Hardy Heliotrope.* 2 to 2½ ft. Has a peculiar strong fragrance. Rose-pink. June and July. 35c each.

VERONICA longifolia subsessilis Hendersonii. 1½ to 2 ft. A grand hardy perennial for everybody. Big blue spikes. August. 35c each.

V. Incana. Bright silvery foliage, with spikes of amethyst-blue flowers. July and August. One foot high. 30c each; \$2.40 per 10.

VINCA minor. *Periwinkle, or Myrtle.* One of the best evergreen ground covers. Blue flowers. April and May trailing.

HARDY GRASSES

The common striped grass, *Eulalia variegata*, is very attractive and another form in which the bars run crosswise, is *Eulalia zebrina*. Very effective results can be secured from the hardy grasses, coming, as they do, in all forms and kinds of foliage.

Interspersed in the shrubbery or perennial border, they are at home.

Prices on all Grasses: Root-clumps, 6 in. diam., 35c each; extra heavy clumps, 75c each.

EULALIA Japonica. 6 to 8 ft. Rich, green foliage which waves with the slightest breeze.

E. Japonica gracillima univittata. 5 to 7 ft. Narrow-leaved variety of the one above, very graceful and pleasing.

E. Japonica variegata. 4 to 5 ft. Striped with white variegation, forming an attractive plant when grouped with the green.

E. Japonica zebrina. 5 to 7 ft. Barred with bronze-yellow, and very popular, due to the bizarre effect produced.



PATH EDGED WITH CALIFORNIA PRIVET.

BARR'S NURSERY PRODUCTS are the result of every practice that makes for perfect production. The location of our Nurseries in the world's richest agricultural county, its soil and climatic conditions, develop the best in plants, trees and shrubs. Barr's Nursery products are the ultimate.



LATE CRAWFORD.

Fruit Trees

Fruit-growing as an industry has rapidly advanced in recent years; farmers are getting large returns from this source. The man with a small lot and the suburban lot-owner are also interested. Our fruit trees are the best that can be bought from any nurseryman. They are straight trees of moderate size, are guaranteed true to name, and, if given reasonably good care, will thrive.

STANDARD APPLE

We offer the very largest to be had and guarantee them to be entirely free from scale and other diseases.

- Early Strawberry. Very delicious early eating apple.
 - Baldwin. Large, bright red, rich, juicy. Winter.
 - Bellflower. Yellow, crisp, large and juicy. November.
 - Delicious. Large, unevenly shaped. Winter.
 - Duchess of Oldenburg. Medium. Striped red. Sub-acid. Fall.
 - Early Harvest. Small. Straw color. Fine acid. July.
 - Fall Pippin. Large. Yellowish green. Delicious. October.
 - Grimes' Golden Pippin. Medium. Sub-acid. November.
 - Gravenstein. Large. Yellow, striped red. Sub-acid. September.
 - Red Astrachan. Large, crimson. Juicy, acid. July.
 - Rhode Island Greening. Large, yellow-green. Winter.
 - Smokehouse. Medium, red striped. Sub-acid. Winter.
 - Stayman's Winesap. Medium, bright red. Winter.
 - Summer Rambo. Large, yellow; rich and of good flavor. August.
 - Yellow Transparent. Pale yellow. Sub-acid. July.
 - York Imperial. Medium, white, shaded red. Sub-acid. Winter.
- 5 to 6 ft., \$1.50 each; \$12.00 per 10 of one variety.

CRAB-APPLE

Transcendent. Medium, golden yellow, crimson cheek. September. Strong, stocky trees. \$1.50 each; \$12.00 per 10 of one variety.

APRICOT

- Early Golden. Small, pale orange. Juicy and sweet.
- Moorpark. Large, deep orange. Rich. August. \$1.00 each; \$8.00 per 10 of one variety.

SWEET CHERRY

All our Cherries are grafted on Mazzard roots, the only kind suited to our soils.

- Black Tartarian. Very large, purplish-black, rich. June.
 - Governor Wood. Large; yellow, shaded red. June.
 - Napoleon Bigarreau. Large, yellow and red, excellent. July.
 - Rockport. Large, red, pleasant and rich. June.
 - Schmidt's Bigarreau. Large, red, rich and pleasant. July.
 - Windsor. Large, liver-color, rich. July.
 - Yellow Spanish. Very large, yellow, red cheek, sweet. Last of June.
- 5 to 6 ft., \$1.50 each; \$12.00 per 10 of one variety.

SOUR CHERRY

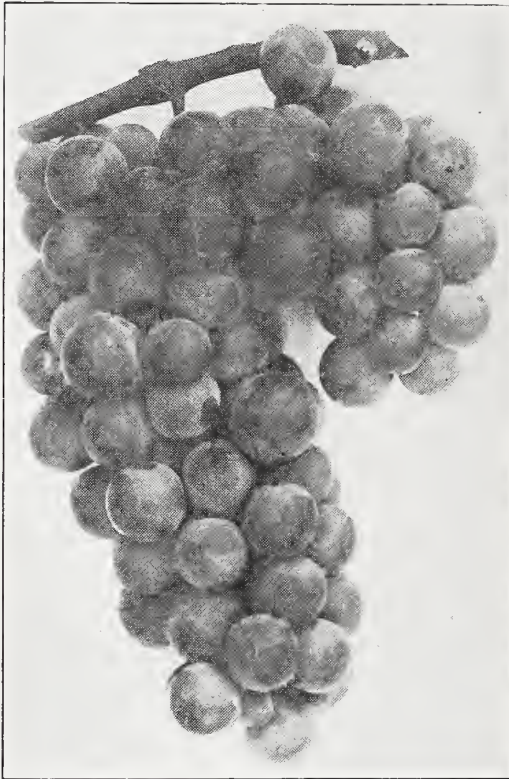
- Early Richmond. Medium, deep red, rich, acid. Middle of June.
 - English Morello. Large, dark red, pleasant, acid. Last of July.
 - Montmorency. Large; bright red; pleasing acid flavor. June.
- 4 to 6 ft., \$1.50 each; \$12.00 per 10 of one variety.

PEACH

Our selection of Peaches is the best that can be made. They are hardy and all freestone varieties.

- Champion. Very large, white, red cheek, delicious. Late September.
 - Crawford Early. Medium; yellow. July.
 - Crawford's Late. Very large, yellow, red cheek. Late September.
 - Elberta. Very large, yellow, red cheek, juicy, rich. Middle of August.
 - Iron Mountain. Large, pure white, solid, juicy. October.
 - Mountain Rose. Medium, white, red cheek, sweet. First of August.
 - Old Mixon. Large, yellowish white, red cheek, pleasant. Middle of September.
 - Stump the World. Very large, creamy white, red cheek, delicious. September.
 - Yellow St. John. Large, yellow, sweet. July.
- \$1.00 each; \$9.00 per 10 of one variety.

Five Plants of one variety at Ten rates.



NIAGARA GRAPES.

STANDARD PEAR

- Bartlett. Large, clear yellow, highly aromatic. September.
 - Buerre d'Clairgeau. Large, russet, with red cheek. October.
 - Duchess d'Angouleme. Large, greenish yellow, juicy. October.
 - Howell. Medium, pale yellow, mildly sub-acid. September.
 - Kieffer. Large, golden yellow, sweet. October.
 - Lawrence. Medium, lemon-yellow, sweet. December.
 - Seckel. Small, yellowish russet, spicy flavor. August to October.
 - Sheldon. Medium, greenish yellow, rich and aromatic. October.
 - Vermont Beauty. Medium, yellow, red cheek, rich. October.
- 4 to 5 ft., \$1.50 each; \$12.00 per 10 of one variety.

PLUM European Varieties.

- German Prune. Large, purple, sweet. September.
- Lombard. Medium, delicate violet, delicious. Aug.
- Reine Claude. Large, green gage, excellent. Late September.
- Yellow Gage. Large, oval, yellow, juicy. Sept. 5 to 6 ft., \$1.00 each; \$9.00 per 10 of one variety.

Japanese Varieties.

- Abundance. Large, cherry-red, sweet. August.
 - Burbank. Large, cherry-red, sweet. Last of Aug.
 - Red June. Large, purple-red. Very early.
- 5 to 6 ft., \$1.00 each; \$9.00 per 10 of one variety.

QUINCE

- Orange. Large, yellow, fine. October. Stocky trees. \$1.50 each; \$12.00 per 10.
 - Muck. Large and prolific. 3 to 4 ft., \$1.10 each; \$10.00 per 10 of one variety.
- Six Plants of the same variety supplied at five times the price of one, where 10 rates are not quoted.

Small Fruits

BLACKBERRY

Wilson's Early. A hardy and productive variety. Fruit large, black and sweet. Good strong canes, \$1.50 per 10 of one variety.

CURRANT

Fay's Prolific. This red has been known for years as a dependable variety. Strong healthy plants, 50c each; \$4.00 per 10 of one variety.

GOOSEBERRY

Columbus. Very large and quite sweet. Approaches the old English varieties in size. \$4.00 per 10 of one variety.

**GRAPE
BLACK.**

- Campbell's Early. One of the largest fruiting Grapes and extremely satisfactory.
 - Concord. The well-known black Grape. Can always be depended on to fruit heavily.
 - Worden. Bunch large and compact. Good large berries and an early fruiting variety.
- Strong two-year vines, 60c each.

RED AND PURPLE.

- Catawba. A very nice berry, having an unusually sweet and aromatic flesh.
 - Delaware. The well-known small, very sweet red Grape. Comes in small bunches.
 - Salem. Berries larger than Catawba, flesh tender, juicy and sweet.
- Strong two-year vines, 60c each.

WHITE.

- Green Mountain. A particularly fine white Grape and not well known as yet.
 - Niagara. This well-known white Grape needs no description. It should be in every collection.
- Strong two-year vines, 60c each.

RASPBERRY

- Columbian. Excellent flavored fruit of large size. A good dark red variety.
 - Cuthbert. Hardy, sweet and productive. Deep crimson.
 - Cumberland. A well-known black-cap. Fruit large and good.
- 20c each; \$1.50 per 10 of one variety.

STRAWBERRIES

The Strawberry will grow in any good garden soil, where the ground has been thoroughly prepared for family use. Plant 1 foot apart in the row, the rows 3 to 4 feet apart.

We list only varieties best suited to the soil in Pennsylvania.

- Wm. Belt
 - Senator Dunlap
 - Haverland
 - Norwood
 - Parson's Beauty
 - Bubach
 - Early Ozark
- \$1.00 per doz. of one variety; \$2.00 per 100 of one variety; \$15.00 per 1,000 of one variety.

EVERBEARING STRAWBERRIES

- Americus.
 - Suburb. Every garden should contain at least 100 plants for family use.
- \$1.50 per doz. of one variety; \$3.00 per 100 of one variety.

ASPARAGUS

Conover's Colossal, and Barr's Mammoth. \$2.00 per 100.

RHUBARB

Stong roots of fine quality. 25c each; \$2.00 per 10 of one variety.



INTERIOR OF OUR FLOWER SALESROOM, 116 N. QUEEN ST.

THE HOME OF FLOWERS

OUR CUT-FLOWER DEPARTMENT

To you who desire fresh cut-flowers, whether it be Roses, Carnations, Violets, Chrysanthemums, etc.: We invite you to our cut-flower store, 116 North Queen Street, which is supplied with fresh flowers daily from our green-houses, overcoming any possible chance that you would receive by mistake stale flowers.

BRIDAL FLOWERS

Attractive bouquets for brides and their attendants are made up in a variety of interesting ways from our great assortment of flowers. Our long experience and our expert artists enable us to put out the newest creations for bridal parties.

PARTY AND RECEPTION FLOWERS

There are experienced clerks in our shop who study the wants of our patrons and the latest modes in flowers and bouquets. Our party bouquets are up-to-the-minute creations in the flower-world. The same attention is given whether the order is large or small.

FLOWERS IN MEMORY

We are prepared to furnish pillows, wreaths, and lodge emblems and designs, for such organizations as Masonic, Odd Fellows, Workmen, etc. We make any desired emblem or spray, on short notice, and guarantee satisfaction. We have on hand at all times a complete stock of wire frames for this work.

SEND A FLOWERGRAM :: SAY IT WITH FLOWERS

Through the Florists' Telegraph Association (a mutual arrangement with the leading florists of the country) we deliver flowers in any town or city in the civilized world, on short notice. Where time will permit, letters can be written with no extra expense to the customer; but where time does not allow that, telegrams will be sent at the expense of the customer. If you wish to surprise and please your friends in distant cities, or on board steamships about to sail, you can rely on us to execute your orders promptly and in the best possible manner.

Prices on reasonable flowers or decorations will be given on application. Where time will not permit of correspondence, kindly state the purpose for which flowers are intended, and the price you wish to pay, and your order will be filled with the best flowers available and in the most satisfactory manner.

Let Us TELEPHONE or TELEGRAPH Your Order and It Will Be Filled ON SHORT NOTICE

Foliage Plants for the House

Physicians prescribe flowers and plants for the sick-room, not alone for the cheering effect they produce, but because they absorb the dry air in our heated homes during the bleak days of winter. Why not then protect our health by the use of growing plants in every home. The more plants we have the better they will thrive, because of the atmosphere containing more moisture, thereby making our home more congenial and a healthier place in which to live.

Their care is a pleasure when one realizes the benefit derived from them. They require repotting only once a year if given a fairly rich loamy soil. This can be done any time during the year, except between September and March, because they are then in a semi-dormant condition, and disturbing their roots will weaken their growth.

Water them when they need it. A safe plan is to submerge the pot in water once a week. Leave them in the water, say five minutes, when you will be sure the soil is thoroughly saturated, after which apply no water until the soil looks dry, then apply enough water to saturate all the soil in the pot. Unless the room is very hot, one or two waterings in addition to the weekly submerging will be a safe plan to go by nine times out of ten. Be sure the drainage is good, and never let your plant stand in water more than ten to thirty minutes at a time.

With plants we can furnish all decorations in vases, boxes, pedestals, jardinières, fancy and ornamental baskets—in fact, everything for the decoration of sun-parlors, piazzas, lawns and interiors of homes or buildings. Our Palms, Ferns, Araucarias, Rubber Plants, etc., are the best. Please inspect our stock, which is choice and large, and gives satisfaction. We pack carefully and ship by express, unless otherwise requested.



BOSTON FERNS.

ARAUCARIA excelsa. *Norfolk Island Pine.* The best of the tender evergreens, admirably suited to house culture, as it is not easily affected by gas or dust. Its deep green, feathery foliage is arranged in whorls, one above the other. \$3.00 to \$4.00 each.

ASPARAGUS plumosus nanus. *Lace Fern.* Very graceful climbing Asparagus, with feathery, bright green foliage. 25c to \$1 each.

A. Sprcngeri. Has coarser foliage than the above, and grows in long, graceful sprays of rich green. An attractive decorative plant, for hanging-baskets, pots or window-boxes. 25c to 50c.

ASPIDISTRA variegata. Foliage striped with white. A superb variegated plant; no two leaves alike. Will stand much neglect and abuse. \$1.50 to \$3 each.

CROTONS. These cannot be excelled for beauty of form and richness of coloring. They are adapted for outside bedding and for interior decorations. We can supply the best varieties. \$1 to \$5 each.

C., Lord Wolseley. Long, narrow, recurving foliage, which colors to a very bright rosy crimson. \$1.00 to \$3.50 each.

DRACÆNA indivisa. Long, slender foliage; much used in vases. Stands full sun exposure and grows vigorously. \$1.00 to \$3.00 each.

D. terminalis. Brilliant crimson foliage, suffused and marked with pink and white. An exceptionally beautiful pot-plant for home adornment. \$1.00 to \$2.00 each.

FERNS, Adiantum Croweanum. The hardiest Maidenhair Fern for home culture. Its attractive, broad leaves and thin, wiry stems create an effect not possible with other Ferns. 25c to \$1.00 each.

F. Cibotium Schiedeii. The most attractive large Fern. It has graceful, drooping light green fronds. The best Tree Fern in cultivation. \$2.50 to \$5 each.

F. Nephrolepis Bostoniensis. *Boston Fern.* An immensely popular plant, on account of its very graceful, robust habit and hardiness. 50c to \$5.



DRACAENA INDIVISA.



KENTIA FOSTERIANA.

F., N. Roosevelt. A new type of the Boston Fern, and is a great favorite. Its fresh, green fronds are very graceful. Compact habit. 50c to \$3.

F., N. Whitmanii. The Ostrich-Plume Fern, has finely divided, feathery fronds. 50c to \$2.50.

Miniature Ferns. We have all the choicest varieties for Fern-dishes, from 2½-inch pots. 15c each, \$1.50 per doz.

Our collection of Ferns is one of the largest in this country, and we can furnish nearly any variety in the various sizes.

PALMS, Kentia Belmoreana. The Kentias are the hardiest Palms for house culture. They will grow where few other plants would live. \$1 to \$10 each. Large specimens in tubs. Prices will be quoted on application.

P. Kentia Forsteriana. Very similar to Belmoreana, but of stronger growth and broader, heavier foliage. \$1 to \$10 each. Large specimens, prices on application.

CHARLES I. LANDIS A. B. HASSLER
 Presiding Judge Additional Law Judge
SECOND JUDICIAL DISTRICT
 Judge's Chambers

Lancaster, Pa., Mar. 1, 1918.

My dear Mr. Barr:—

You request me to give you a testimonial concerning the effectiveness of your work as a gardener and the quality of the stock which you furnish, and I think the best way to do this is to give my own experience.

You will recall that, in 1908 and 1909, the Commission to build the Stevens Industrial School, of which I was chairman, undertook to lay out the ground around it, consisting of eight acres. Mr. Oglesby Paul, of Philadelphia, made the plan, and the next thing which confronted us was to contract with some competent man to carry it out. Fortunately, we not only secured your services, but we also purchased from you our plants. It is needless to say that the work was well done. Any one looking at our beautiful grounds can come to no other conclusion.

I have purchased plants and trees from you since that time, as you know, with similar satisfactory results. I remain,

Very truly yours,
 CHAS. I. LANDIS.

To Messrs. B. F. Barr & Co.
 Lancaster, Pa.

PANDANUS Veitchii. Screw Pine. A very decorative house-plant, with pleasing, gracefully curving leaves, broadly striped with creamy white. Makes a pleasing table decoration when its pot is hidden by vines or other greenery. The Pandanus requires the same treatment as the Dracaena, but is better adapted to house culture than is that plant. \$2.50 to \$5.00 each.

HANGING-BASKETS. A well-filled hanging-basket of ferns and other decorative plants is an attractive adjunct to the living-room. Baskets filled with these grow more beautiful each week, and are more satisfactory than with flowering plants. \$3.00 to \$5.00 each.

Ravine, Pa., Dec. 1, 1920.

B. F. Barr & Co.,
 Lancaster, Pa.

Gentlemen:—

Please find enclosed money order for the amount of \$53.33 for both orders for Privet Hedges—
 First order for 900 being.....\$40 00
 Second order for 300 being..... 13 33

Which makes a total amount for both orders of.....\$53 33

I beg to acknowledge the receipt of shipment in good condition, and also that the Board of Trustees, as well as the other party, were well pleased with the Hedges, and should we ever happen to be in the market for some more we shall be glad to call your attention.

Please acknowledge receipt of, and oblige,

Yours truly,

MR. RICHARD BARR,
 Box 11, Ravine, Pa.



AN EFFECTIVE DECORATION FOR ANY HOME.

ALL PALMS ARE OF HIGH DECORATIVE VALUE. THERE ARE MANY VARIETIES; THEY ARE MAJESTIC, YET GRACEFUL, AND NO OTHER PLANT GIVES THE SAME EFFECT

Barr's Large-Flowered Cannas

No other bedding plant will give such uniform good results in our varied climate. They do well in all sections of the country, and respond quickly to good treatment. For best results a liberal supply of well-decayed manure should be used in preparing the bed, and a liberal supply of water be given them during the season. Set the plants 18 inches apart.

We have an excellent stock of Cannas of the best varieties in 4-in. pots, 12 to 18 inches high, ready to plant, which will save much time for the purchaser. All our Cannas are grown in this way, thus producing an immediate effect.

Where ten rates are not quoted we will supply five plants of the same kind at four times the price of one. This rule applies to any plants or trees listed in this catalog.

Florence Vaughan. Green foliage. Flowers rich golden yellow, thickly spotted with bright red. 3 ft., 25c each, \$2.50 per doz.

King Humbert. In this grand Canna we have a combination of the highest type of flowers with the finest bronze foliage. Its flowers measure 6 inches in diameter, produced in gigantic trusses, a brilliant orange-scarlet with bright red markings; foliage broad and massive, of a rich coppery-bronze. 5 ft., 25c each, \$2.50 per doz.

Mrs. Alfred F. Conard. A most remarkable variety, with exquisite salmon-pink flowers of largest size in erect and abundantly furnished heads, freely produced; 4 ft. 25c each; \$2.50 per doz.

Meteor. A magnificent bedding variety, of strong robust habit, with green foliage and enormous trusses of large, bright blood-red flowers freely produced well above the foliage; 5 ft. 25c each; \$2.50 per doz.

Richard Wallace. Green foliage; canary yellow; large flowers. 4½ ft., 25c each, \$2.50 per doz.

Rosea Gigantea. Large flowers, borne in such abundance that the mass of color on each plant is truly amazing; individual petals are 2½ inches across; a deep, rich rose. 4 to 5 ft., 30c each, \$3.00 per doz.

Uhlberg. Entirely distinct and one of the freest-flowering varieties we have ever grown. The flowers expand very full and are of a soft rosy-carmine; the throat of the flower is of a

creamy-yellow and the edges of the petals, which are slightly crimped, are also pale yellow. 3 ft., 25c each, \$2.50 per doz.



KING HUMBERT.

PLANTING TABLE. The table below shows the number of plants required to fill a circular bed of the dimensions given. In planting begin outside row—where 6 inches apart, 3 inches from edge of bed; where 12 inches apart, 6 inches from edge of bed. It is customary among professionals in planting a bed to set the plants somewhat closer together in the two outer rows, giving more space between each plant towards the center of the bed.

Diameter of bed.	6 in. apart.	12 in. apart.	18 in. apart.	24 in. apart.	30 in. apart.	Diameter of bed.	6 in. apart.	12 in. apart.	18 in. apart.	24 in. apart.	30 in. apart.
3 feet	12	7	12 feet	452	113	50	28	18
4 "	48	12	6	13 "	528	132	59	33	22
5 "	80	20	8	14 "	612	153	68	39	25
6 "	112	28	13	7	...	15 "	704	176	78	44	28
7 "	152	38	17	9	...	16 "	804	201	89	50	32
8 "	200	50	23	12	...	17 "	904	226	100	57	36
9 "	256	65	28	16	...	18 "	1016	254	113	63	40
10 "	320	80	36	20	13	19 "	1132	283	126	71	46
11 "	380	95	42	24	16	20 "	1256	314	139	78	50

NOTE.—A square bed will take about the same number of plants. For an oval bed, add length and breadth and divide by 2. For example, an oval 7 feet long by 5 feet wide will require the same number of plants as a circular bed 6 feet in diameter.

BEDDING PLANTS

We grow only plants of merit, and they are sure to please the purchasers. Our success in growing fine plants is conspicuous, and our product is known throughout Pennsylvania as being the best that can be produced. Varieties marked with a star (*) are especially adapted for bedding purposes. Those marked with two stars (**) are best for borders. All marked with a double dagger (‡) will be in bud or bloom at time of shipping.

ACHYRANTHES.** Red-and-yellow leaves. 3-inch pots. \$1.50 per doz.

AGERATUM, Blue Perfection.* Bright blue. 3-inch pots \$1.50 per doz.

ALTERNANTHERA.** Dainty foliage plant for carpet-bedding. 2½ inch pots, \$1.50 per doz.; \$8.00 per 100.

ALYSSUM, Little Gem.** Dwarf; for edging. \$1.50 doz

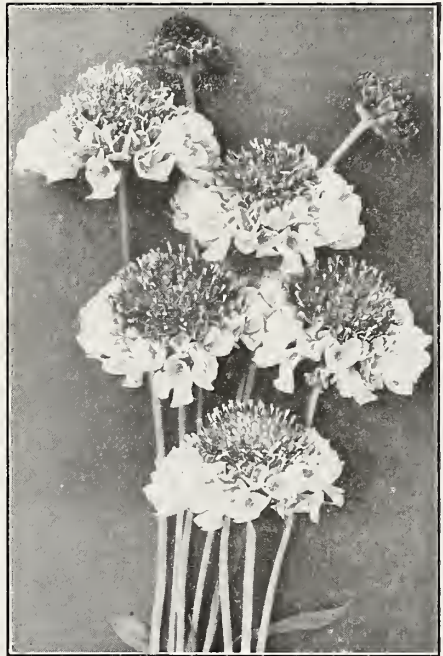
ANTIRRHINUM. Snapdragon.* Pink, white, red, yellow. 3 inch pots, \$1.50 per doz.; \$10.00 per 100.

A ST E R S. One of the most popular flowering plants. Strong seedlings, 35c per doz.; \$2.50 per 100.

BEGONIA, Rex. Begonias are invaluable for house culture; they make excellent plants for baskets or vases. 4 inch pots, 50c each.

B. Gracilis luminosa.* Pink, one of the choicest bedding sorts. 3 in. pots, 35c each; \$3.00 per doz.

B. Gloire de Chatelaine.* A brilliant pink bedding sort. 3 in. pots, 35c each; \$3.00 per doz.



SCABIOSA, MOURNING BRIDE.

B. Vernon.** Flowers beautiful, deep rose. 3 in. pots, 35c each; \$3.00 per doz.

CALADIUM.

Elephant's Ear.*
A fine, subtropical plant. 35c each; \$3.00 per dozen.

COSMOS, Early Dawn.* Large-flowering; very early; lavender. 35c per doz.; \$2.50 per 100.

C. Late-flowering. All colors. 35c each; \$2.50 per 100.

COBÆA scandens. Cup-and-Saucer Vine. Rapid-growing climber. 3½ in. pots, 35c each; \$3.00 per doz.

COLEUS.** Separate or mixed colors. 2½ in. pots. \$1.50 per doz.; \$10.00 per 100.

C. Mammoth-leaved.* 10c each; \$1.00 per doz.

CALENDULA, Orange King. Pot Marigold.* 35c per doz.; \$2.50 per 100.

CARNATIONS.‡ Red, pink and white. 2½ in. pots, \$2.00 per doz.; \$18.00 per 100.

CELOSIA. Cockscomb.* New plumed varieties, 2½ in. pots, \$1.50 per doz.

CELOSIA. Chinese Wool Flower. A novelty of great merit. The plants are literally covered with crimson balls of chenille texture, and commence blooming when quite small, and continue until freezing weather. The first balls remain in good condition the entire season. \$1.50 per doz.; \$10.00 per 100.

CHRYSANTHEMUMS. Our list contains the most improved sorts. See Perennials.



SNAPDRAGON.

DRACÆNA. Good for center of beds or vases 5 in. pots, \$1.50 each; 6 in. pots, \$2.00 each.

ECHEVERIA. *Hen-and-Chickens*** Used for carpet-bedding. \$1.50 per doz., \$12.00 per 100.

FEVERFEW.* Double, white flowers. 4-in. pots 25c each, \$2.50 per doz.

FORGET-ME-NOT.* 3-in. pots, 15c each; \$1.50 per doz.

FUCHSIAS.‡ For window pot-plants or shady spots in the garden. 4 in. pots, 25c each, \$2.50 per doz.

GERANIUMS.‡ Our selection contains the best and latest improved varieties. Red, Pink, and White. 4 in. pots, 25c each, \$2.50 per doz., \$18.00 per 100; 3 in. pots, 15c each, \$1.50 per doz., \$12.00 per 100.

G. Ivy-Leaf.* Desirable for porch- or window-boxes. 4 in. pots, 25c each, \$2.50 per doz.

G. Nutmeg.* Scented foliage. 3-in. pots, 20c each; \$2.00 per doz.

G. Rose, or Sweet-scented. 3-in. pots, 15c each; \$1.50 per doz.

HELIOTROPE.* Small, fragrant, blue flowers in clusters. 25c each, \$2.50 per doz.

IPOMŒA Quamoclit hybrida. Cardinal Climber. A beautiful and brilliant annual climber; strong and rapid grower, attaining a height of 30 ft. or more; fern-like, lacinated foliage; cardinal-red flowers from midsummer till frost. 25c each \$2.00 per doz.

IVY, English. 3 in. pots, 25c each, \$2.50 per doz. Large plants, 4 in. pots, 50c each, \$4.50 per doz.

I. German. Fast-growing; good for baskets. 3½ in. pots, 15c each, \$1.50 per doz.

LANTANA.** Three colors. 3 in. pots, 20c each, \$2.00 per doz.

LOBELIA.** Small, deep blue flowers. 2½ in. pots, 15c each, \$1.50 per doz.

L. Trailing. 2½ in. pots, 15c each, \$1.50 per doz.

LONICERA. Honeysuckle. Fine for boxes or vases. 4 in. pots, 25c each, \$3 per doz.

MARGUERITE DAISY, Queen Alexandra.*‡ White flowers. 4 in. pots, 25c each, \$2.50 per doz.

M. Mrs. F. Sanders.*‡ Double, pure white, 3 in. in diameter. 4 in. pots, 25c each, \$2.50 per doz.

M. Yellow. Paris Daisy.*‡ 4 in. pots, 25c each, \$2.50 per doz.

MOONFLOWER VINE. Ipomœa maxima. Pure white flowers. 4 in. pots, 25c each, \$2.50 per doz.

NASTURTIUM, Dwarf Mixed.* 2½ in. pots, 15c each, \$1.25 per doz., \$9.00 per 100

PANSIES, Mixed.‡** 75c per doz; \$5.00 per 100.

PELARGONIUM. Lady Washington Geranium. 4 in. pots, 25c each, \$2.50 per doz.

PETUNIAS, Single.*‡ Pink and blue. 3½ inch pots, 15c each, \$1.50 per doz.

P. Single, California Giants, Fringed.*‡ Mixed colors. 3½ in. pots, 15c each, \$1.50 per doz.

P. Double.*‡ Fine sorts. 4-in. pots, 25c each; \$2.50 per doz.

RICINUS. Castor Bean. This plant has enormous leaves. 4 in. pots, 15c each, \$1.50 per doz.

SALVIA, Bonfire. Scarlet Sage.* Effective for bedding. 3 in. pots, 15c each, \$1.50 per doz.

SCABIOSA. Mourning Bride.* The beautiful flowers come in all shades, and borne on long stems. 2 in. pots, 75c per doz., \$5.00 per 100.

STOCK, Ten Weeks'. Gilliflower. 3½ in. pots, 20c each, \$2.00 per doz.

TRADESCANTIA. Wandering Jew. Green and variegated. 3 in. pots, 15c each, \$1.50 per doz.

VINCA, Variegated. For vases or for trailing over the edge of window-boxes. 3 in. pots, 20c each, \$2.00 per doz.; 4 in. pots, 30c each, \$3.00 per doz.

VERBENA, Assorted Colors.‡** Fine bloomers. 2½ in. pots, 15c each, \$1.50 per doz., \$3.00 per 100.

V. Lemon. Pale green, fragrant foliage. 4 in. pots, 35c each, \$3.00 per doz.

ZINNIAS.* Popular summer-flowering annuals. Transplanted from flats, 30c per doz.



GERANIUM.

DAHLIAS

Cultural Notes.—Select a well-drained position where the plants will receive the benefit of the sun the greater part of the day. Dahlias are not particular as to soil except that it should not contain too much clay; if such is the case, add coarse sand or coal-ashes.

The planting of dormant bulbs in this vicinity should be about May 15 to 25. Green or growing plants should not be set until after all danger of frost is over, which is about June 1.

CACTUS DAHLIAS

This type of Dahlia is characterized by long, narrow, pointed and twisted petals, giving the layered flower a very striking appearance.

Countess of Lonsdale. Pleasing blending of salmon-pink and amber. Free-bloomer.

General Butler. Rich velvety maroon, white tips.

Kriemhilde. Brilliant pink, shading to white.

Libellule. Sulphur-yellow shaded with capucine-red, free flowering.

Prince of Yellows. Rich canary-yellow.

Any of above varieties, 35c each; \$3.50 per doz.

Kalif. A true majestic flower, frequently measuring 9 in. in diameter; perfect cactus form; in color a pure scarlet. \$1 each.

SHOW DAHLIAS

The following have the large, round, full-flowered characteristics of the Show class. They are either solid colors, edged or tipped lighter or darker.

A. D. Livoni. Fine clear pink; free-flowering and perfect form. 35c each, \$3.50 per doz.



DECORATIVE DAHLIA, A. D. LIVONI.



MRS. CHARLES L. SEYBOLD.

Grand Duke Alexis. Ivory-white; large, massive flower, tinted rose. 35c each, \$3.50 per doz.

Princess Victoria Louise. Pure canary-yellow. 35c each, \$3.50 per doz.

Queen of the Yellows. Clear primrose-yellow; of fine form. 35c each, \$3.50 per doz.

Red Hussar. Brilliant cardinal-red; of perfect form. 35c each, \$3.50 per doz.

Delice. Pleasing pink; profuse bloomer. 35c each.

DECORATIVE DAHLIAS

This class comprises those that depart from the formal rounded type of the Show class.

C. W. Bruton. Bright yellow; one of the best. 35c each, \$3.50 per doz.

Jack Rose. Brilliant crimson-red. 35c each; \$3.50 per doz.

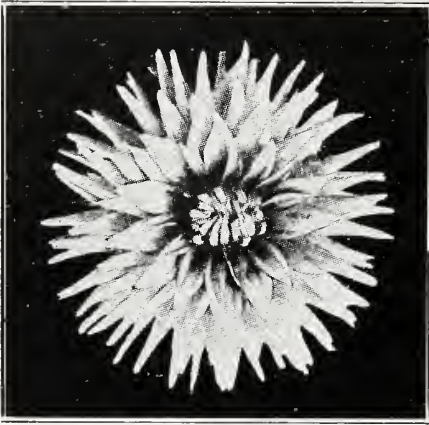
Mme. Van den Dael. Soft rose center, shading to white. 35c each, \$3.50 per doz.

Perle. *Perle de la Tete d'Or.* Glistening pure white; fine for cut-flowers. 35c each, \$3.50 doz.

Souvenir de Gustave Doazon. Brilliant orange-scarlet; free-bloomer; very large. 35c each, \$3.50 per doz.

Sylvia. Soft pink center, shading to white; fine for cutting. 35c each, \$3.50 per doz.

Golden West. Large, bright canary - yellow blooms. 50c each; \$5.00 per doz.



COUNTESS OF LONSDALE.

NEW CENTURY SINGLE DAHLIAS

These are of the free-branching habit, flowering early and profusely throughout the season. Flowers 4 to 6 ins. across, on long stems.

Crimson Century. Rich, velvety crimson.

Scarlet Century. Brilliant scarlet.

Twentieth Century. Rosy crimson; the flowers change lighter as the season advances.

White Century. Pure white, with large petals.

Price of above Single Dahlias, 35c each; \$3.50 per doz.

PEONY FLOWERING DAHLIAS

Mrs. Charles L. Seybold. Bright pink, each petal tipped white. One of the best early varieties for cut flowers. 35c each, \$3.50 per doz.

DAHLIAS IN FINE MIXTURE

Comprising many of the very best varieties. 20c each, \$2.00 per doz., \$15.00 per 100.

QUALITY GLADIOLI

The Gladiolus prefers a well-drained sandy loam, but it will succeed in heavier soil. For the best results the ground should be well fertilized with stable manure, turned under the previous fall and a little more manure worked into the soil the following spring. Planting can be commenced in April and, to insure a succession of bloom, make more plantings every ten days or two weeks until July 1. Use large bulbs, setting them 4 ins. deep; if smaller bulbs are used, 3 ins. is deep enough, 6 ins. apart.

NEW AND RARE SORTS

America. Soft flesh-pink; in coloring and makeup resembling the orchid; one of the best for cutting or bedding; strong grower.

Baron Hulot. Deep violet-blue; well-opened flowers \$1.00 per doz.

Brenchleyensis. The most effective scarlet for massing \$1.00 per doz.

Empress of India. A rich, dark red; one of the best of recent novelties.

Glory of Holland. White, with slight tinting of pale pink; anthers of delicate lavender. Blossoms large.

Halley. Early-blooming; large, well-opened flowers of delicate salmon-pink.

Mrs. Francis King. A striking shade of light scarlet or flame-color; effective both in the border or when cut

Niagara. A light crocus-yellow, throat shaded deeper. Large, open flowers on a strong spike. For color, texture and keeping qualities this is one of the best.

Panama. This new pink has created a sensation on account of its large wide-open wax-like mauve-rose flowers

Willy Wigman. Large, wide-open flower. A beautiful blush-tint, with long, bright tulip blotch on lower petals. One of the most attractive Gladioli on the market

Prices of Above Varieties:

Mammoth size bulbs—\$1.50 per doz., \$10.00 per 100.

Second size bulbs—75c per doz., \$5.50 per 100.

Not less than five of one variety sold at dozen rate, or 25 at 100 rate.

Mrs. Frank Pendleton. Lovely salmon-pink with brilliant deep red blotches in the throat. Exquisite in every way

First size bulbs—\$1.75 per doz., \$11.00 per 100.

Second size bulbs—\$1.10 per doz., \$7.00 per 100.

Schwabe. Pure canary yellow, shading to soft yellow. Produces a very strong stem and productive.

First size bulbs—\$2.10 per doz., \$13.00 per 100.

Second size bulbs—\$1.50 per doz., \$10.00 per 100.

STANDARD MIXTURE

Contains good varieties of all colors, and will give general satisfaction.

First size bulbs—75c per doz., \$5.00 per 100.

Second size bulbs—50c per doz., \$3.00 per 100.



AMERICA, GLADIOLI.
One of the Best for General Planting.



A BEAUTIFUL TURF CAN BE MAINTAINED IN FULL SUN OR UNDER TREES
WHEN BARR'S SPECIAL BRAND SEED IS USED.

Barr's Special Grass Seed

An attractive lawn adds greatly to the charm of one's home. Whether it be large or small, that lawn should be the best. It must not show bare places and weedy patches. It should be one solid mass of the same tone of green.

To get such a result, good deep well prepared is a very necessary foundation. Plant-food must be available in large quantities and the soil must be sweet; sour soil will not grow a good blue grass sod. Too much shade is harmful, but this can be overcome to some extent by using the proper mixtures. "Fall grass" is a great pest. It can be held in check, however, by keeping it so closely cut that it will not go to seed. Then in the fall, when the frost has killed it, rake out the dead plants, stir the soil a little, and sow in some good grass seed.

BARR'S SPECIAL GRASS SEED MIXTURE.

The kind to use is the great question. There are on the market mixtures and blends described in formulas with fancy adjectives, which will give various results according to what they contain. If you select *Barr's Grass Mixture*, you will get results. It is an honest, dependable mixture, suitable to a wide variety of situations.

Barr's Special NEVER DIE Grass Seed is a combination of the best grasses, adapted to our soil and climate, and mixed in such proportion as to give the best results. *Barr's Grass Seed Mixture* is the successful outcome of these ex-

periments. When it is only a small bare spot, scratch it up with an iron-toothed rake, scatter an abundance of seed and roll it in. 1 qt., 30c; 1 bus. (20 lbs.), \$6.00. One quart will sow 300 sq. ft.; 5 to 6 bushels to the acre.

BARR'S SHADY LAWN GRASS SEED. Why not get as good results in the shaded places as in the open? Kentucky Blue Grass will not make a sod there, but **Barr's Shady Lawn Grass Seed** will succeed in just such situations and give you as satisfactory results in shaded places as **Barr's Grass Seed Mixture** will in the open. 1 qt., 40c; 1 bus. (20 lbs.), \$7.00.

EVERY LAWN NEEDS FEEDING

"A stitch in time saves nine" is true of the lawn as of other things. Do not wait until the lawn has a "run-down-at-the-heel" appearance; feed it regularly and liberally, and have a good lawn all the time. We have in stock high-grade fertilizers for feeding lawns. All the leading brands worth while we can supply.

BARR'S CANADIAN WOOD-ASHES. Good lawn grasses will not succeed in sour soil. Wood-ashes correct that. We have as good unleached Wood-ashes as money can buy. If bone meal has been sown in the land, do not use the Wood-ashes for three or four weeks. 50 lbs., \$1.50; 100 lbs., \$2.75; 1 bbl. (200 lbs.), \$5.50. We can quote very low prices on carload lots. One pound will sow 10 sq. ft., 1½ to 2 tons to the acre.

BARR'S PURE BONE MEAL. By its odor shall ye know it, but do not let its fragrance prevent you from using our Bone Meal. The undesirable odor will soon disappear after the Bone Meal has been spread upon the lawn. This, together with the wood-ashes, should result in giving you a very attractive lawn. 25 lbs., \$1.25; 50 lbs., \$2.25; 100 lbs., \$4.25. One pound will sow 10 sq. ft.; 1½ to 2 tons to the acre.

BARR'S HUMUS. Nature's plant food. Used as a top dressing, or mixed with the soil when making Rhododendron or Azalea bed. 100 lbs., \$2.00; 500 lbs., \$9.00.

BARR'S LIME, Hydrated. For lawn and field use where the ground has become sour. 100 lbs., \$1.75.

BARR'S SHEEP MANURE, Pulverized. A pure natural manure, for lawns, potting soil, general vegetable and flower garden, where quick as well as lasting results are wanted. 5 lbs., 35c; 10 lbs., 60c; 25 lbs., \$1.00; 50 lbs., \$1.75; 100 lbs., \$3.25; 500 lbs., \$15.00.

Barr's Flower Seeds

A LIBERAL SOWING OF THESE TO INSURE ABUNDANCE OF BLOOM ALL SUMMER

We list only the most popular sorts, and varieties that are not difficult to grow.

Any mellow soil will grow beautiful flowers from seed. Exercise care that the seeds are not covered deeper than the seeds themselves. Cover the ground with paper during the day until the plants come up, and be careful the ground does not become dry while the seeds are germinating, or while the plants are small. The soil should be kept moist, not wet.

Do not allow plants to stand too thickly; transplant, if necessary. If crowded they cannot grow or bloom satisfactorily.

Plant seeds outdoors about the time the fruit trees are coming into bloom. By starting tender seeds indoors, in window-boxes, hotbeds, or cold-frames and by transplanting, you can have your plants earlier. Sweet Peas should be planted on or about St. Patrick's Day for best results.

ANNUALS

Those that bloom and die the first year from seed. Per pkt.

Ageratum, Blue.....	5c
Alyssum, Little Gem.....	5c
Asters, four varieties, separate colors....	5c
Calendula, assorted colors.....	5c
California Poppy, assorted colors.....	5c
Castor Beans.....	5c
Chinese Woolflower, assorted colors.....	5c
Cockscomb, assorted colors.....	5c
Coleus Mixed, assorted colors.....	5c
Cornflower, Blue.....	5c
Cosmos Mixed, Early.....	5c
Dusty Miller.....	10c
Strawflowers.....	5c
Marigold, Tall, Mixed.....	5c
Marigold, Dwarf, Mixed.....	5c
Mignonette.....	5c
Nasturtiums, Dwarf, Mixed.....	5c
Nasturtiums, Tall, Mixed.....	5c
Pansies, Mixed.....	5c
Petunia, Rosy Morn.....	5c
Petunia, California Giants.....	10c
Portulaca.....	5c
Red Sunflower.....	5c
Scabiosa, Mixed.....	5c
Snapdragons.....	5c
Stocks, Mixed.....	5c
Sweet Peas, Orchid - Flowering—Best garden varieties—Red, White, Blue, Lavender and Pink. Each.....	10c
Sweet Peas, Orchid-Flowering, Mixed.....	10c
Verbenas.....	10c
Wallflower, Annual.....	5c
Zinnias, Mixed.....	5c



SWEET PEAS.

PERENNIALS

Continue to bloom for several years. Seldom flower the first summer, except a few varieties.

	Per pkt.
Columbine, Mixed.....	10c
Coreopsis, Grandiflora.....	10c
Canterbury Bells.....	10c
Foxgloves, Mixed.....	10c
Hollyhocks, Mixed.....	10c
Larkspur, Mixed.....	10c
Lychnis, Mixed.....	10c
Mallows, Mixed.....	10c
Penstemon, Mixed.....	10c
Platycodum.....	10c
Shasta Daisy.....	10c
Sweet William.....	10c

All seeds prepaid, Parcel Post, at price quoted.

BLACK LEAF 40.

A concentrated solution of Nicotine Sulphate. An excellent spray for aphid and sucking insects of all kinds. Full directions on each package. 10-oz. bottle, 40c; \$1.50 per ½ lb; \$2.50 per lb.

SULPHO - TOBACCO SOAP

Will rid plants and animals of all kinds of injurious insects, cheaply and effectively. Directions for use on every package. 3-oz. cake, makes 1½ gallons prepared solution, 10c each; 8-oz. cake, makes 4 gallons prepared solution, 25c each, postpaid.

ANT DESTROYER

Rid your lawns and tennis-courts of ants. Usually only three applications are necessary. Price, 30c per ¼ lb.; \$1.00 per lb., postpaid; or by express, collect, in 5-lb. cans, 75c per lb.

INDEX

Page		Page		Page	
Abelia	21	Clematis	34	Hemerocallis	40
Abies	21	Clethra	12	Hen-and-Chickens	56
Acacia, Rose	17	Cobaea	55	Heuchera	40
Acanthopanax	11	Cockscomb	55	Hibiscus	14, 40
Acer	3-4	Coleus	55	Hollyhock	40
Achillea	36	Columbine	36	Honeysuckle	15, 35, 56
Achyranthes	55	Convallaria	39	Horse-Chestnut	4
Adum's Needle	22	Corechorus	15	Hydrangea	15
Aesculus	4	Coreopsis	39	Hypericum Aurea	15
Ageratum	37, 55	Cornflower	38	Indigo, False	37
Agrostemma	36	Cornus	12	Insecticides	60
Almond, Flowering	11	Corylus	2	Ipomoea	56
Alternanthera	55	Cosmos	55	Iris	41
Althaea	14	Cotoneaster	22	Ivy	56
Alum Root	40	Crab-Apple	8, 49	Juniper	24
Alyssum	36, 55	Crataegus	13	Kalmia Latifolia	22
Ampelopsis	34	Crotons	52	Katsura Tree	6
Amygdalus	11	Cryptomeria	24	Kentucky Coffee Tree	5
Anchusa	36	Cup-and-Saucer	37	Keira	12, 15
Andromeda Catesbaei	21	Currant	50	Kudzu Vine, Japanese	35
Anemone	36	Cut-Flower Dept.	51	Lantana	56
Antirrhinum	55	Cydonia	12	Larix	6
Apple	49	Cypress	9-27	Larch, European	6
Apricot	49	Dahlia	57	Larkspur	39
Aquilegia	36	Daisy	47, 56	Lavandula	42
Arabis	36	Deciduous Trees	3	Lavender	40
Aralia	11	Decorative Plants	52	Lawn Grass, Mixtures	59
Araucaria	52	Delphinium	39	Leopard's Bane	21
Arborvitae	28	Delutzia	13	Lencothoe	39
Aristolochia	34	Dianthus	39	Ligustrum	15
Aronia	11	Dicentra	39	Lilac	19
Artemisia	37	Dietamnus	39	Lilium	42
Asclepias	37	Diervilla	20	Lily	49
Ash	4-9	Digitalis	12	Lily-of-the-Valley	39
Asparagus	50	Dogwood	6, 12	Linden	9
Asparagus, Ornamental	52	Dolichos	35	Liquidamber	6
Aspidistra	52	Doronicum	39	Liriodendron	6
Aster	37, 55	Dracaena	52, 56	Live-forever	47
Azalea	11, 21	Drumman's Pipe	34	LOBELIA	42, 56
Baby's Breath	40	Echeveria	56	Lonicera	15, 35, 56
Baptisia	37	Elaeagnus	14	Lupine	42
Barberry	11	Elephant's Ear	55	Lupinus	42
Beard Tongue	46	Elm	10	Lychnis	42
Bedding Plants	55	Eulia	48	Lycium	35
Beech	5	Euonymus	13, 35	Lythrum	42
Begonia	55	Evergreens, Coniferous	23	Magnolia	6
Bellflower	37	Evergreen Shrubs, Broad-leave	21	Mahonia	22
Berberis	11	Exochorda	13	Maidenhair Tree	6
Bergamot	42	Fagus	5	Mallow	40
Betula	5	Ferns	59	Maple	3-4
Bignonia	34	Fertilizers	59	Matrimony Vine	35
Biotas	24	Feverfew	47	Mock Orange	16
Birch	5	Fir	24	Monarda	42
Bittersweet	34	Flag	41	Moonflower Vine	56
Blackberry	50	Fleur-de-Lis	41	Morus	56
Black-eyed Susan	47	Flower Seeds	60	Mountain Laurel	22
Blanket Flower	39	Forget-me-not	56	Mourning Bride	56
Bleeding-Heart	39	Forsythia	14	Mulberry	7
Bocconia	37	Foxglove	39	Myosotis	42
Boltonia	37	Fraxinus	4	Myrtle	48
Box	21	Fringe White	12	Nasturtium	56
Bridal Wreath	18	Fruit Trees	49	Nine-bark	17
Buddleia	11	Fuchsias	56	Nyssa	7
Burning Bush	13	Gaillardia	39	Oak	8
Butterfly Plant	11	Gas Plant	39	Obedient Plant	47
Boxus	21	General Directions, 2d Cover		Oleaster	14
Caladium	55	Geranium	56	Ornamental Shrubs	11
Calendula	55	Gilliflower	56	Ox-Eye	40
Callicarpa	13	Glabadioli	58	Pachysandra Terminalis	22
Calycanthus	11	Globe Flower	48	Palms	53
Campanula	37	Golden Bell	14	Pandanus	53
Cannas	54	Golden Glow	47	Pansies	56
Canterbury Bell	37	Gooseberry	50	Papaver	46
Cardinal Flower	42	Grape	50	Peach	49
Carnations	55	Grasses, Hardy	48	Pear	50
Caryopteris	12	Gum, Sweet	6	Pearl Bush	13
Castor Bean	56	Gum, Sour	7	Pelargonium	56
Catalpa	5	Gymnocladus	5	Pentstemon	46
Cedar	27	Gypsophila	40	Paenony	43-45
Celastrus	34	Hardy Garden Flowers	36	Perennials, Herbaceous	36
Celosia	55	Hazel	12	Persimmon	6
Centauria	38	Hedera	35	Persiwinkle	48
Cerastium	38	Helanium	40	Petunias	56
Cercis	12	Helianthus	40	Philadelphus	16
Chelone	38	Heliospis	40	Physostegia	47
Cherry	49	Heliotrope	56	Plox	46
Chinese Cdrel	5			Picea	25
Chinese Wool Flower	55			Pine	26, 52
Chionanthus	12			Pink, Scotch	39
Chrysanthemum	38, 55			Pinus	26
Circidiphyllum	6			Plane	7
				Planting Table	54
				Platanus	7
				Platycodon	47
				Plum	50
				Plum, Flowering	7
				Poplar	7
				Poppy	37
				Potentilla	16
				Primrose	47
				Primula	47
				Privet	15
				Purpurea	13
				Pyrethrum	47
				Quercus	8
				Quince	50
				Raspberry	50
				Red-Bud	5, 18
				Red-hot Poker	48
				Retinispora	27
				Rhododendron	22
				Rhodotypos	56
				Rhubarb	50
				Rhus	16
				Ribes	17
				Ricinus	56
				Robinia	17
				Rosa	17
				Rose	30, 33
				Rose of Sharon	14
				Rubus	17
				Rudbeckia	47
				Salvia	47, 56
				Salis	8
				Sambucus	18
				Scabiosa	56
				Sedum	47
				Small Fruits	50
				Smoke Bush	16
				Snapdragon	55
				Snowball	20
				Snowberry	18
				Snowdrop Tree	19
				Special Offers	19
				Spirea	17, 48
				Spruce	25
				Starwort	37
				Stephanandra	18
				Stock	56
				Strawberries	50
				Storax	18
				Styrax	18
				Sunflower	40
				Sweet Pepper Bush	12
				Sweet Shrub	11
				Sweet William	18
				Symphoricarpos	18
				Syringa	19
				Tamarisk	20
				Tamarix	20
				Taxus	28
				Taxodium	9
				Thermopsis	48
				Thorn	13
				Thuya	28
				Tilia	9
				Tradescantia	56
				Tritoma	48
				Trollius	48
				Trumpet Vine	34
				Tsuga	29
				Tulip Tree	6
				Turtlehead	38
				Ulmus	10
				Valeriana	48
				Varnish Tree	6
				Verbena	56
				Verbena Shrub, Blue	48
				Veronica	48
				Viburnum	20
				Vinca	48, 56
				Vines and Climbers	34
				Virginia Creeper	34
				Walnut	6
				Wandering Jew	56
				Weigela	20
				Willow	8
				Windflower	36
				Wistaria	35
				Yew	28
				Yuca	22
				Zinnias	56



KEYSTONE
NURSERIES